

# THE 5TH VIRTUAL DESIGN WORLD CUP Theme 2015“Redevelopment of Keelung Station Area”

## Keelung Station And Keelung Pier

### Introduction

- The Keelung Station and Keelung Pier is a planning concept of the redevelopment of the original station area which can meet increasing need for tourists and locals day by day.The plan of redevelopment will be wished to improve the crowded situation, provide a new, convenient, healthy style of life for them and make tourists from all over the world home.
- The Keelung Station concept will ensure to meet every need in transportation, food, accommodation, entertainment and other services for tourists and locals, which will value the city environment and promote the local tourism development.
- The Keelung Pier concept aims to attach convenience to the transportations, which connects with the Keelung Station for passengers who can transfer other transportations in a few minutes. At the same time, the plan also put the region's long-term development into thought. It balances the cost performance in all aspects (such as ecological, convenient sense and so on) in KEELUNG region.



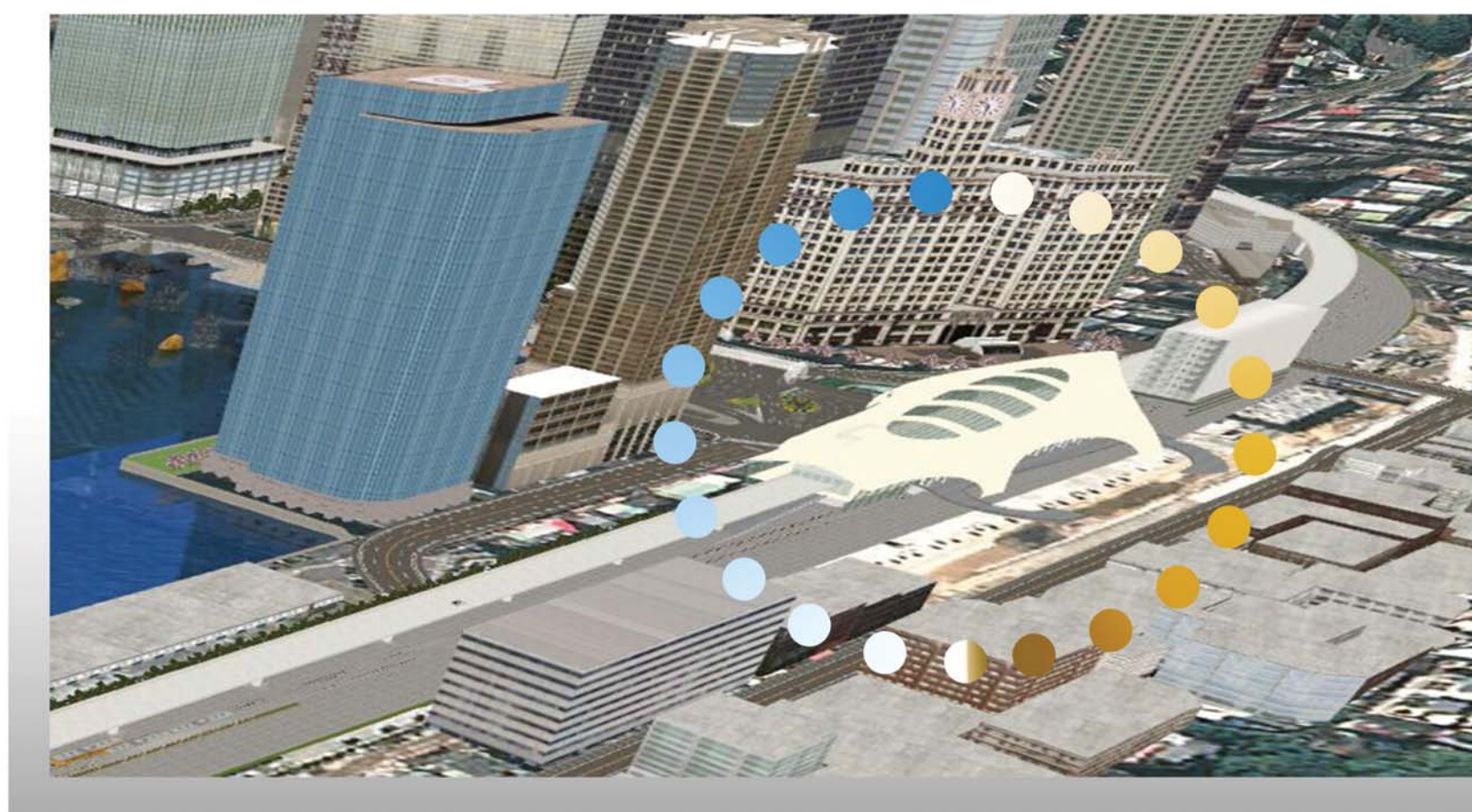
### DESIGN CONCEPT



• Currently Keelung region is close to Taipei. During the day-time, tourists and locals often travel to Keelung Harbour. Compared the original region, the new plan concept aims to improve the convenience which could provide for them.

• The new region can hold more and more increasing crowds. The redevelopment of Keelung region is the most important point, which we put into consideration. At the same time, we should redefine the station. As followed, the requirements were written down.

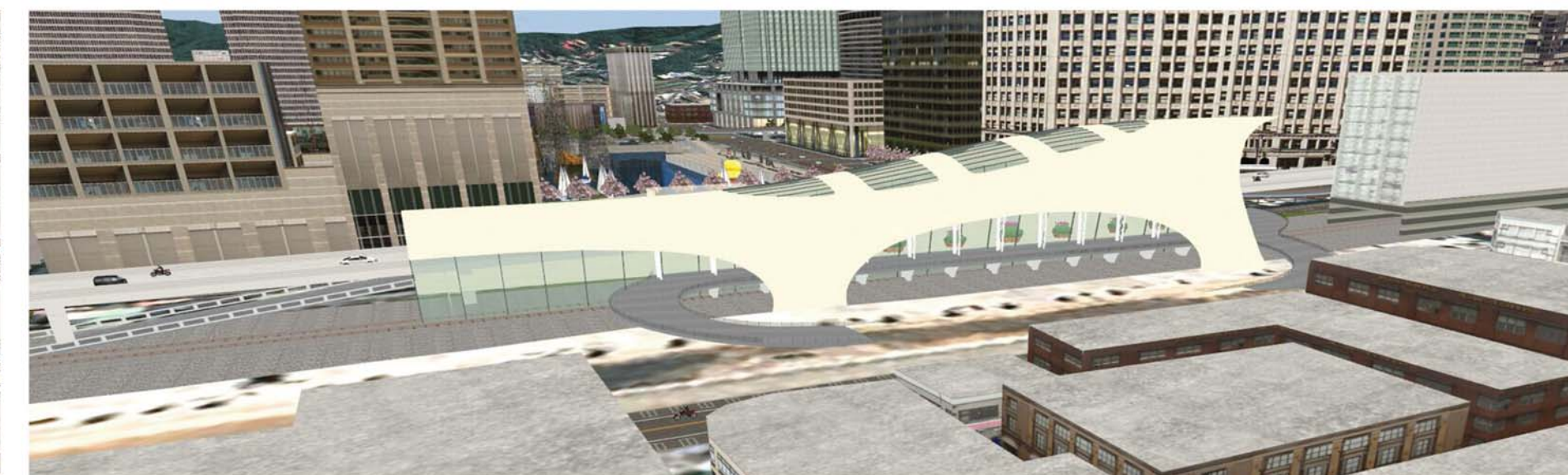
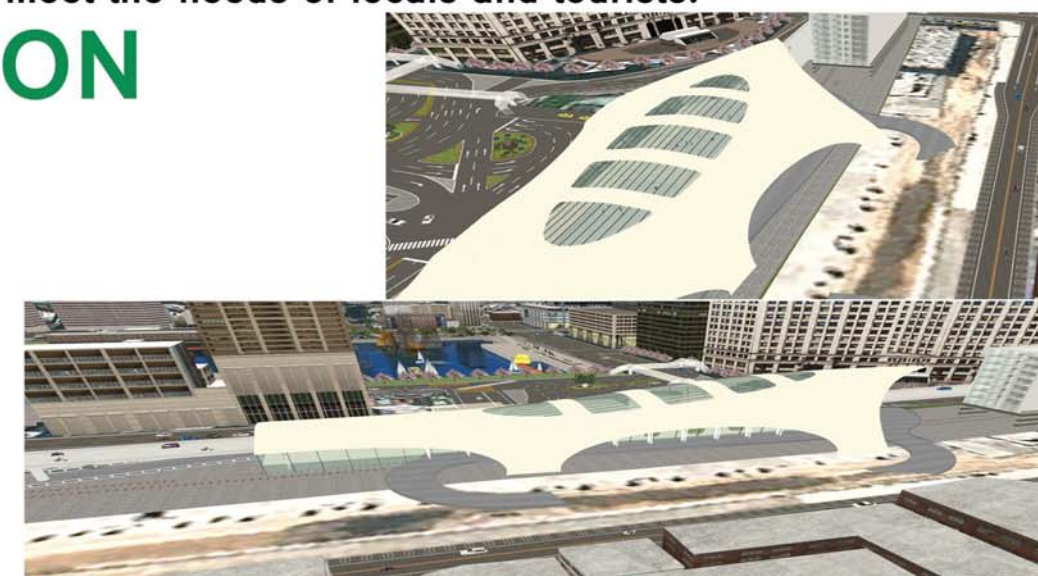
- The surface appearance must be modern, suit the redevelopment plan of the Keelung region.
- Live up to the high standard of the harbours all over the world, build a high-level harbour.
- Advocate the Eco-environment idea to the world, build a structure which is environmentally friendly.
- The new station must be large enough to hold more and more crowds in future.



### IMAGE AND DESIGN

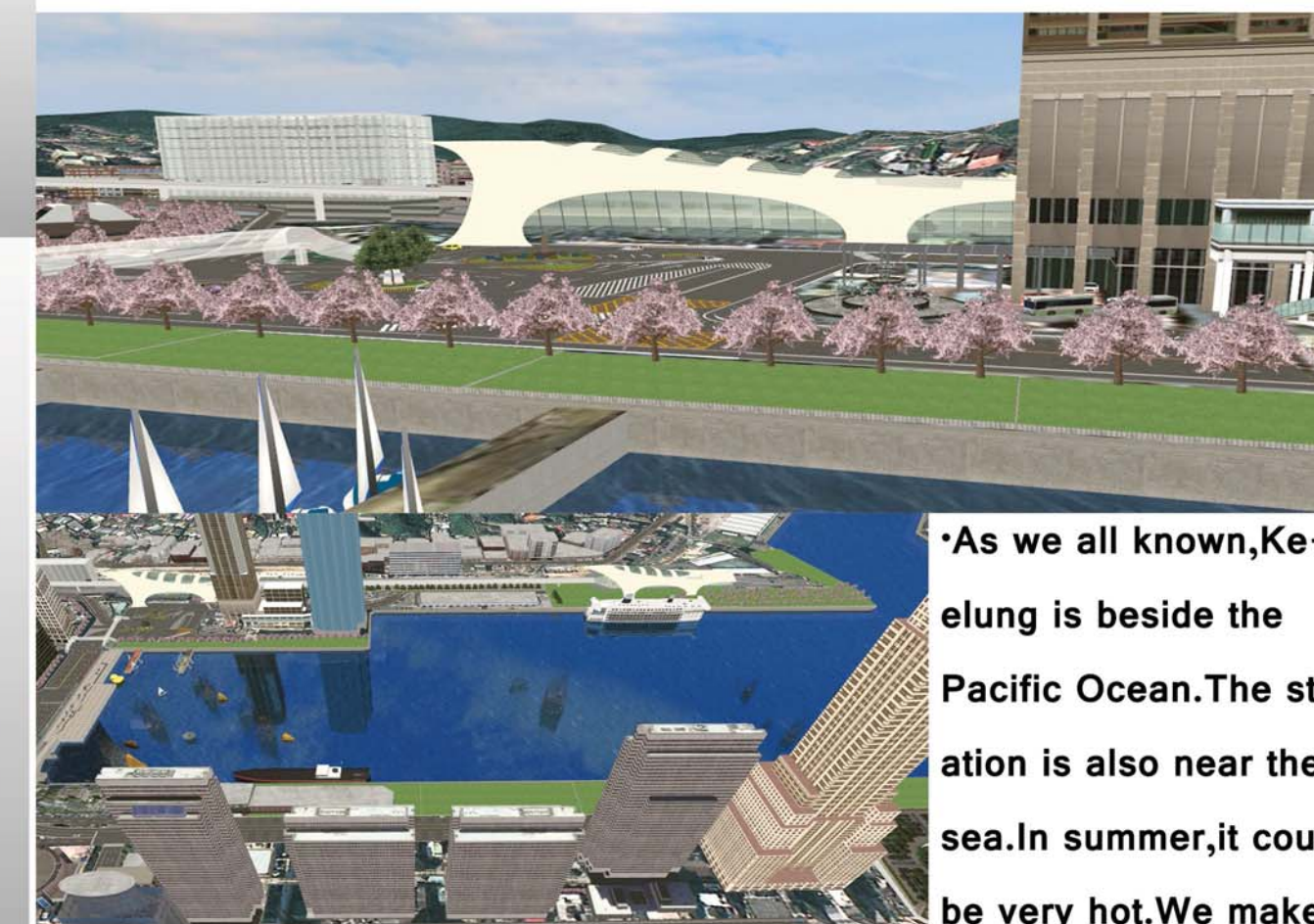
• Keelung station is built in the center of the city. It's necessary to avoid traffic chaos and provide essential convenience to users. We built a viaduct which crosses the structures to connect the station, the pier and other places for balancing the passenger volume rapidly. To suit the Keelung's appearance (a traditional harbour city), the structures were designed into the image of a couple of golden whales. The whales are waiting and in line, gazing at the faraway horizon. The reason of choosing this region is that there are increasing crowds there in future. The entertainment malls and shopping centers in that region can meet the needs of locals and tourists.

### KEELUNG STATION & VIADUCT KEELUNG PIER



### ECHO-DESIGN

• For the sake of reduction of the electricity application amount, the lights must be saved. Finally we choose the glass and white walls to build the station. Due to reduction of the electricity application amount, the carbon dioxide emissions will be reduced. The lights in the station also use ecological materials such as LED lighting. The roof of the station is designed for collection of the rain which will be used to wash the toilets or other things.



the water indraft into the tube underground for the sake of reduction of the temperature. Owing the watercooling system, the usage of air-conditioners will also be reduced. In hot summer, the temperature will also be control under 30°C due to the watercooling system.

• Besides the station, many plants were grown. Plants can absorb the carbon dioxide. And transform into new oxygen. At the same time, the plants can also bring the great view to people.

• Near the harbour beside the Pacific Ocean, the viaduct which crosses the station and harbour, the transportation was turned into by bike or on foot. Every tourist and local will be convenient, and more environmentally friendly.

WATERCOOLING SYSTEM INTO PLANTS OXYGEN

