

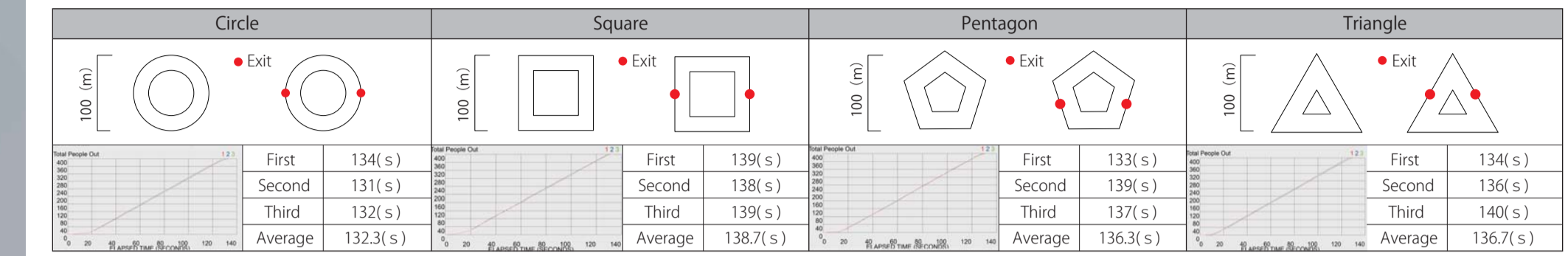
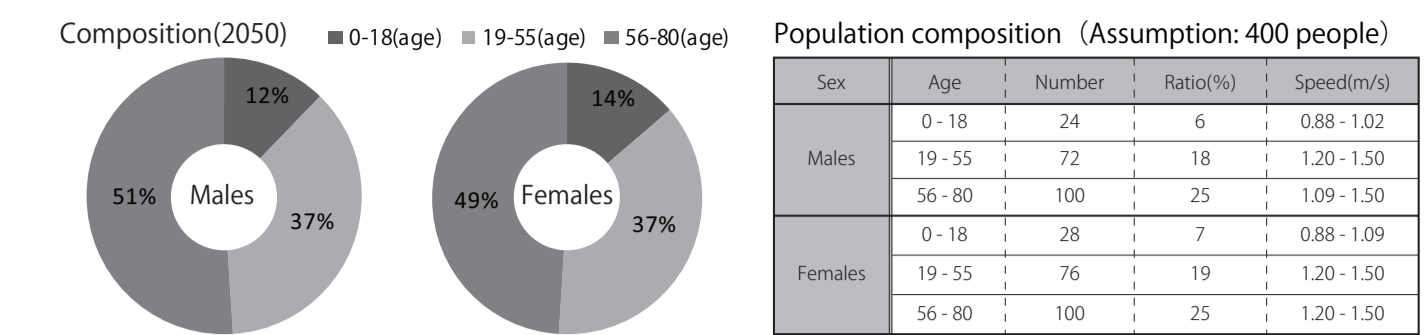
# Noah's Ark - Tokyo 2050 -

## 8. Form generation using analysis tools

Various factors which affect NA are analyzed. An analysis result is used as a parameter which forms a city. By this proposal, the simulation of the motion of a wind, light, and a person is carried out using analysis tools.

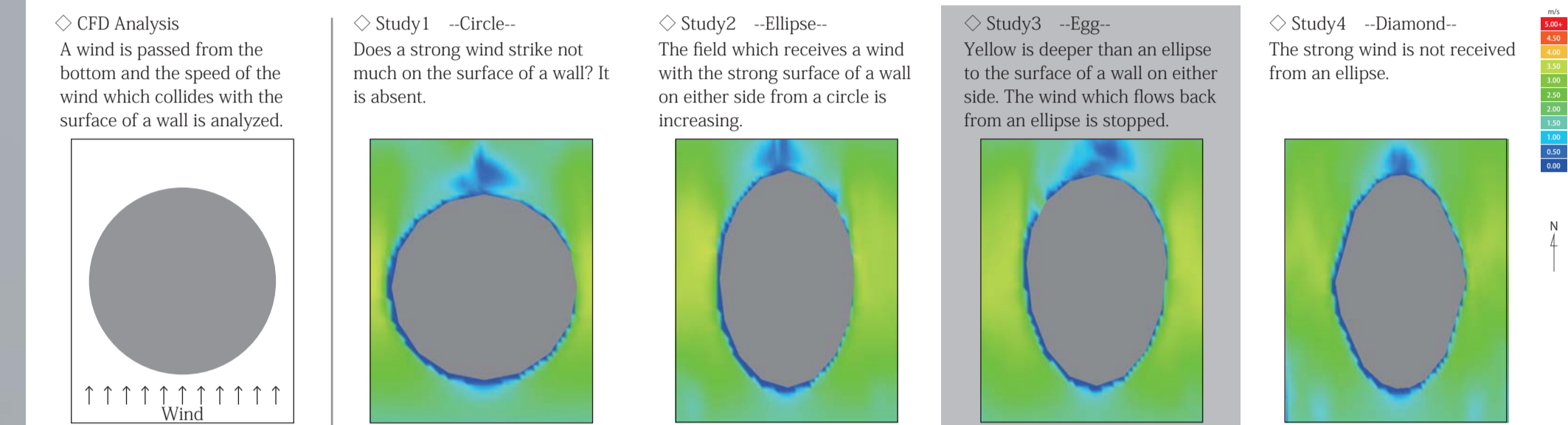
### > Human activity (Refuge)

We assumed 2050 and thought about constitution of the population. In composition, we become a right figure supposing a population of 400. In addition, I analyzed the refuge of the person for various forms at an initial stage.



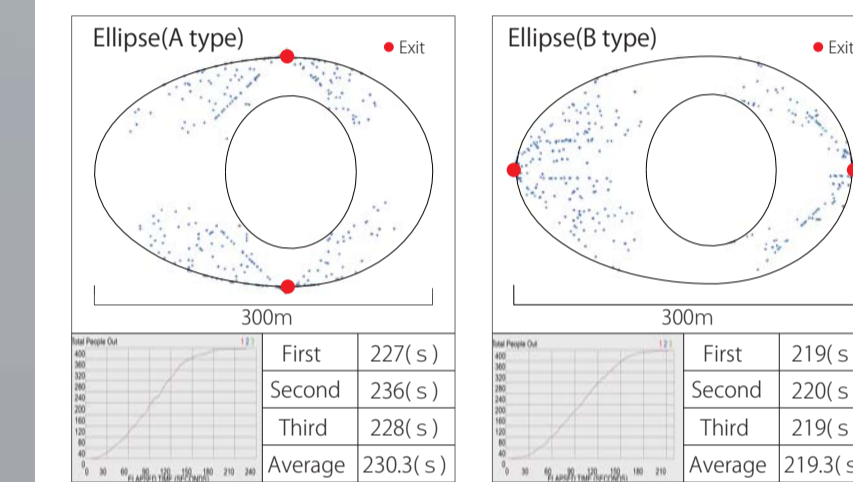
### > Wind direction

To visualize the flow of the wind. Consider the optimal round from various cases.



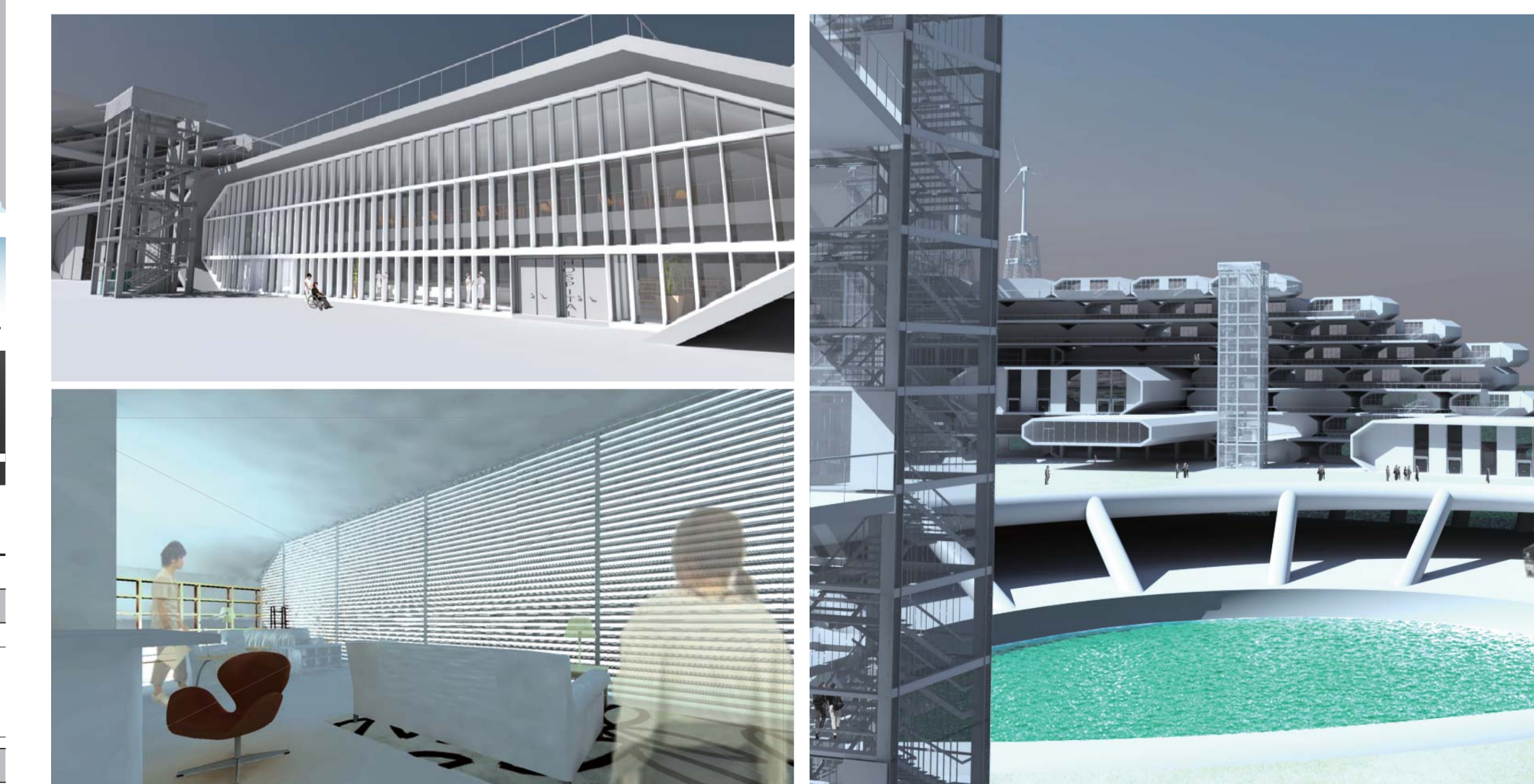
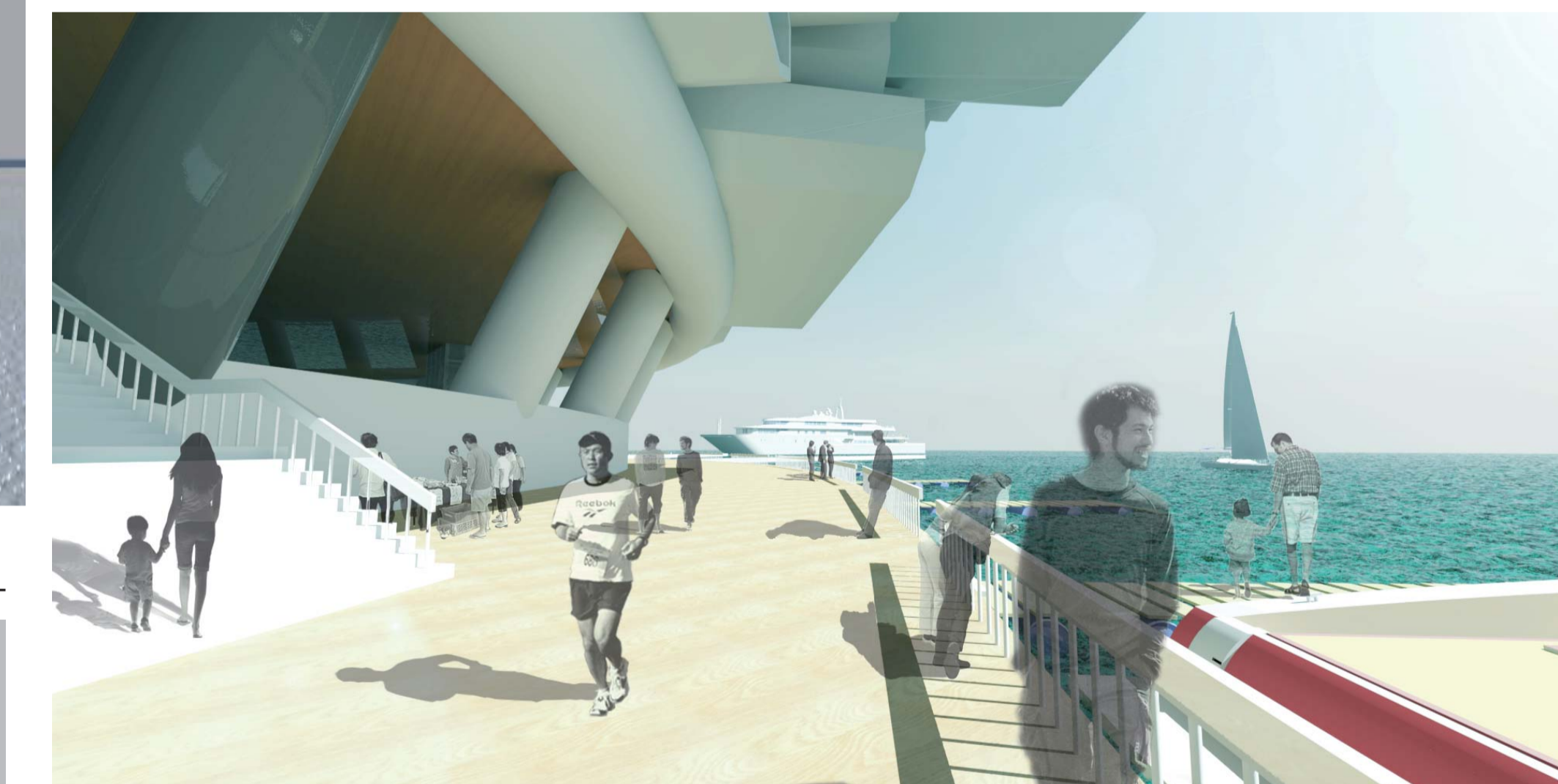
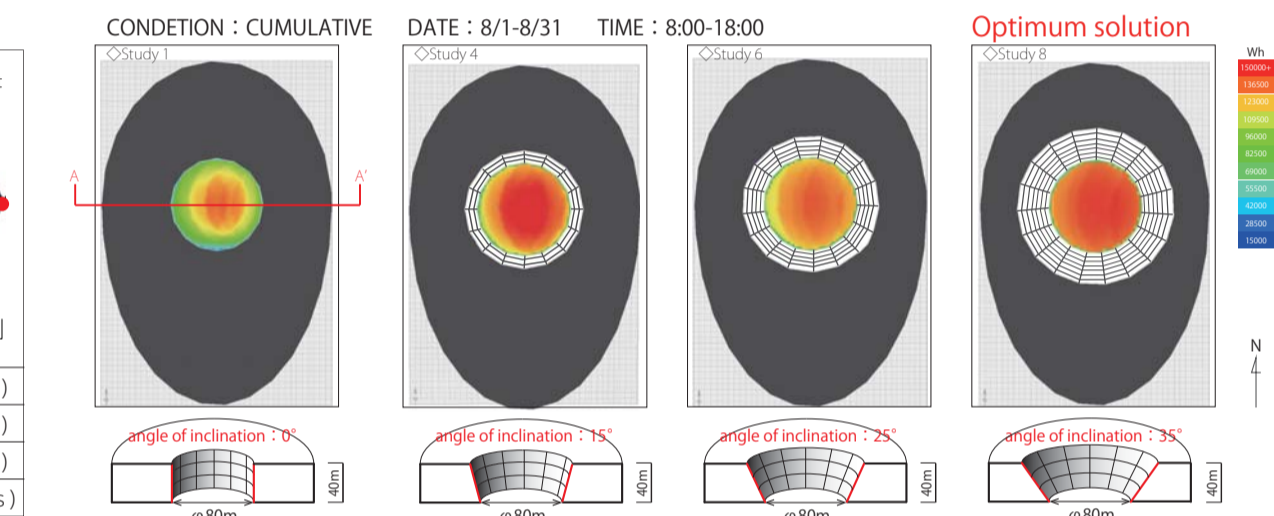
### > Human activity(Refuge)

We performed the refuge analysis of the type of A and B. As a result, B is faster than A for 11 seconds. Therefore we adopt B plan.



### > Sunlight

Change of the amount of insolation on the lens by the inclination of a wall was analyzed.

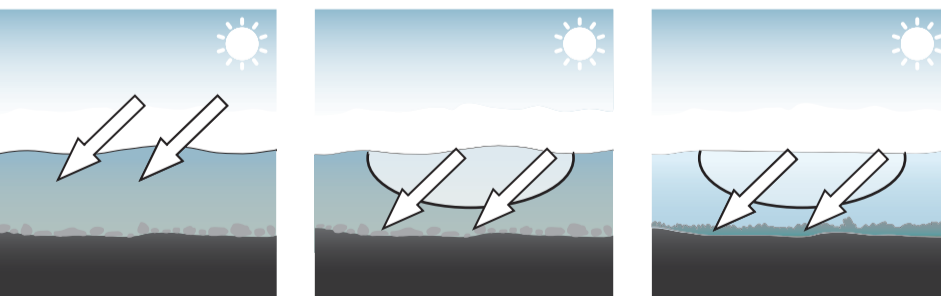


## 1. Purification of the sea water by sunlight

> phase1  
By the sludge collected on the seabed, sea water has become muddy. Tokyo Bay serves as environment unsuitable to habitation of a marine living thing.

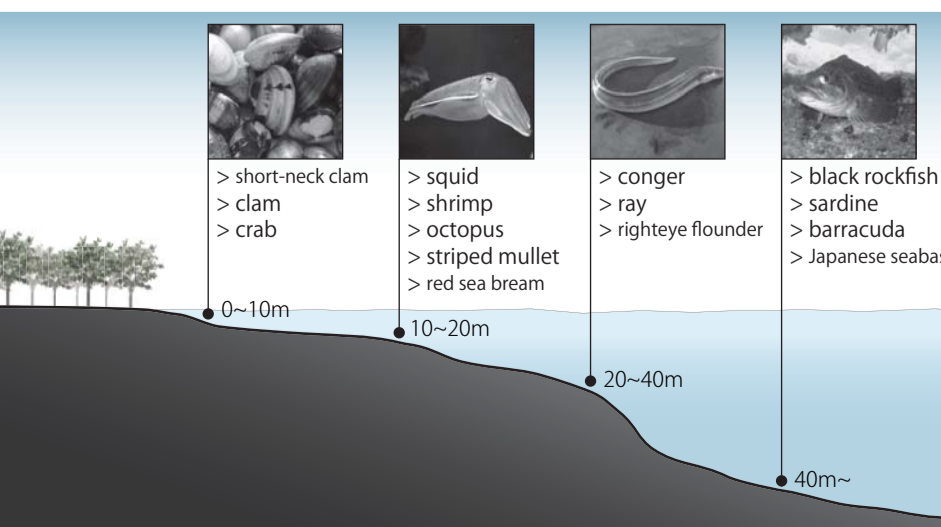
> phase2  
A central lens carries sunlight to the seabed covered with sludge. Phytoplankton begins photosynthesis and supplies oxygen.

> phase3  
A microbe is activated and sludge is decomposed. Marine living things flock in quest of the purified sea water.



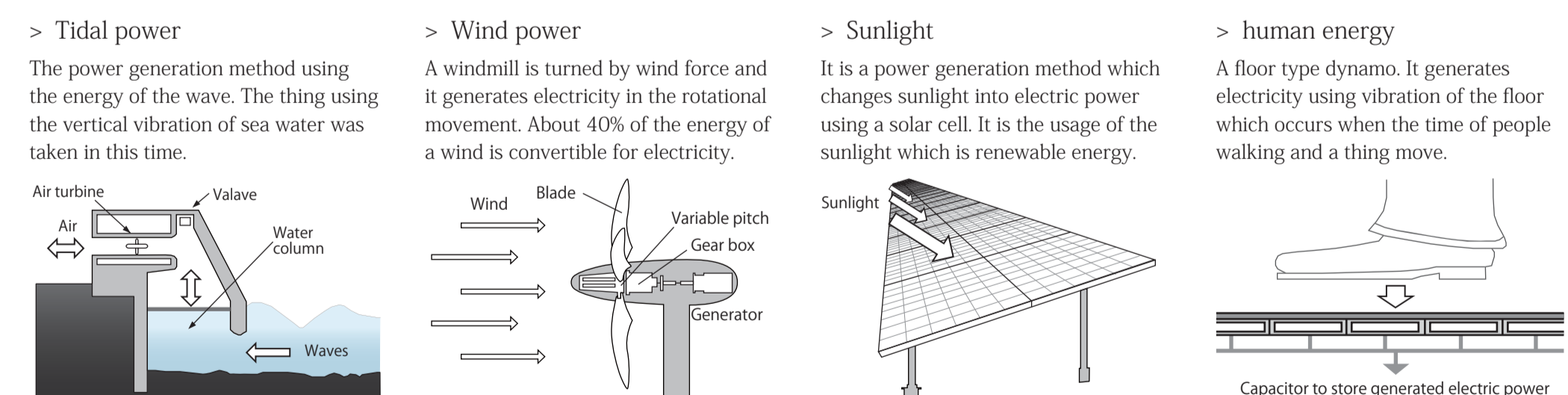
## 2. Fertile sea - various ecosystems -

The ecosystem currently formed originally revives all over the sea purified by the NA. A different ecosystem for every depth from a sea surface is formed.



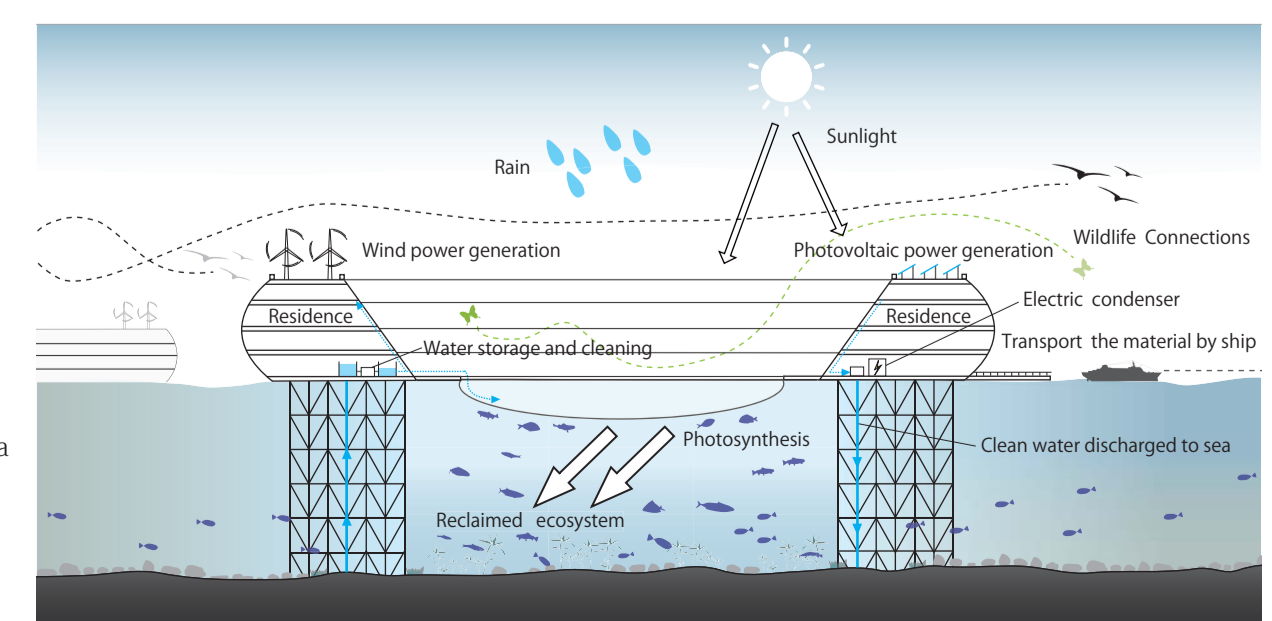
## 3. Practical use of natural power sources

The sea is surrounded by nature in north, south, east and west. That is a treasury of natural power sources. This place is a maintainable city which forms the power generation system on the whole. Actual technology is utilized in order to generate electricity from natural power.



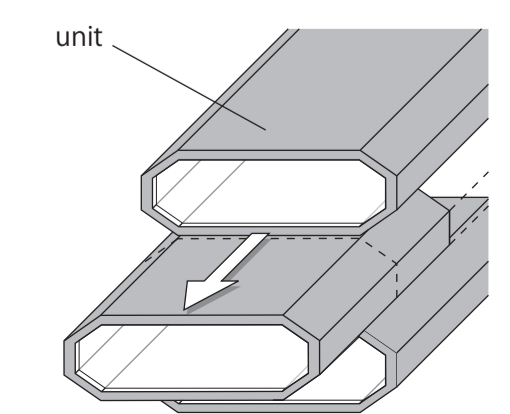
## 4. Circulation system of energy

NA which consists of various power generation systems forms the outstanding energy cycle system, and supports the life of people who live at sea. Various living things flock all over the sea purified with the lens. After further being purified by the filter, sea water is stored in a water tank and used also as domestic non-commercial water.



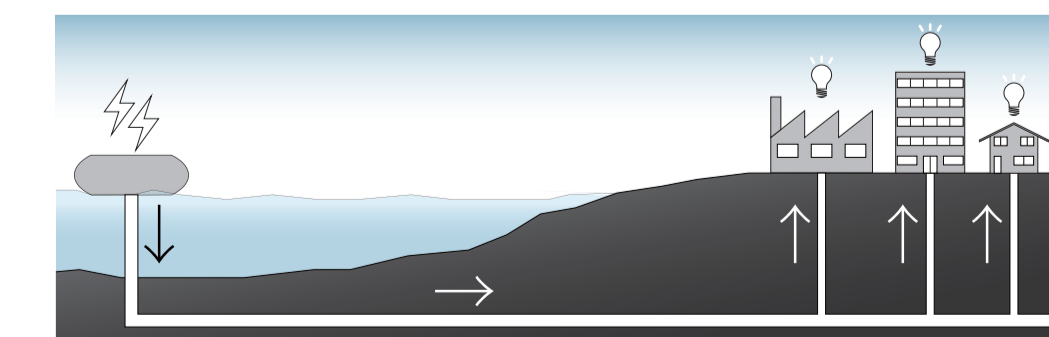
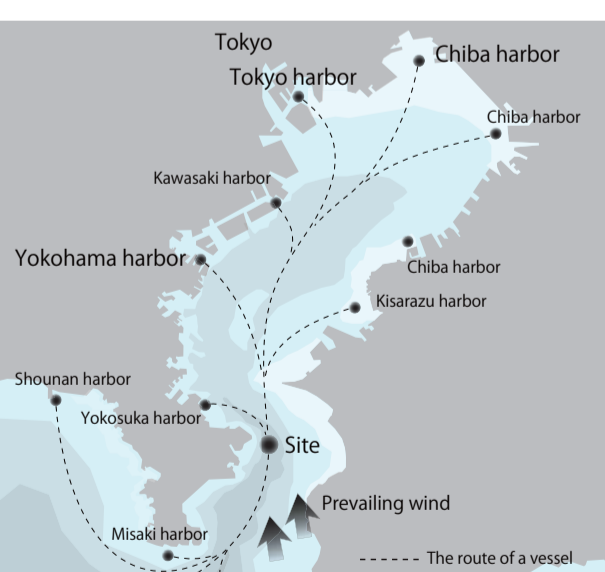
## 5. Aggregate of a unit

NA is formed because the units of various sizes gather. Each is able to be realized even when a unit is independent, and to drift the sea like a boat in an emergency.



## 6. A network with the existing city

NA forms metropolitan area every place and various networks. NA is playing a role of a new energy supply center to the metropolitan area. A part of energy generated by tidal power, wind force, sunlight, etc. is carried to the metropolitan area through a submarine pipe. The daily commodity of people who live in NA is carried by vessel from metropolitan area every place.



## 7. Facade which breathes

Briny air is transmitted to the surface of a wall. Change of atmospheric pressure arises and natural ventilation is performed by indoor air being taken out on the outdoors.

