

TOKYO BAY TOWER



DESIGN CONCEPT

The design of this station front is based on “eco-green” concept. The reason why this concept is chosen, is because of the global warming issue. This is not something new, in fact many countries all over the world has started showing their support towards solving this worldwide problem through total urbanization of their cities. Tokyo, one of the most busiest city in the world, is in dire need of an environmental friendly urban space. Therefore, this new station front also known as “Tokyo Bay Tower Station” encompasses on creating an environmental friendly space, as well as providing an urban space that allows people to enjoy the greenery in the center of Tokyo.

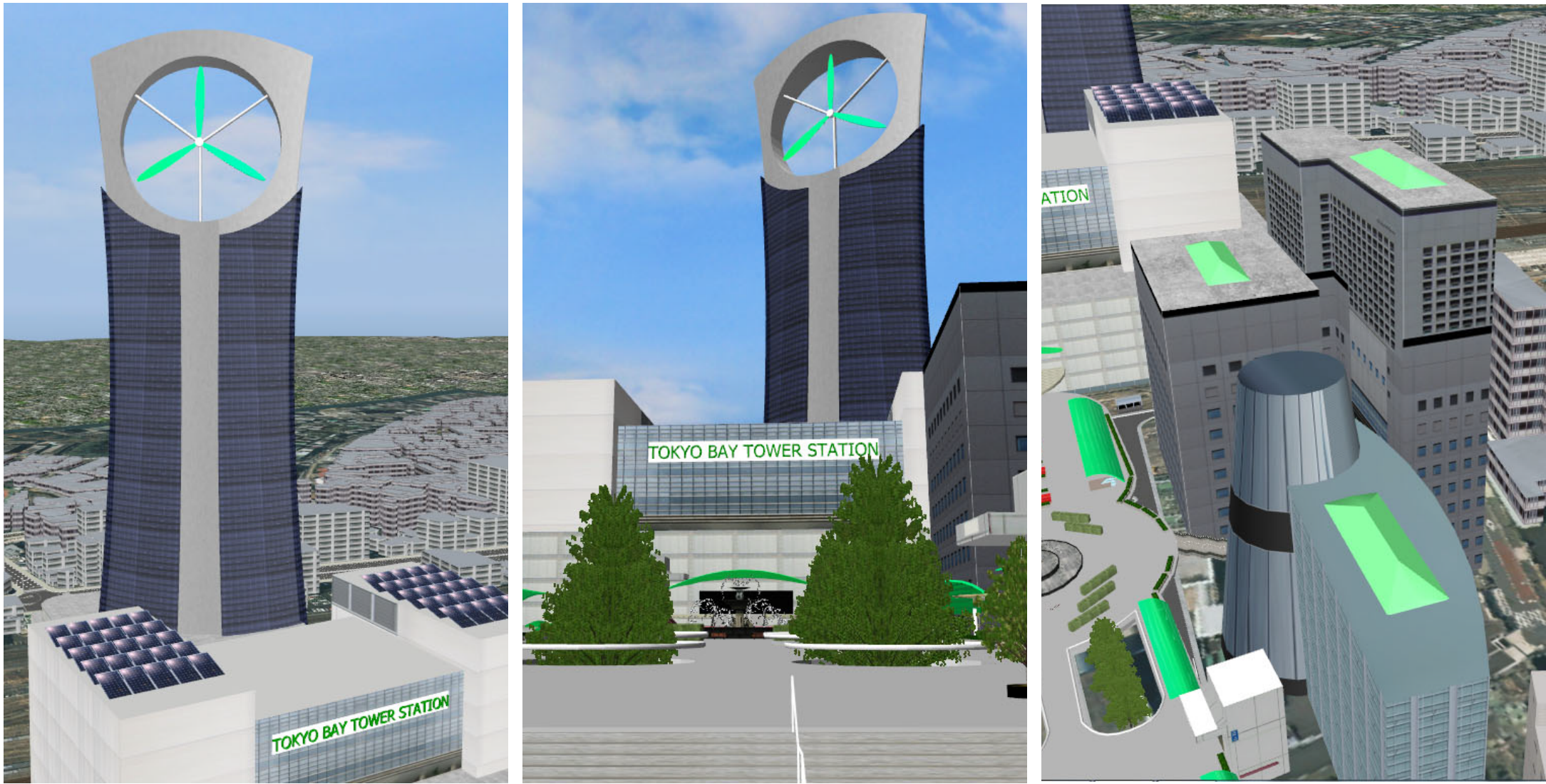


WHY TOKYO BAY TOWER?

Tokyo Bay Tower targets to become a symbol of the area that will be well known by all Japanese as well as foreigners alike. The tower itself has many meanings such as not just a tower that gazes upon the bayshore, but also a tower that looks upon the future. It also symbolizes an eco-friendly environment, in which the concept of the station front suggests.

RENEWABLE ENERGY

With the proper use of renewable energy such as wind and the sun, it is possible to create a self-sustaining station front. Electricity generated using solar panels & wind turbine may cut the cost of electricity usage to a considerably large amount. Plus, buildings built with natural lighting may also lessen domestic usage, thus optimizing natural power sources.



WORLD CLASS BUSINESS FACILITY

Tokyo Bay Tower targets to attract various merchant globally with its World Class Business Facilities. The main tower itself also acts as an office to accommodate for any business activities.

OLYMPIC GAMES 2020

As a preparation towards the upcoming Olympic Games that will be held in Tokyo in the year 2020, Tokyo Bay Tower also provides World Class Hotels to accommodate the vast number of visitors coming to Japan. The tower also serves as a symbol much like Skytree and Tokyo tower that will attract tourist visiting Japan.

TRANSPORTATION EXCHANGE HUB

This new station front will play a major role as a hub for people to transfer from one mode of transportation to another. The station provides various ways of transportation to move around the city of Tokyo. You can take a taxi cab to travel along the bayshore. From there, you can also take a bus to go sightseeing around the area, or even as an access to the Haneda International Airport.

