

◆Concept

A green belt has visual effects, cleaning air effects and other effects. So we should make the best use of a green belt. We paid attention to the cleaning air effect. In the SHINAGAWA city, there is a wind blowing from the TOKYO bay. A green belt cleans much air by catching the wind. Air that is cleaned is sent to around the town.

◆Space Configuration & Traffic Line Planning

▪ Space Configuration

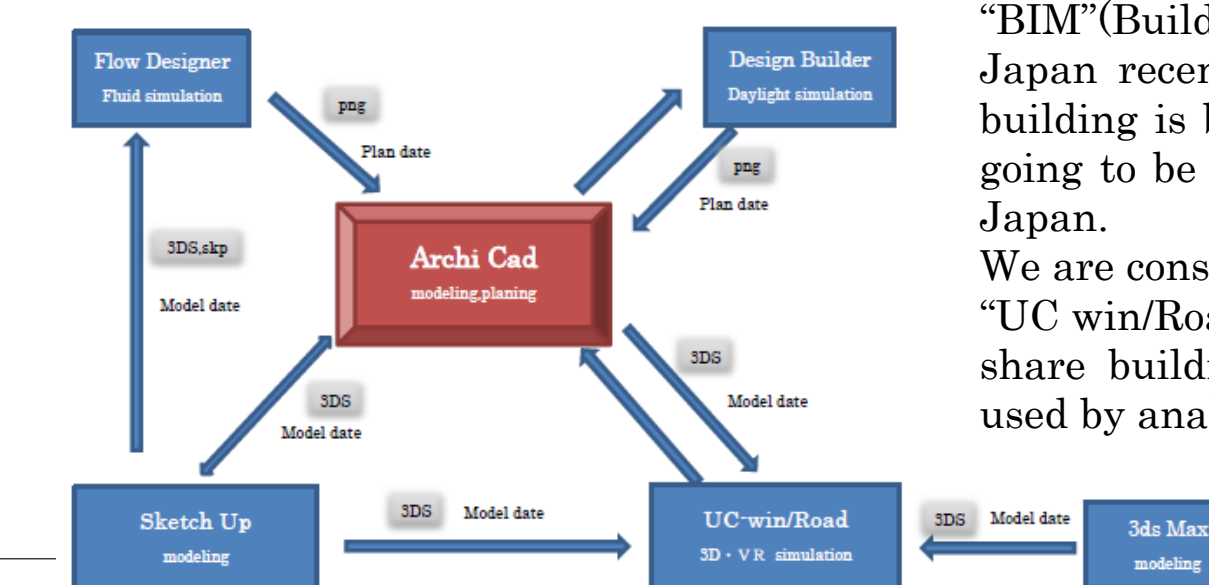
Adjacent two roads are tied by the plan. The new station is connection point, and the city spread it around. There is the roadway under the ground, there is the footway on the ground. By separating the footway and roadway, The green belt is more spacious and there is the rest area.

▪ Traffic Line Plannig

A vast green belt is arranged in the planning area. There is open space in the green belt. The open space is made use of cafeteria, events and more. And, many people are going to go the green belt.

The building is arranged around the green belt. It is a part of gathering the wind. Gathering the wind is cleaning by the green belt, and it is sent surrounding area.

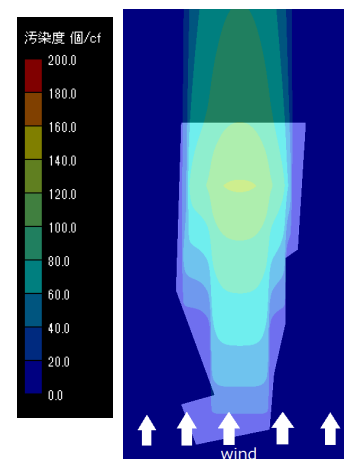
◆Collaboration Software



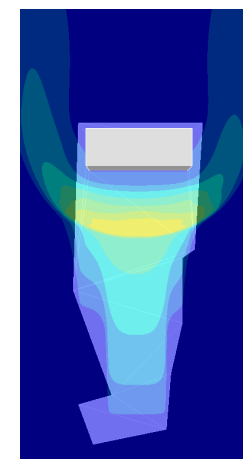
“BIM”(Building Information Modeling) is used in Japan recently. A work process is improved and a building is better by “BIM”. We think that “BIM” is going to be essential to the construction industry in Japan.

We are conscious of “BIM” as the center “Archi Cad”, “UC win/Road” and “Sketch up”. This three software share building model information, and the date is used by analysis software.

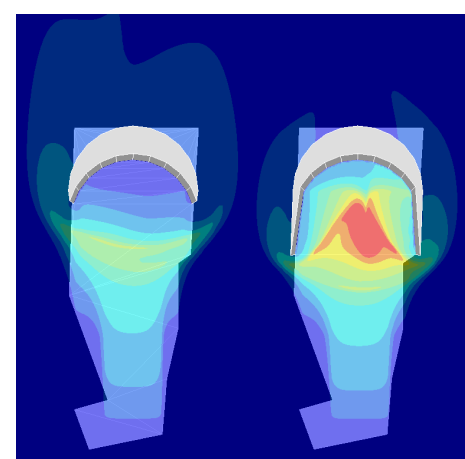
◆Green Fanction & Morphogenesis



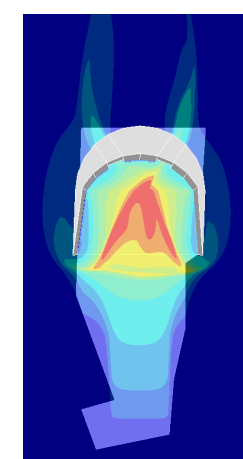
The site where the construction is planned is covered with green belt. It can make an air fresh.



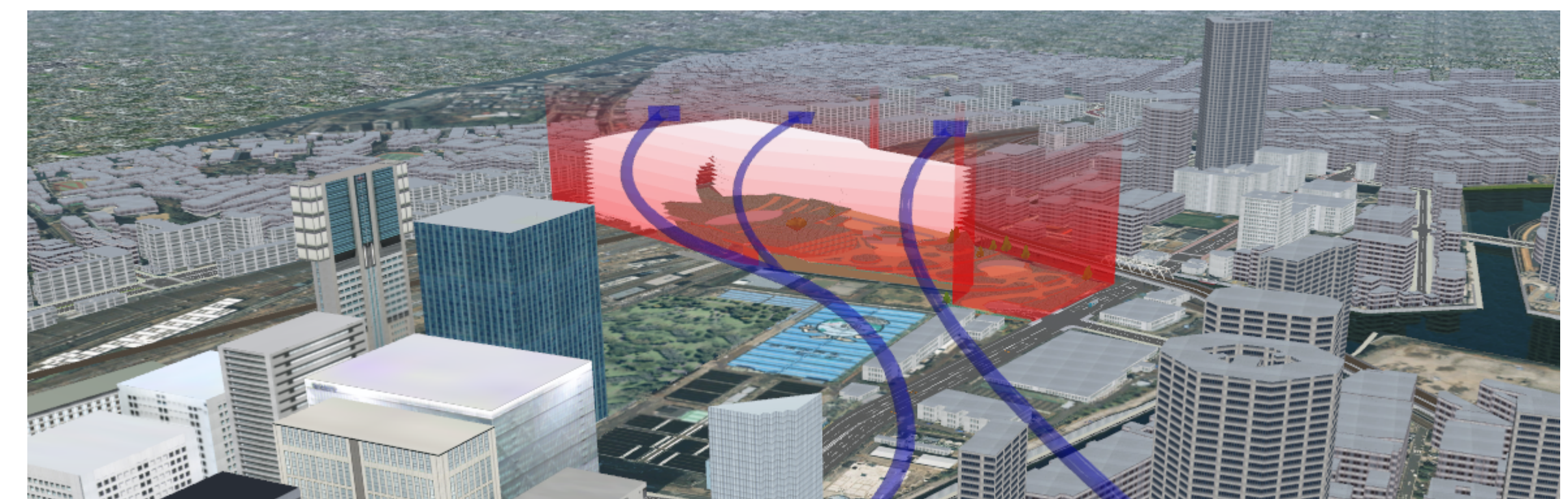
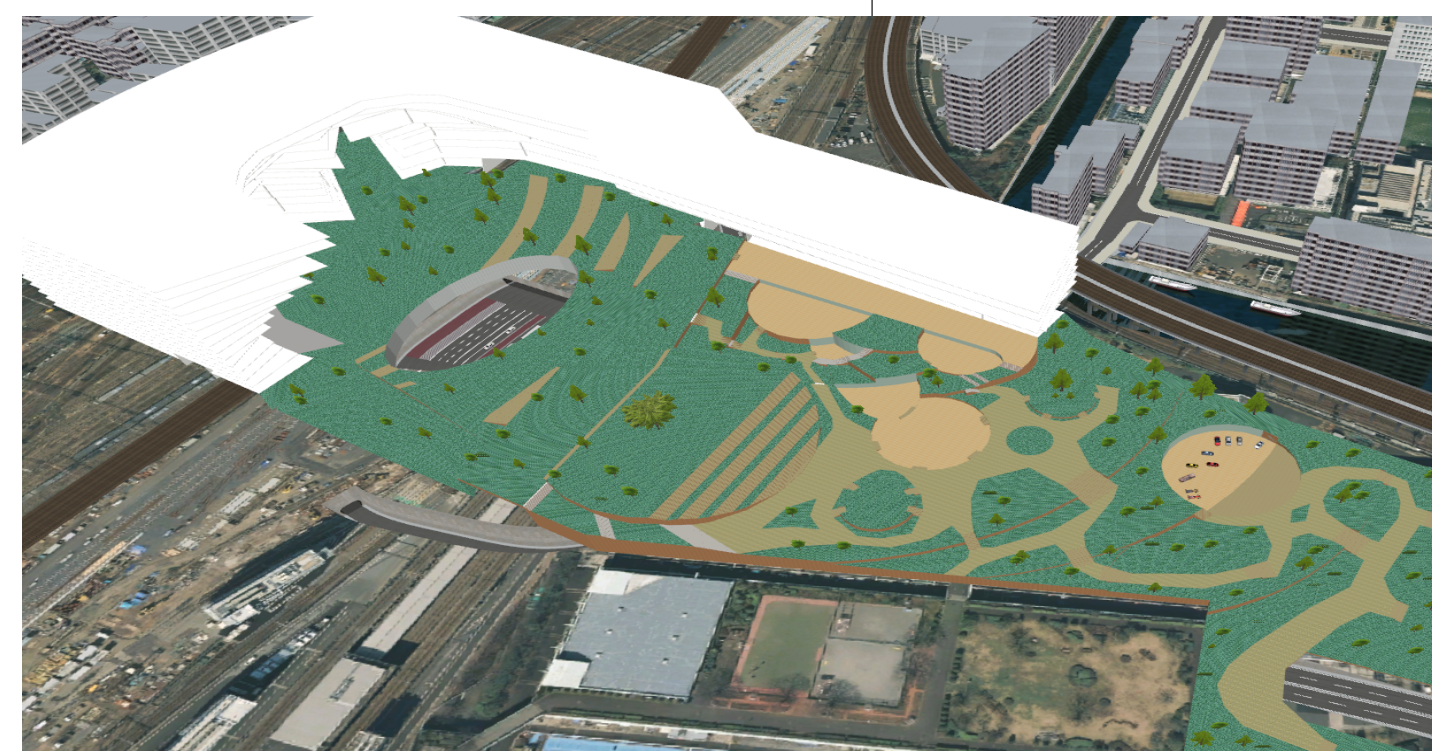
The wind is dammed up by the building. It makes the stagnant period of the wind in the area. The building location is planned to enhance the effect of the air purification.



Damming up a large amount of air is more effective to make an air fresh. When the building shape is sector, it tends to catch the wind. So the building has a sector shape. Consequently, green belt make air more fresh. We call this building “Wind Dam”.



In the site of a new station, the wind blows from Tokyo Bay to city area. The wind can deliver fresh air to city area. So we put two holes in Wind Dam. The holes make the routes what deliver fresh air to city area.



◆Design Builder

The way leading to a station is on underground floor.

Although the rotary of a station is underground, there is no ceiling.

The rotary gets sunlight..

Design builder analyzes sunlight of the rotary.

Design builder tell us the results of analyses.

The center of the rotary gets much sunlight.

And the edge of rotary gets little sunlight.

