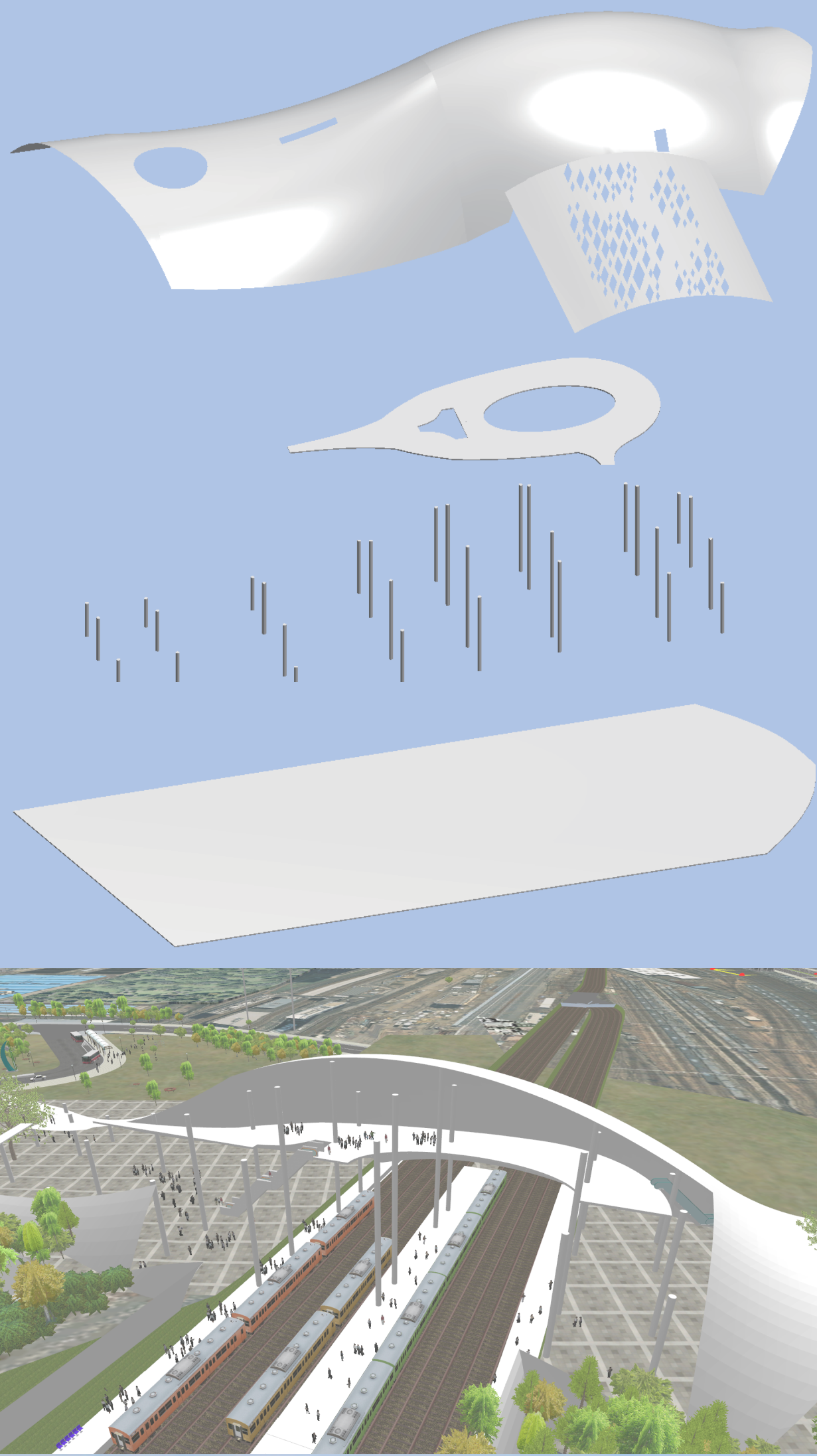


# Breathing Station

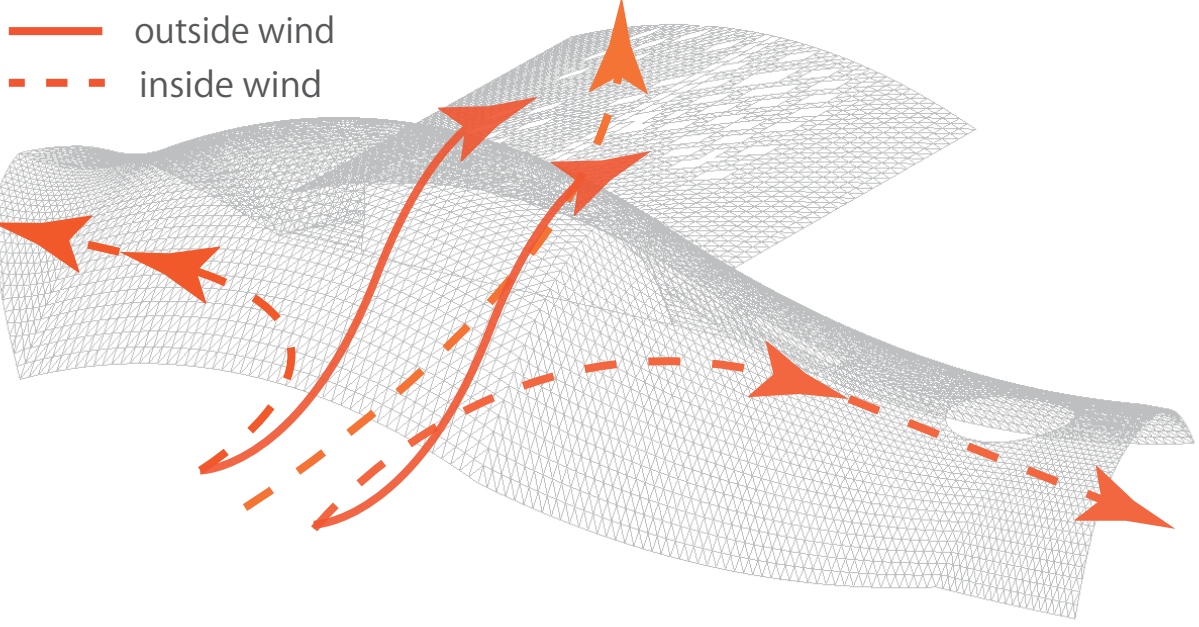
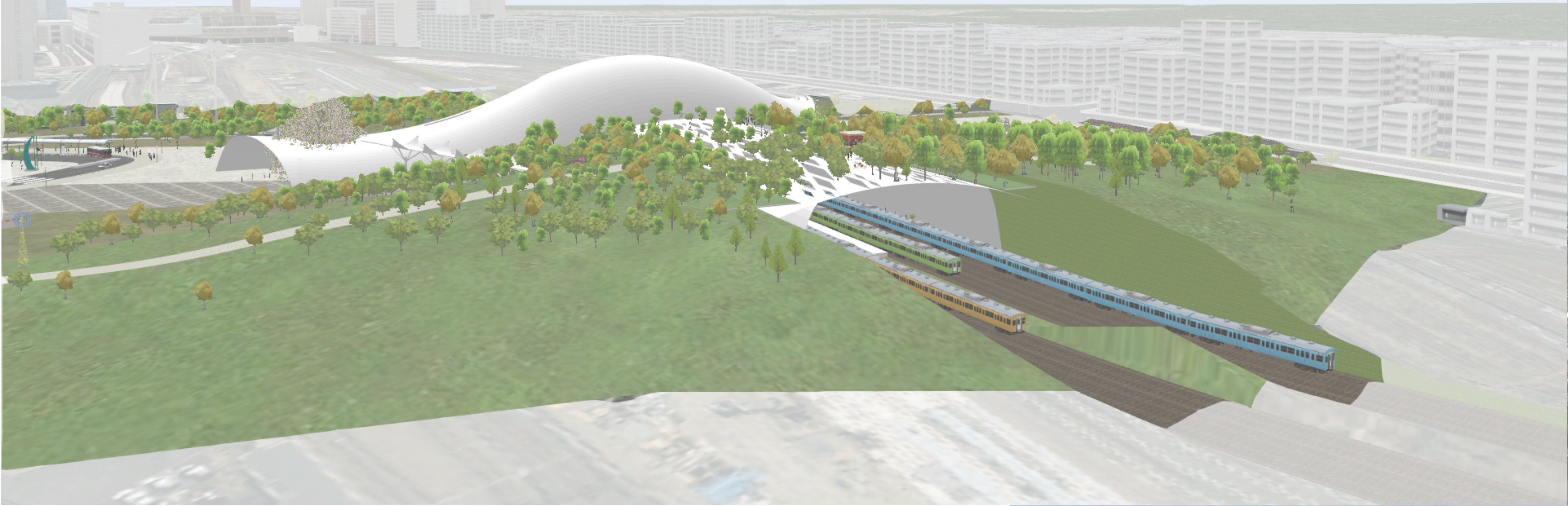
Our concept of a "Breathing station" is about the control wind flow into a city. In this station we address the topics of the surrounding terrain in the layout and structure and its effects of changing winds during different seasons. Also we considered a green combination by providing a bird path. The start of this station will bring new fresh air and green zones into city.



**Breathing**

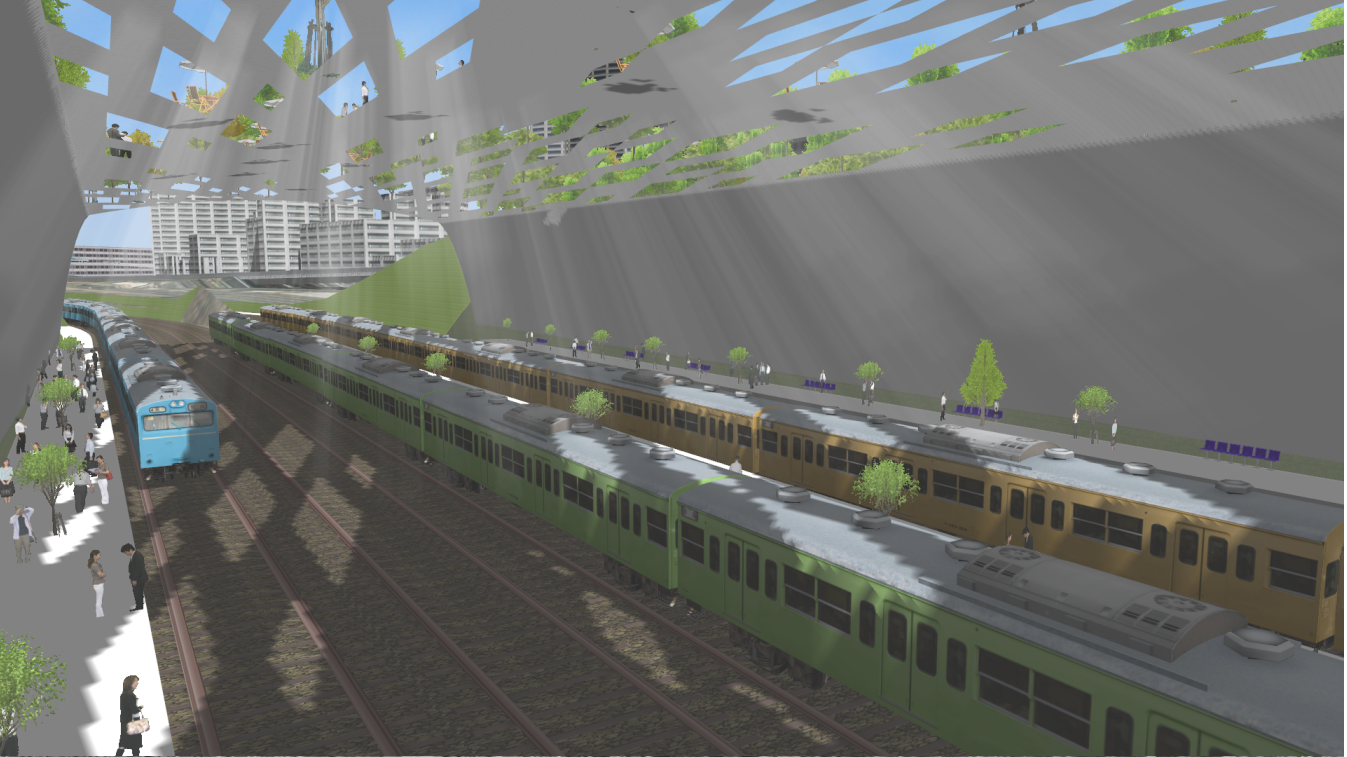
Curved surface figured station structure will allow wind freely come out of the station' s inside without any obstacles of wall.

In this station we have installed movable type of glass windows in the platform roof. The windows will be adjustable when to control wind volumes during different seasons. At the moment of the train arrivals gathered inside wind in the platform will come out through the windows. Oppositely, when the train departs the station, wind will be come into the platform through the windows. This air revolution function which rotates every train arrivals and departures, it expresses our important key of the concept which named "Breathing station" .



◆Wind path

This time one big point of the project area is that steady wind blows 50m above the ground of main area. So by keeping the height of the station inside 50m, we can sew up the wind road.



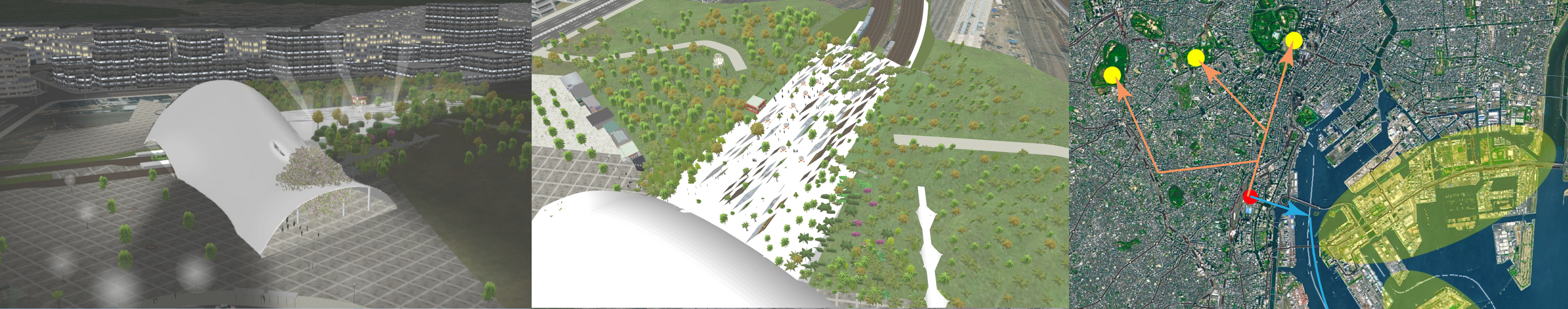
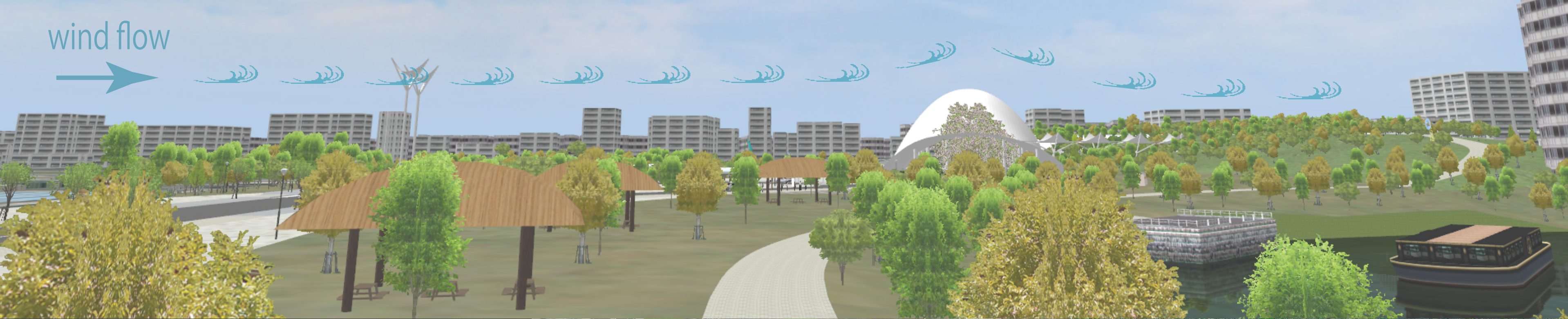
◆KOMOREBI

On the top of the station building we have designed an open and green space where people can take a rest. Also we have installed windows in the roof so that natural lights will come into the station' s platform. Plus, we can save energy.



◆Green cooperation

In this time the project' s surrounding area had a very small green space almost looks like short green lines. By our concept of "Breathing station" we create new green spots which will change the green lines into green surface. New way of birds is formed by green area thus began to spread



◆Olympic

We have enlarged the range of waterway from it's first layout and set a water-way-bus station. Also this is our another goal to create new combination of land transport with water transport and to build improved traffic flow and convenient access in the area of Tokyo Olympic 2020.