

# The 8th Virtual Design World Cup

## SHARABLE URBAN SYSTEM FOR FUTURE SHANGHAI

# THE CONNECTION

Revolutionising the transportation of Pudong

### Introduction:

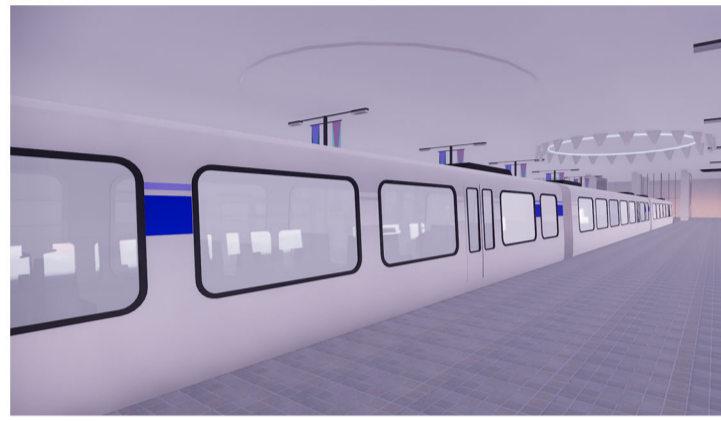
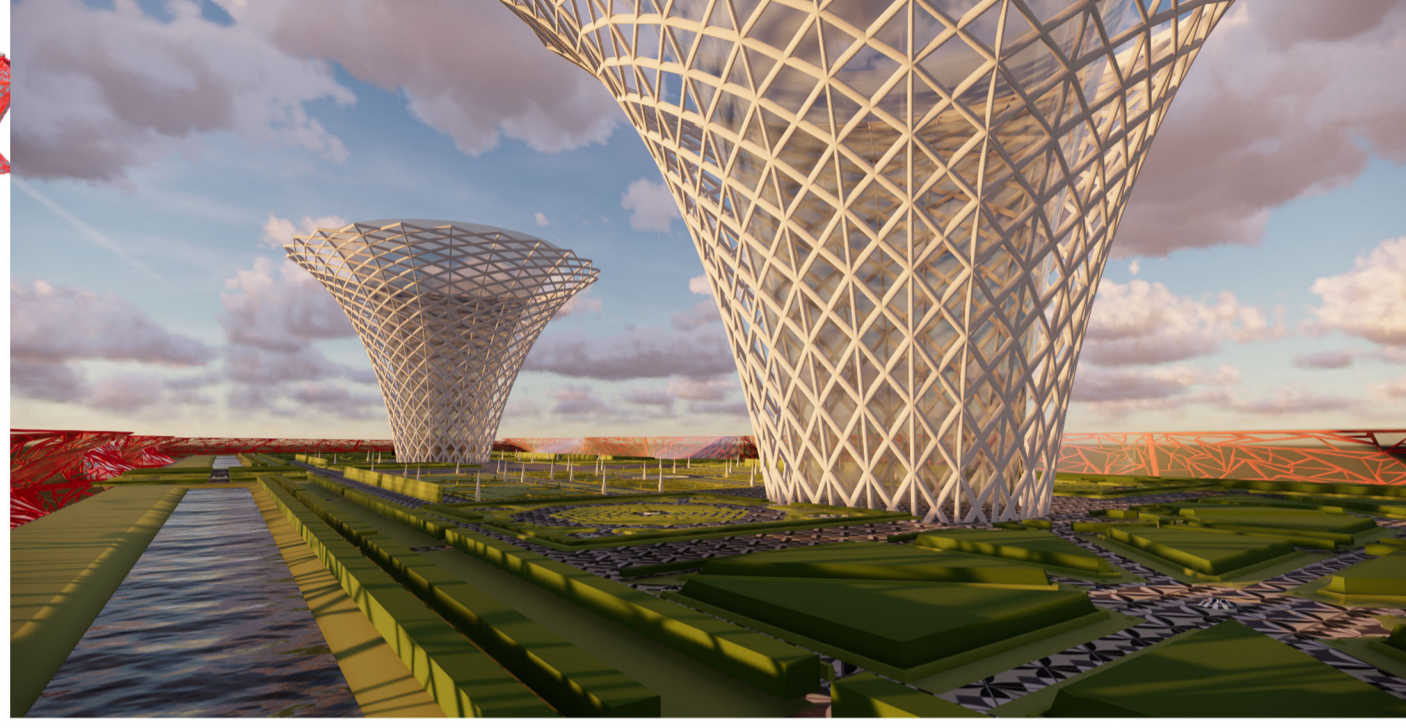
Pudong driving force of Shanghai's economic and social development must be prepared for the future extension of Shanghai into it. In order to achieve this, we devised a strategic plan 'the Connection' to show its preparedness for the growing world and city in development and to counter the discomfort caused to the citizen in transportation for the upcoming millennials. The connection simply connects its present transportation centers for upcoming and new transportations to create a hub of transportation network integrated into the city and monitoring it with the latest IoT technologies and prevent minimum discomfort and congestion for meeting transportation demands. The Connection helps in maintaining ecological Balance in creating a fully self-sustainable transportation Network

### DESIGN CONCEPT :-

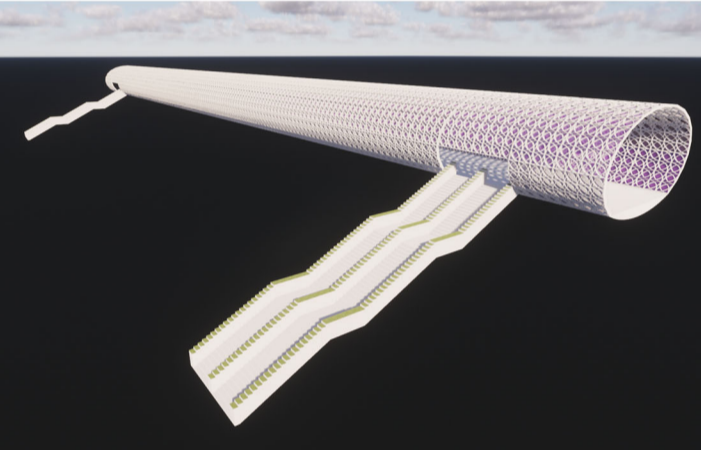
The Connection' the idea of the connection is inspired from the symbols of the Buddhist eternal knot. We have taken the concept of this into the transportation taking a full advantage of the sharable urban system. In order to meet the future need of the Shanghai extension city Pudong we planned to connect the line 2 metro of the Pudong with line 14 metro so that the high traffic during peak hours can be transferred to line 14 for less congested flow of traffic. The New proposal of a bus terminal at line 14 station for meeting future requirements of traffic without the affection the green cover.

### Why The Connection?

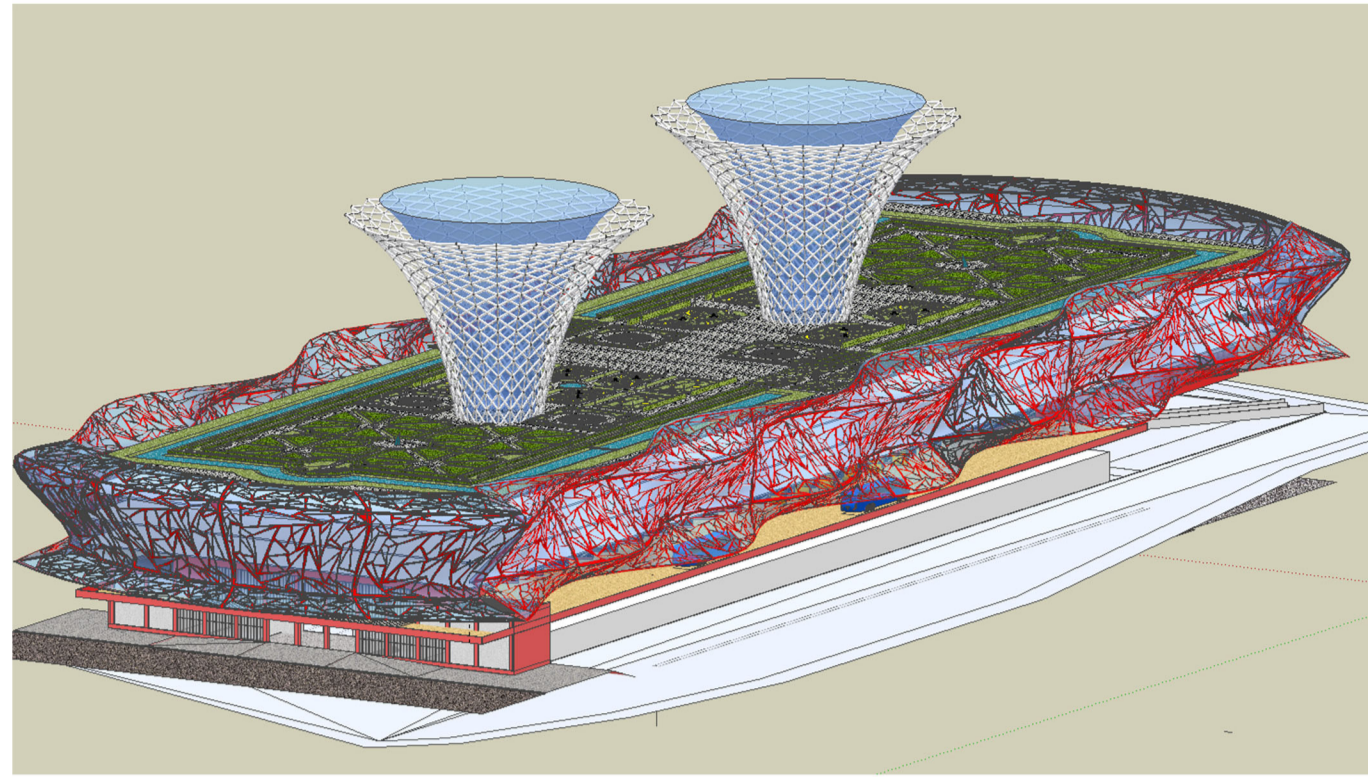
Transit-Oriented Development (TOD) embodies society's desire for vibrant, livable communities that are compact, walkable and centered on high-quality transit systems that enable residents to live, play and work with less dependence on cars. Transportation systems—well designed, well connected, easily accessible, multi-modal, and integrated into the fabric of their environments—are an essential part of prosperity and sustainability for all cities. Our approach to transportation systems seamlessly integrates architecture, infrastructure planning, and urban design to create healthy, efficient, inviting environments.



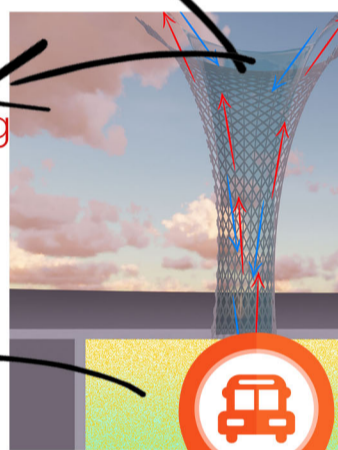
Passive lights to prevent suicides in the metro stations and the passive light emitting glass for a calmer and a peaceful environment



The bridge connects line 2 and line 14 for decreased the passenger flow during rush hour at line 2 metro station.



Exchange of Hot And Cool Air



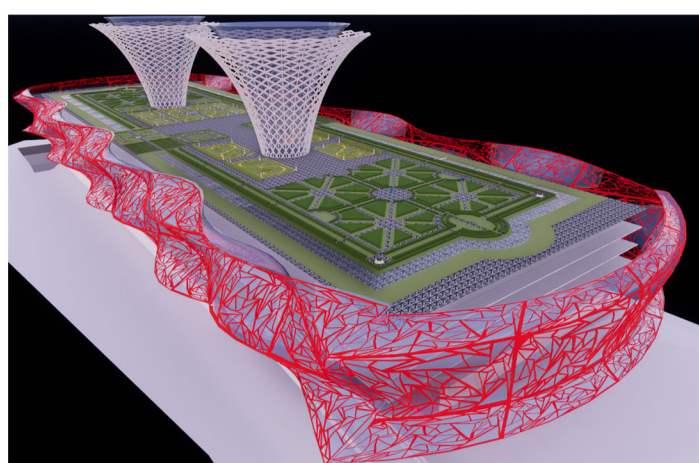
Glass wall to prevent rain water into the building

Rain Water Into Harvesting Pit

### Light Column:-

Featuring two well designed dramatic Light Column, which will allow natural daylight and fresh air into the Transit HUB. Its more functional than its aesthetics. It is designed in such a way that it collects the rain water and flood water in case of natural calamities and sends it into the flood reservoir and prevents in submerging of the station below and allow it to work in full capacity for in times of need

### TRANSIT HUB :-

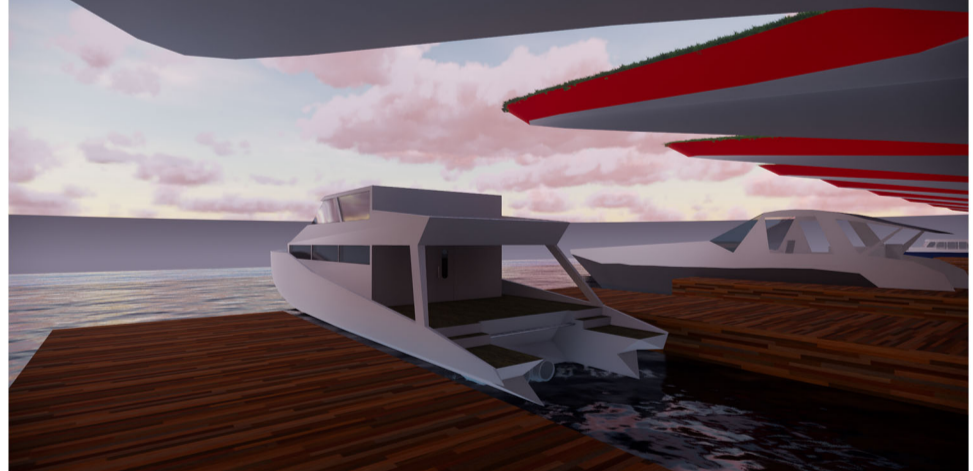
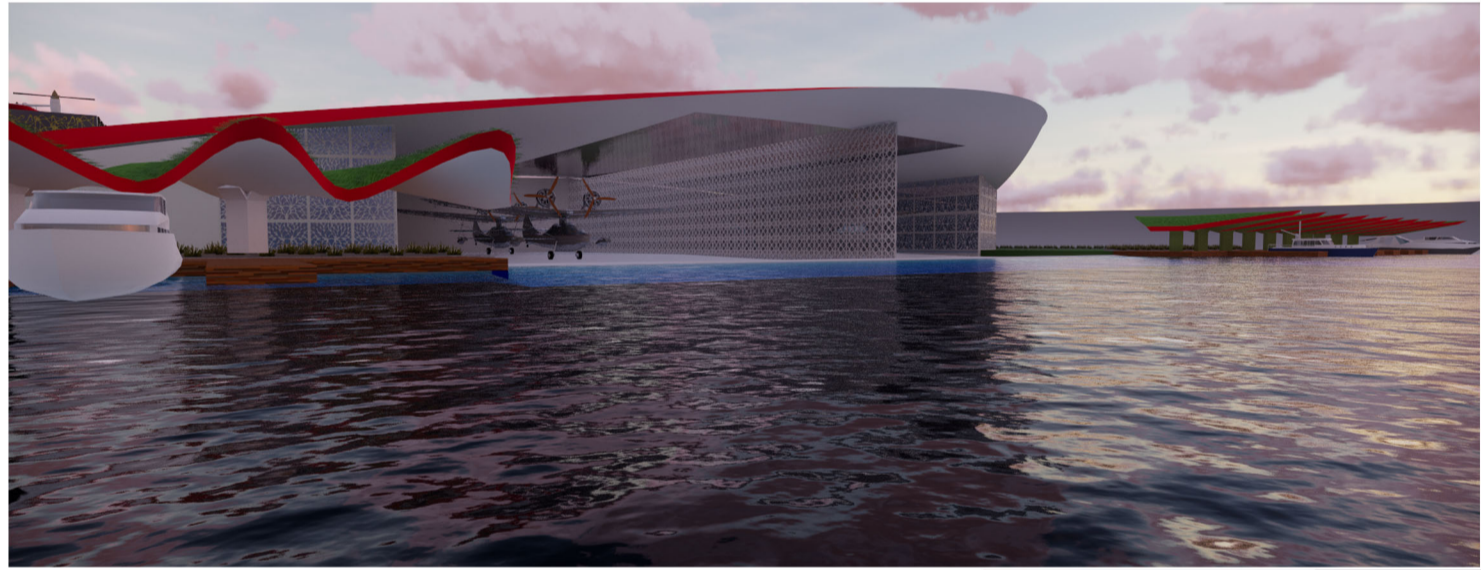


### Features of Transit Hub :

- Pedestrian bridge that connect the Transit Hub to surrounding development and line 2 and line 14 metro.
- Provides unique retail shopping and dining experiences.
- Will support all means of road and rail transport systems with a future extension of air transport through Uber Air.
- Featuring City Park, a 4.98-acre rooftop public park. The 861-foot-long elevated linear park will include a variety of activities and amenities, including an open-air amphitheater, gardens, trails, open grass areas, children's play space, has well as a restaurant and café.
- Featuring the Grand Hall, which will include an information center, ticket kiosks, automated ticketing and the main escalators.
- A beautifully Designed exterior facade which would soon be a tourist hotspot
- Use of passive Led Lights which would calm down the mood of passengers for a hate free travel and helps in crime&suicide prevention among individuals.
- Conference halls for conducting meetings by various other firms .
- Dormitories for people for their short stay to Pudong Financial district

### PUDONG SEAPLANE TERMINUS:

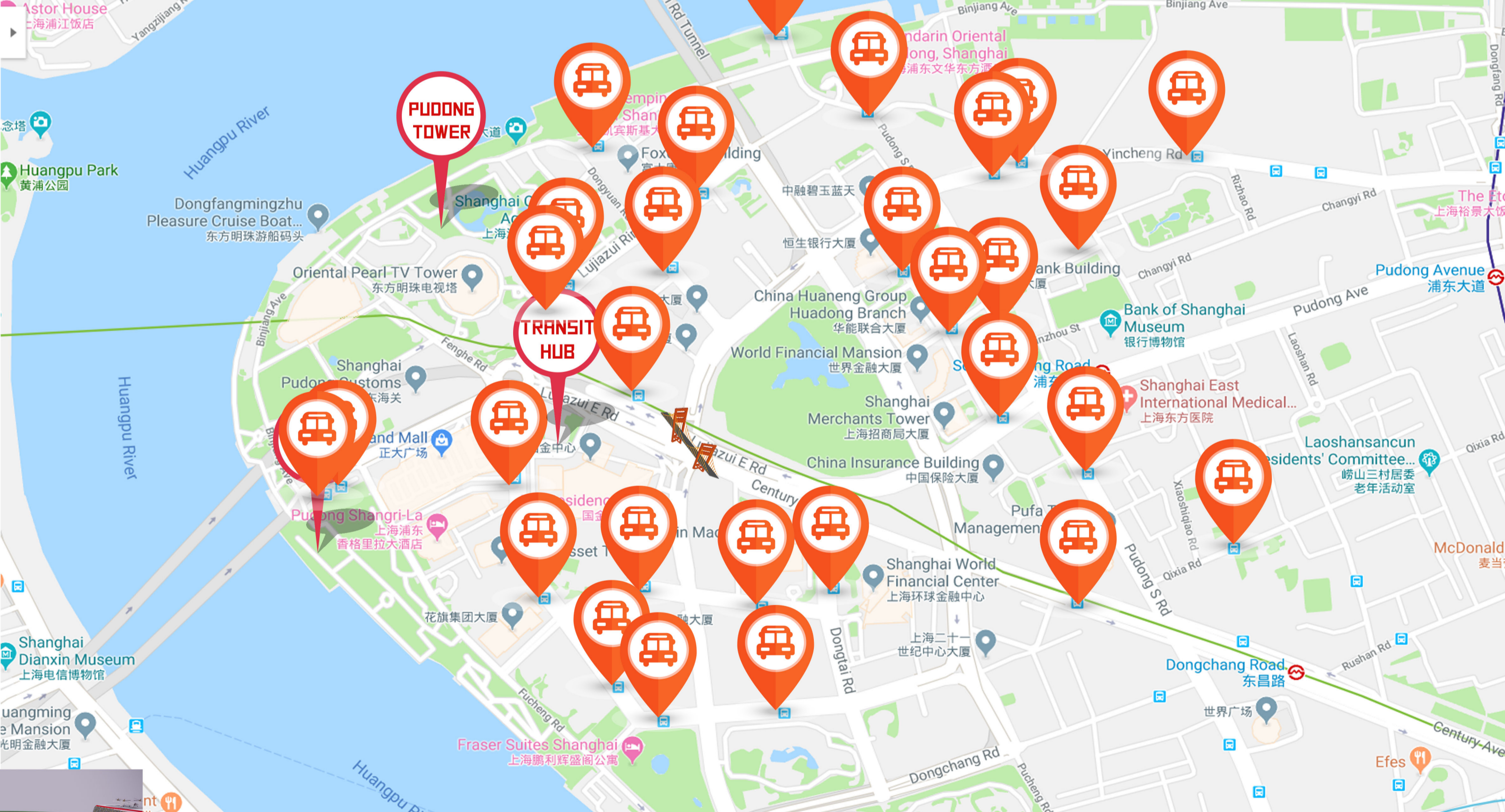
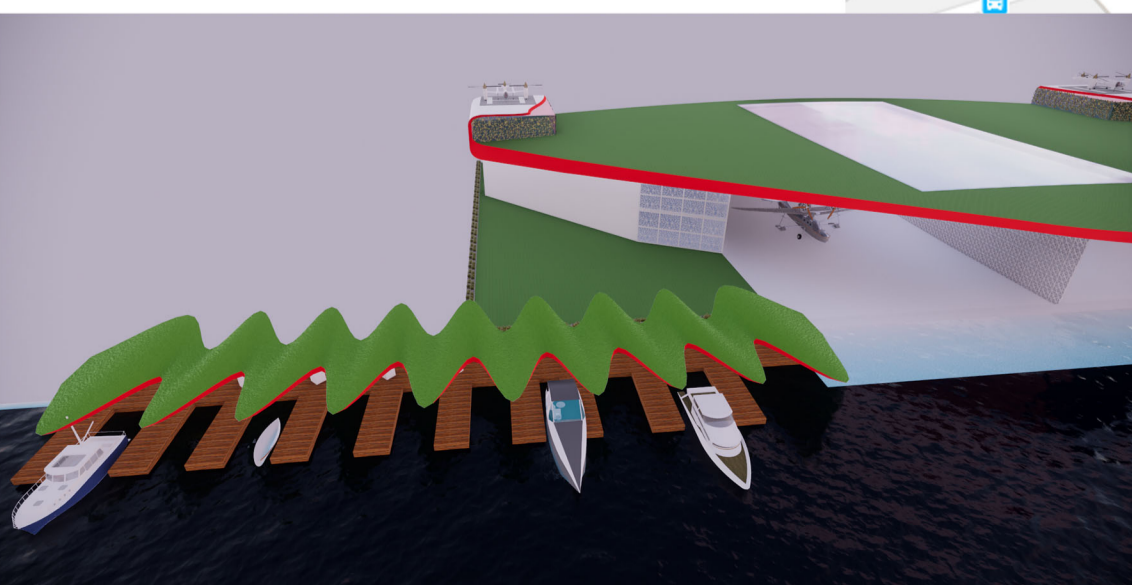
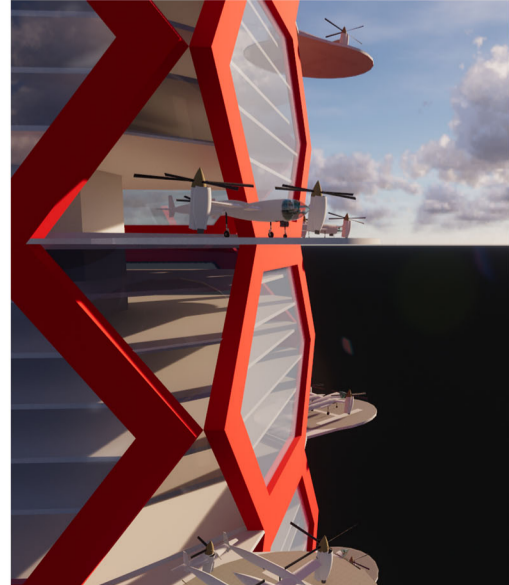
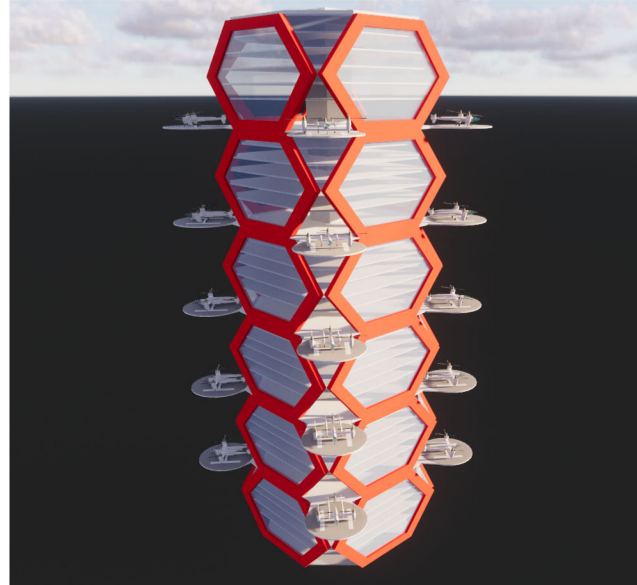
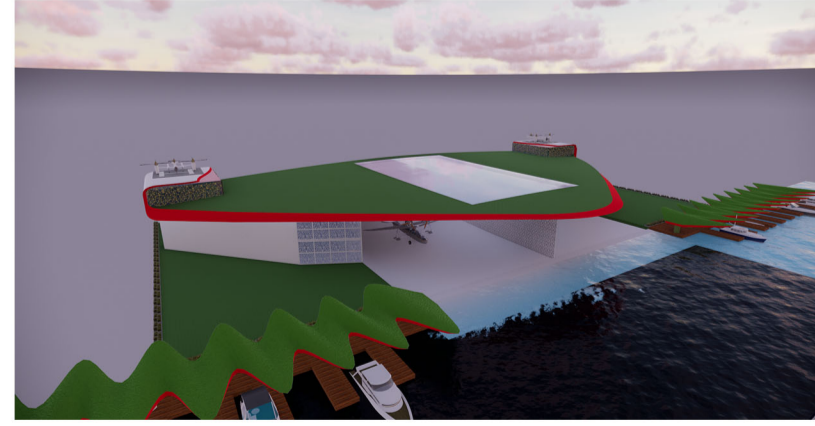
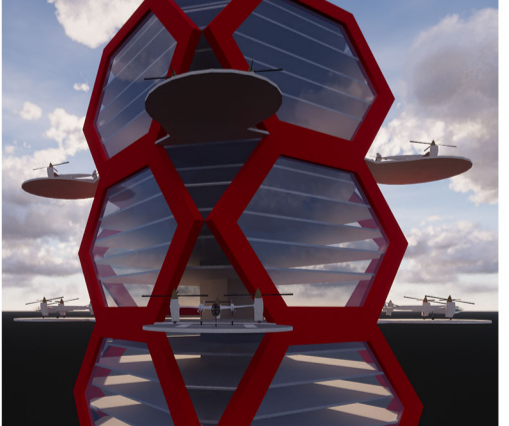
At present the fastest mode of transportation is airways, to connect Pudong in future the Huangpu river plays a key role ,which helps in landing seaplanes. To make this planes functional Pudong seaplane terminus will manage seaplanes between Pudong & airport easily, this helps in connecting Pudong to the world. The seaplane terminus has access boats which connects riverbed of both Shanghai & Pudong districts. The sea plane terminus also has access to uber air taxis which connects all local parts of the Shanghai district. Pudong seaplane terminus can handle china's 4 LARGEST AMPHIBIOUS AIRCRAFT AVIC AG600 seaplanes, 2 uber air taxis, 20 small scale speed boats. Terminus consists Tourist Info office, restaurants, Ticket booking kiosks & office with Sustainable Resources.v



### PUDONG TECH HUB TOWER

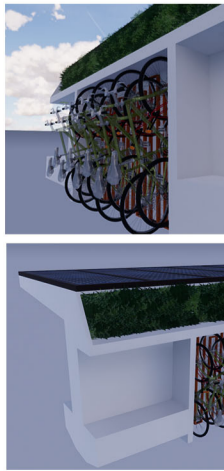
The Pudong tower is a state of Architectural master piece of modern design. The design of tower is very much simple but quite functional. The hexagon structure acts as both aesthetic and functional by combining them forms an earthquake resistant structure which helps in less damages at the time of earthquakes and less damage to the building

The Pudong tower acts as a multipurpose building with sharable office spaces for upcoming startup business just like a startup hub. The Pudong tower is designed in such a way that it could accommodate uber air every 5th floor for the faster transport of people from the heart of the city with ease.



### MODERN PUDONG BUS STOP:

This Self Sustained Bus stop consists of solar panels & greenery on the top surface which helps in reducing heat. It has vertical sharable Bicycle parking, reduces lot of space. These Bicycles Stores Kinetic energy in a battery when a passenger rides the cycle. The Stored Kinetic energy helps in generating clean & green energy.



### SOFTWARES USED :-

UC-win/Road

