

DOKODEMO

THE 13TH VIRTUAL DESIGN WORLD CUP

THEME2023 :

TWO MAJOR REVERSALS BROUGHT TO JAPAN'S ORIGINAL LANDSCAPE

-THE FUTURE OF MOBILITY AND LIFESTYLE IN ENA CITY.

DESIGN BY: "MINSTREL TROUPE"

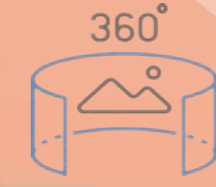
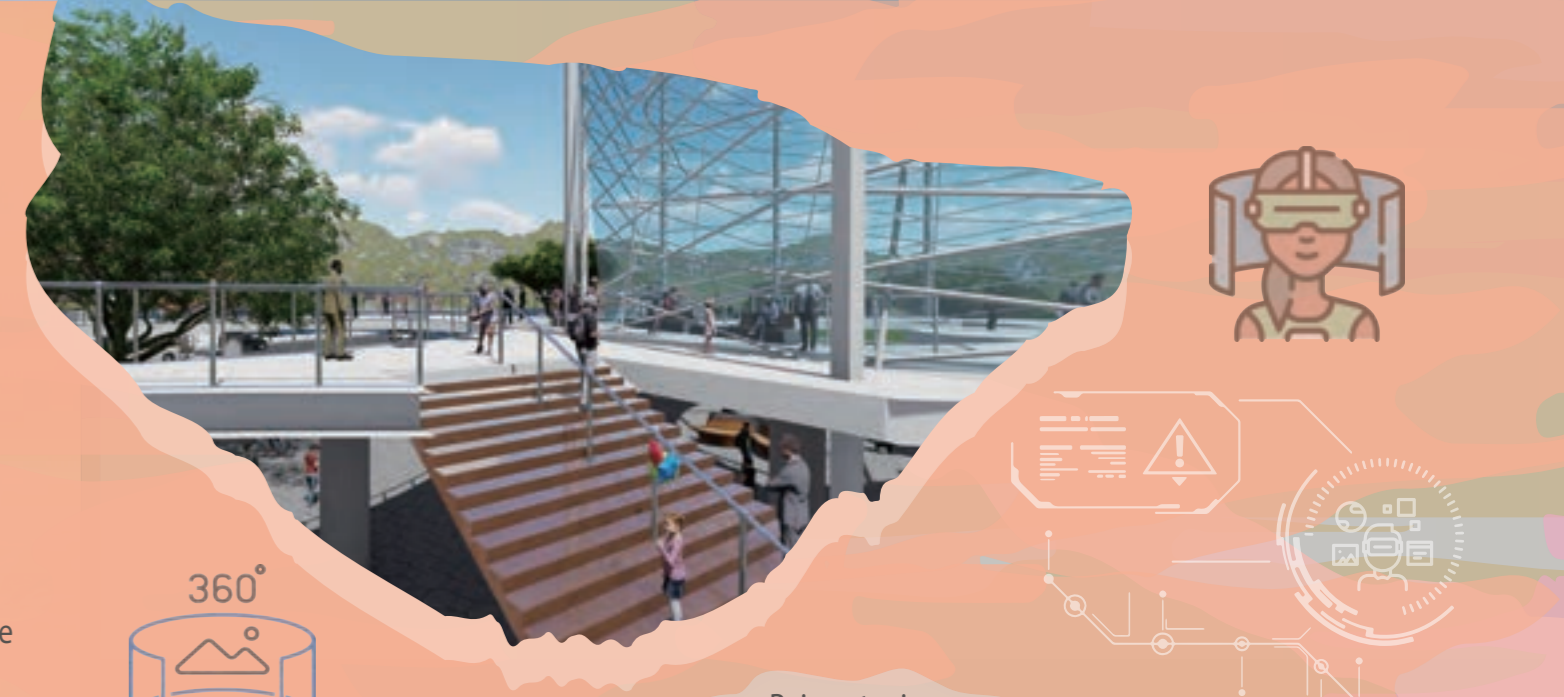
INTRODUCTION

DOKODEMO is an automated transportation network that integrates XR virtual technology. It enables users to reach their destinations using various modes of transportation while offering virtual experiences of traditional cultural features and an improved healthcare system.



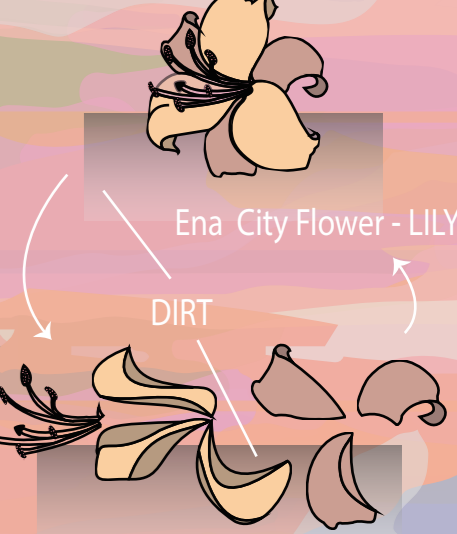
CONCEPT

Taking inspiration from the concept of "Dokodemo," resembling a magical door to anywhere, we've combined the main station with underground virtual corridors, allowing people to effortlessly travel between various stations using vehicles. Additionally, we've incorporated the Japanese Lily, the city flower of Ena, as the prototype for our Lakeside Transfer Station. This station exudes the charm of Japanese Lilies, with vehicles gracefully gliding over the water, reminiscent of pollen drifting in the wind. This design enables our vehicles to roam every corner of Ena City, allowing visitors to experience a variety of rural landscapes and cultural characteristics.



Rainwater is collected from the top of energy towers and converted into electricity by harnessing kinetic energy, ensuring the continuous operation of transportation systems while conserving energy. This benefits environmental protection and guarantees a stable energy supply.

ENERGY TOWER



Individuals with mobility limitations, as well as the elderly, can receive medical care remotely within the Units-Petal, regardless of their location. This reduces commuting time and conserves healthcare resources. It not only enhances medical efficiency but also improves people's quality of life.

XR HEALTHCARE

XR HISTORY

The application of XR technology enables people to immerse themselves in history and even personally experience the past urban landscapes and interact with historical figures. Combining interactive historical experiences with education and tourism allows people to gain a deeper understanding of the city's history.



UNDERGROUND VIRTUAL TUBE CORRIDORS

Utilizing underground corridors as routes for transportation and preserving the old-town charm of Ena City while allowing passengers to enjoy outdoor scenery through virtual imagery. It combines modern technology with the principles of cultural preservation.

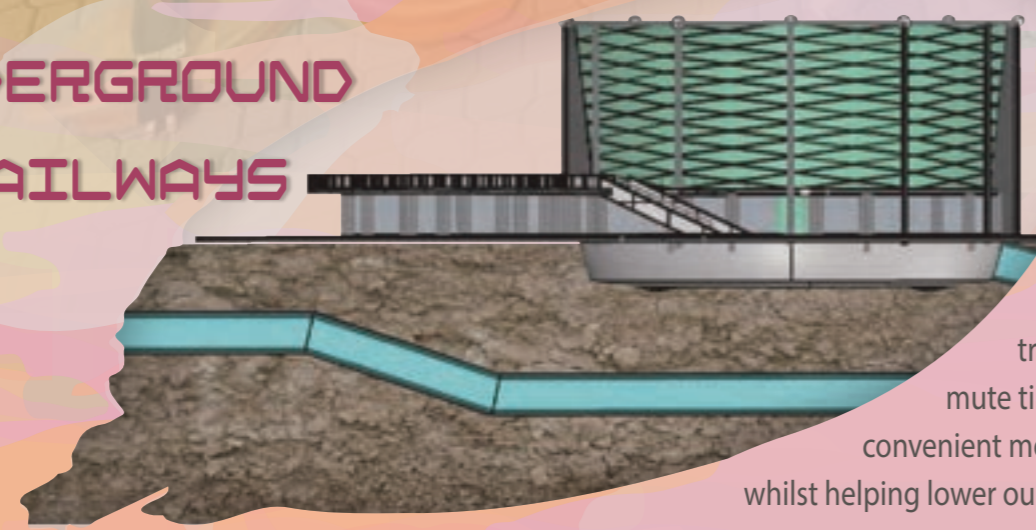
Lake stations offer a unique urban viewing experience through water-based transportation systems. These systems can traverse across the surface of lakes and even elevate above the water level, providing spectacular views.



LAKE TRANSFER STATION

UNDERGROUND RAILWAYS

Underground transportation systems not only reduce the risk of accidents but are also less affected by weather conditions. They help alleviate surface traffic congestion, shorten commute times, and provide a more convenient mode of transportation whilst helping lower our carbon footprint.



ECOLOGICAL PLATFORM

The main function of ecological platform is to reduce the heat effect of urbanization, and to promote species diversity and ecosystem stability. It not only reduces carbon emissions, but also provides greening, which is a good response to global warming.



MAIN TRANSFER STATION



MAIN TRANSFER STATION

UNDERGROUND VIRTUAL TUBE CORRIDORS

XR HISTORY

LAKE TRANSFER STATION

UNDERGROUND RAILWAYS UNITS-PETAL