



10.2015
Keelung, Taiwan

KEELUNG GO

✕ **Team : Penta Planning**
Software : UC-winRoad ALLPLAN
A NEMETSCHEK COMPANY



the main planning site of Keelung Go project

Keelung was once the 7th largest container harbor in the world. Its frequent rain and maritime role make it its nickname “Rain Port”, representing its climate character. Nowadays, its role as a container harbor faded. Keelung devotes itself in tourism, unveiling its vitality in culture and history.

基隆
KEELUNG

SITE ANALYSIS

We found out that the west side of the harbor is now facing a dreadful issue : There are nearly no space for pedestrians to walk. The area is oriented mostly for vehicles. Two roundabouts in front of the old station result in traffic congestion.

CONCEPT

To bring back the space for pedestrians, Keelung Go project would divide the space vertically: We would design two transit building. At the ground floor, we replaced the two roundabouts with a whole new traffic plan, including a bus transit center, a long-distance bus transit center and a kiss-and-ride stop. We conceived, at the first floor, a open space for pedestrians, connecting new north and south stations, west passenger terminal and the existing portal square all the way to the east side of Keelung harbor.

TRAFFIC PLAN

Based on the railway underground project and the construction of new north and south stations, Keelung Go project first extended Zhong 1st Road to Zhongshan 1st Road. we dismantle the existing roundabouts and Zhongshan bridge and then straightened Gangxi Street to connect Gongyuan Street. Between the north and south station, is the bus transit center. We opened two roads for it, Gangxi 2nd St. and Gangxi St. Ln. 1. Buses would enter the center from Gangxi St. Ln. 1 and drive away on Zhong 1st Road. In total there would be 4 stops inside. The kiss-and-ride would be just adjacent to it on Gangxi 2nd St. The long-distance bus station would be inside the building B. Long-distances buses could connect to the highway though Zong 1st Rd and Zhong 1st Rd. Alongside the north station would be the taxi stand.



Overall view of the traffic



Kiss-and ride stop



Design of Bus Transit Center



Taxi Stand adjacent to North Station

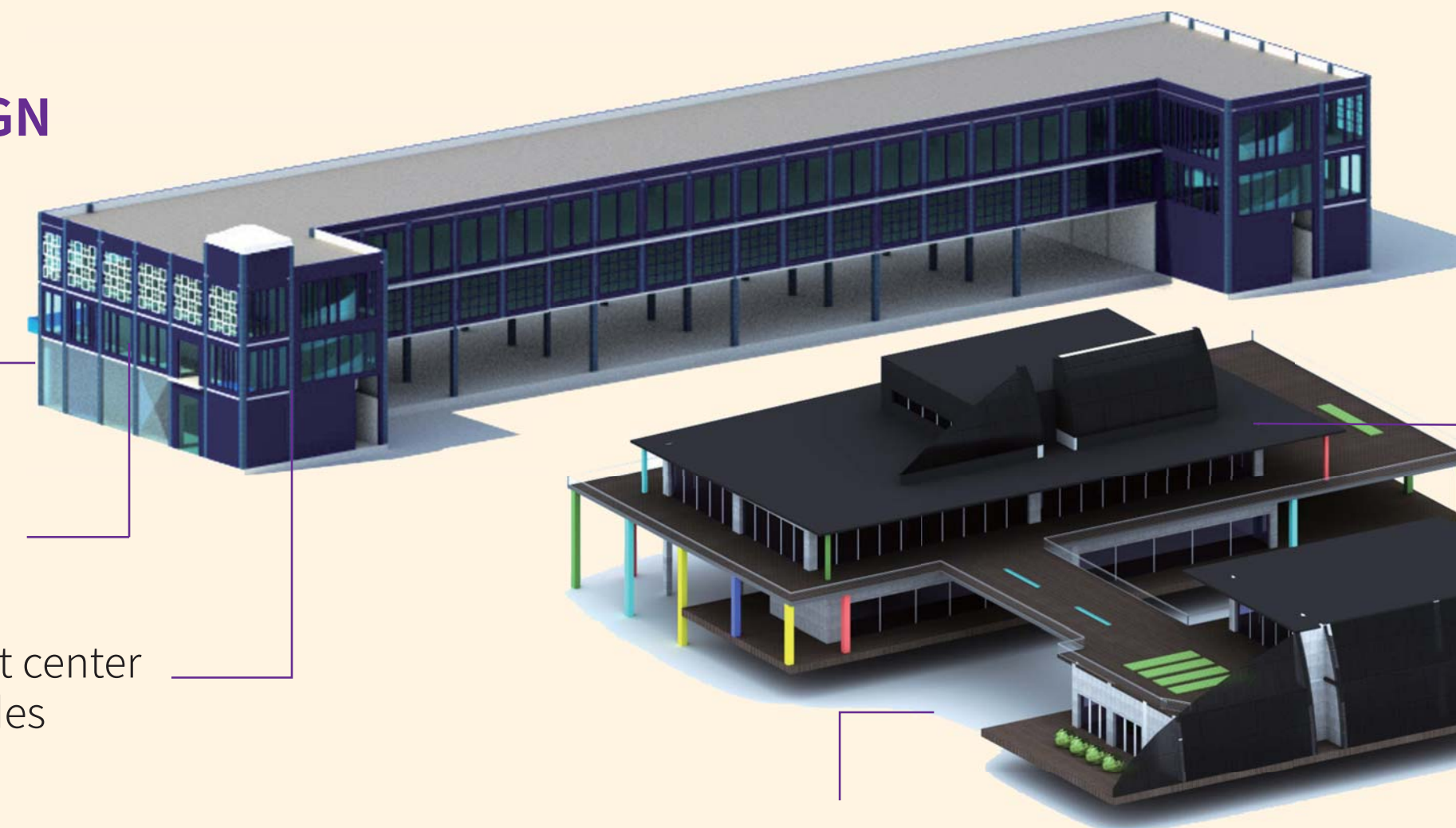
ARCHITECTURAL DESIGN

Building B

1F Local Bus
Transit Center

2F Commercial Activities
e.g. snack shops, café,
souvenir stores

3F long -distance bus transit center
Entrance and Exit at two sides



Design Concept - Barque
Keelung's Harbor icon
Development in late Qing Dynasty

Commercial Activities
e.g. snack shops, café,
souvenir stores

Building A

Kiss & Ride stop



| | |
|---|---|
| 1 | 2 |
| 3 | 4 |

URBAN DESIGN

The core urban design for pedestrians is the connecting overpass though the site and the open spaces created in between. The lack of open spaces has been a serious issue for Keelung. Therefore, we wanted to take great use of the first floors of the building in the site to provide a place for local people and tourists to stop by and take a rest. The roof greening would also add more green spaces to Keelung. Between the north station and west passenger terminal is the Historical Park, where people can learn more about the city and its past. A tourist information would also situate inside, guiding people from the past to the present.

1. historic park and the north side of the overpass
2. stores and installation art
3. the overview of the connecting overpass
4. railroad culture center and tourist information