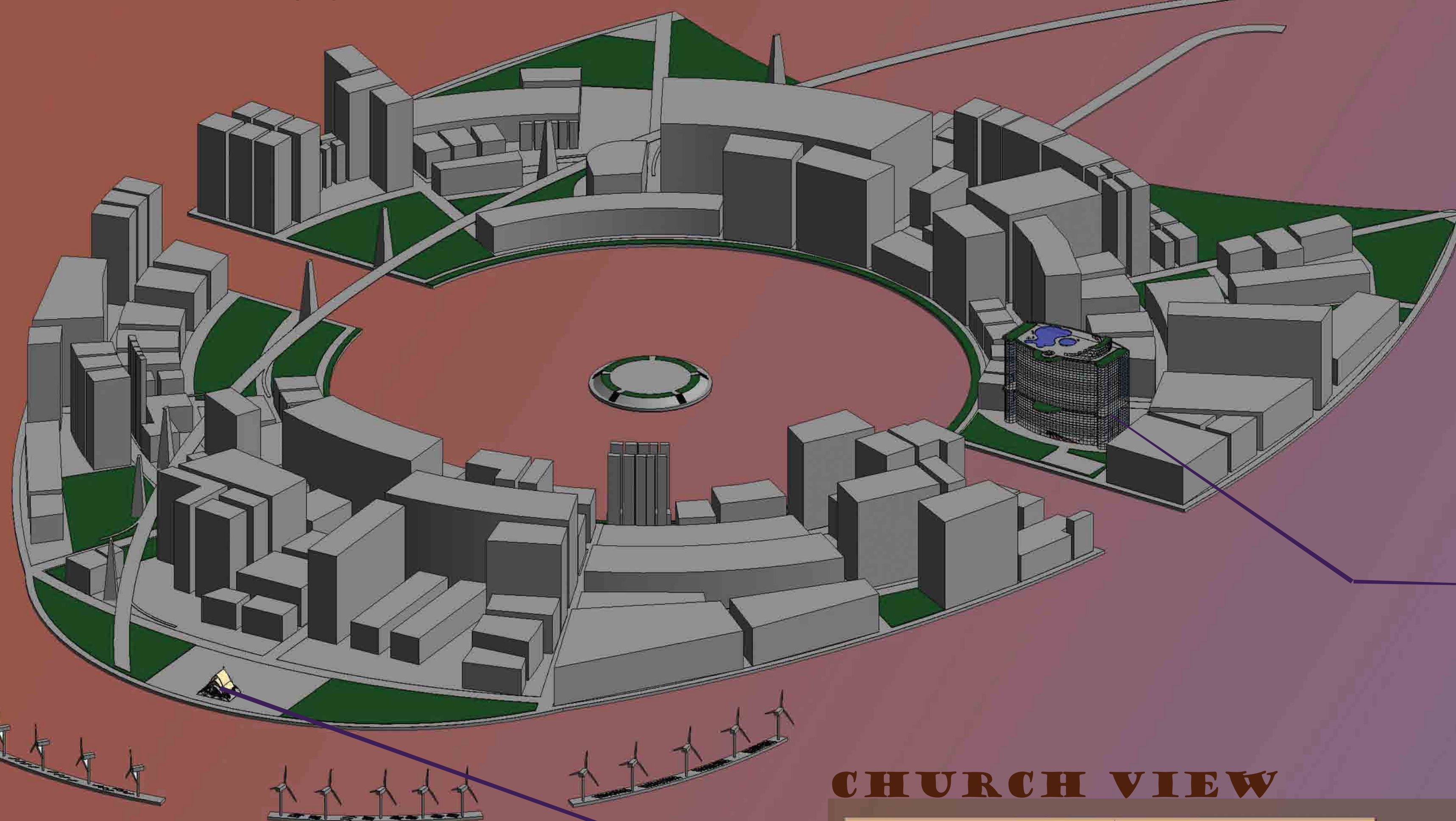
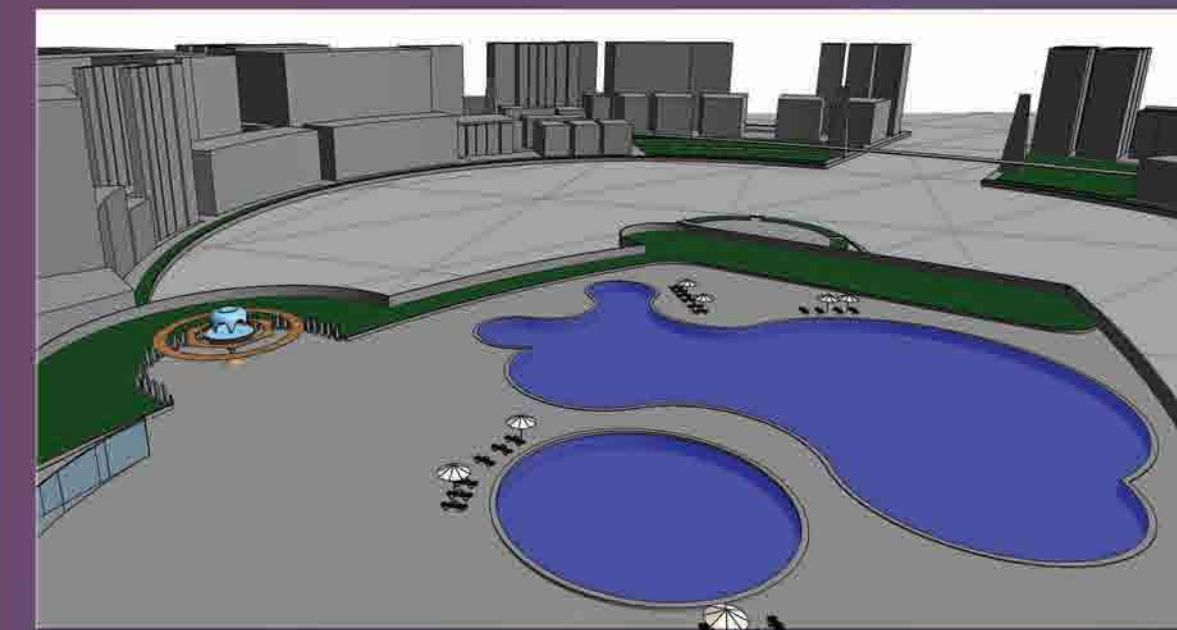


THE EYE OF TOKYO

Tokyo Eye Island is an artificial island in Tokyo, Japan on which major commercial and residential infrastructures will be constructed. The design concept for the centerpiece of the Eye is inspired by the Eye of Providence, which can be traced back to Egyptian mythology and the Eye of Horus, and also used to depict the image of God in Caodaism. This concept is used for the main outline of the island. Combined with the integration of water in the form of bridge and a central harbor, it creates highly attractive environments which can be developed to maximize the value of the mixed uses on the site.



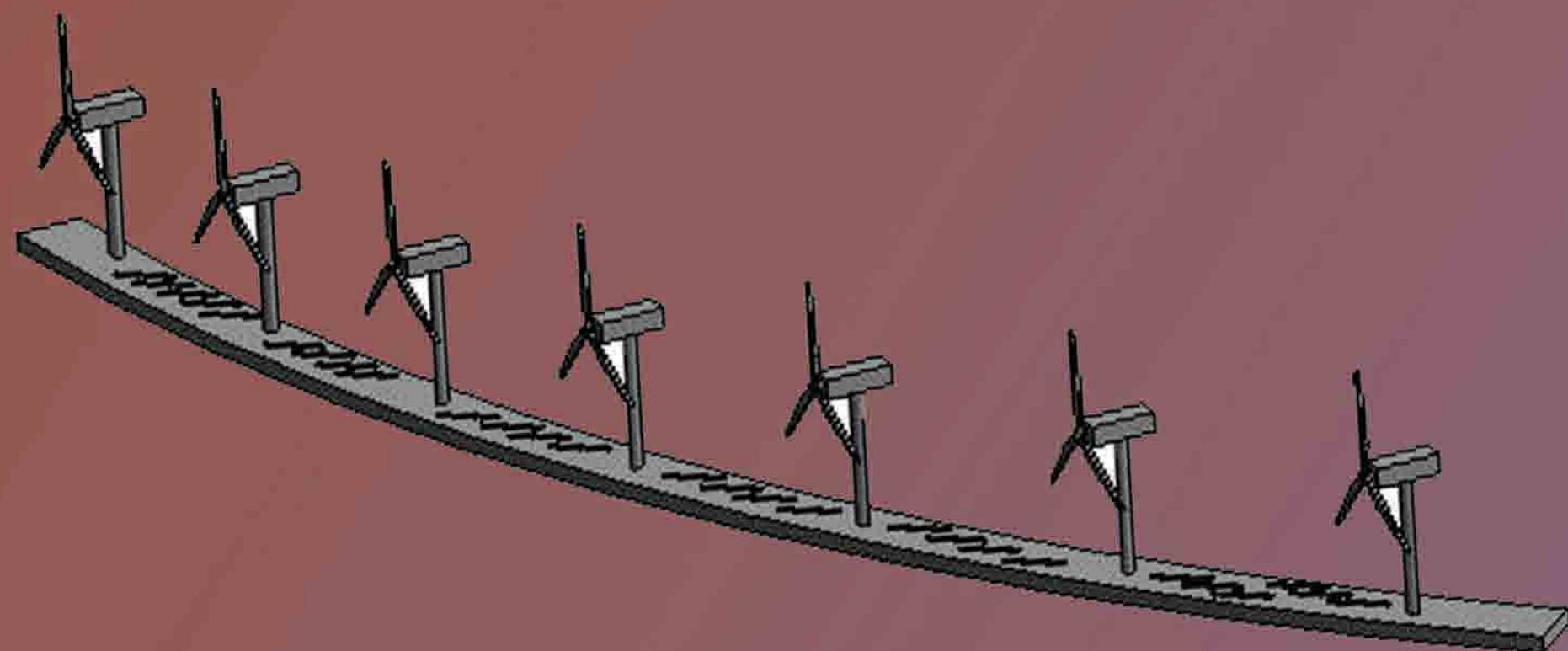
HOTEL VIEW



CHURCH VIEW



The main power of this island is derived from natural processes such as solar, wind, ocean. In the south of the island, several wind power stations will be built for providing the electricity. These natural energy sources will cut down the amount of fossil fuel used for lighting, cooking and transporting, which can help reduce carbon emissions around the world and potential climate change.



WINDMILL AND SOLAR PANEL



Urban Plan