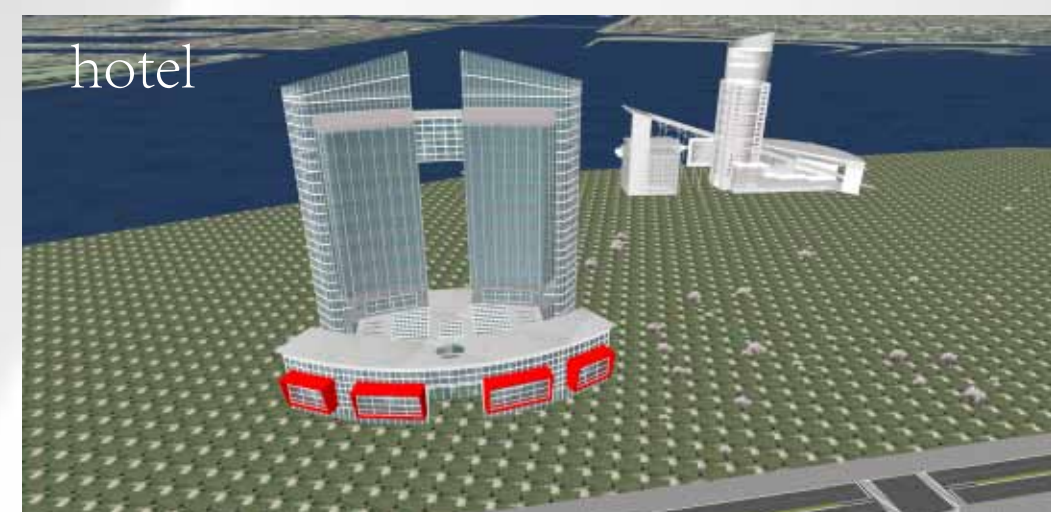




olympic island

OLYMPIC ISLAND



hotel



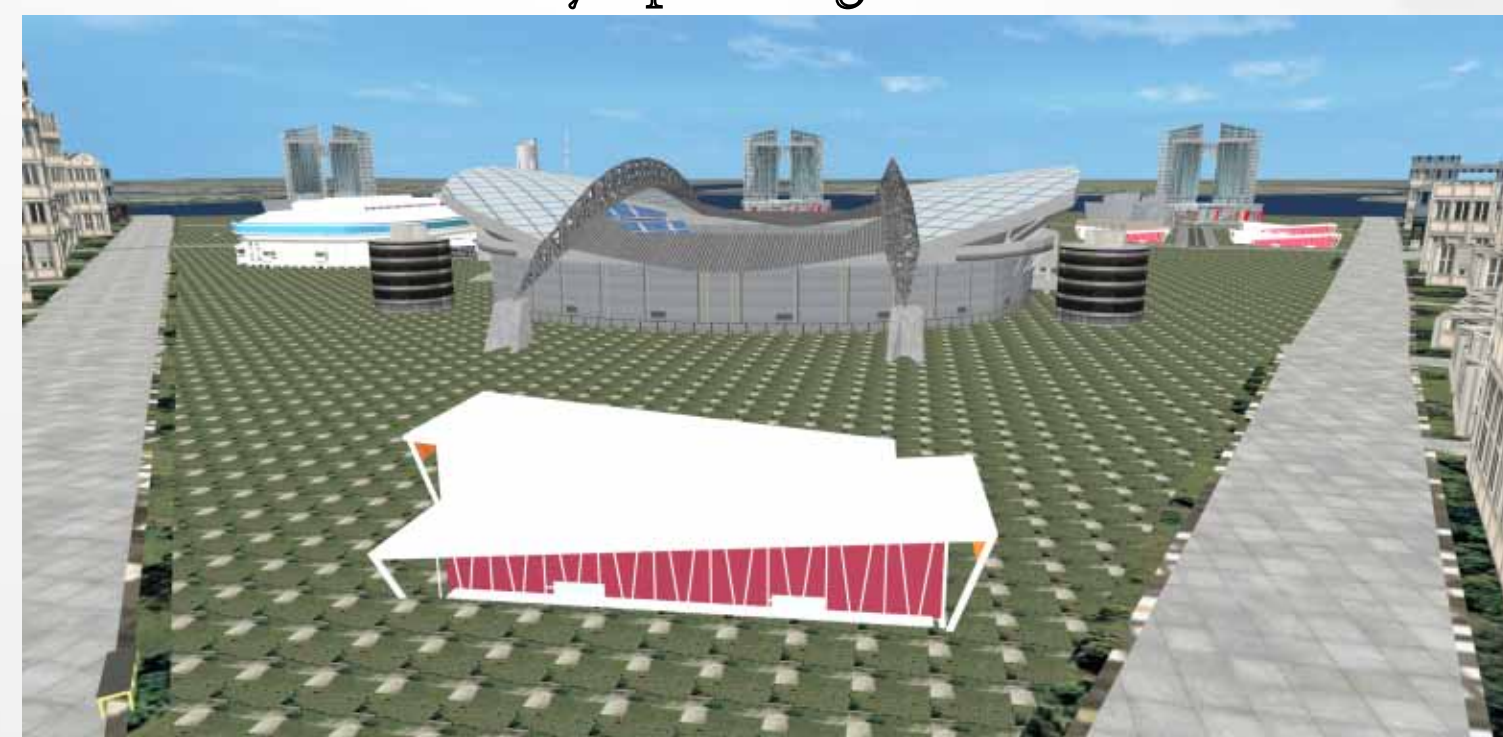
main studiom



Underwater train station
main entrauce



Olympic village



The basis of man-made island

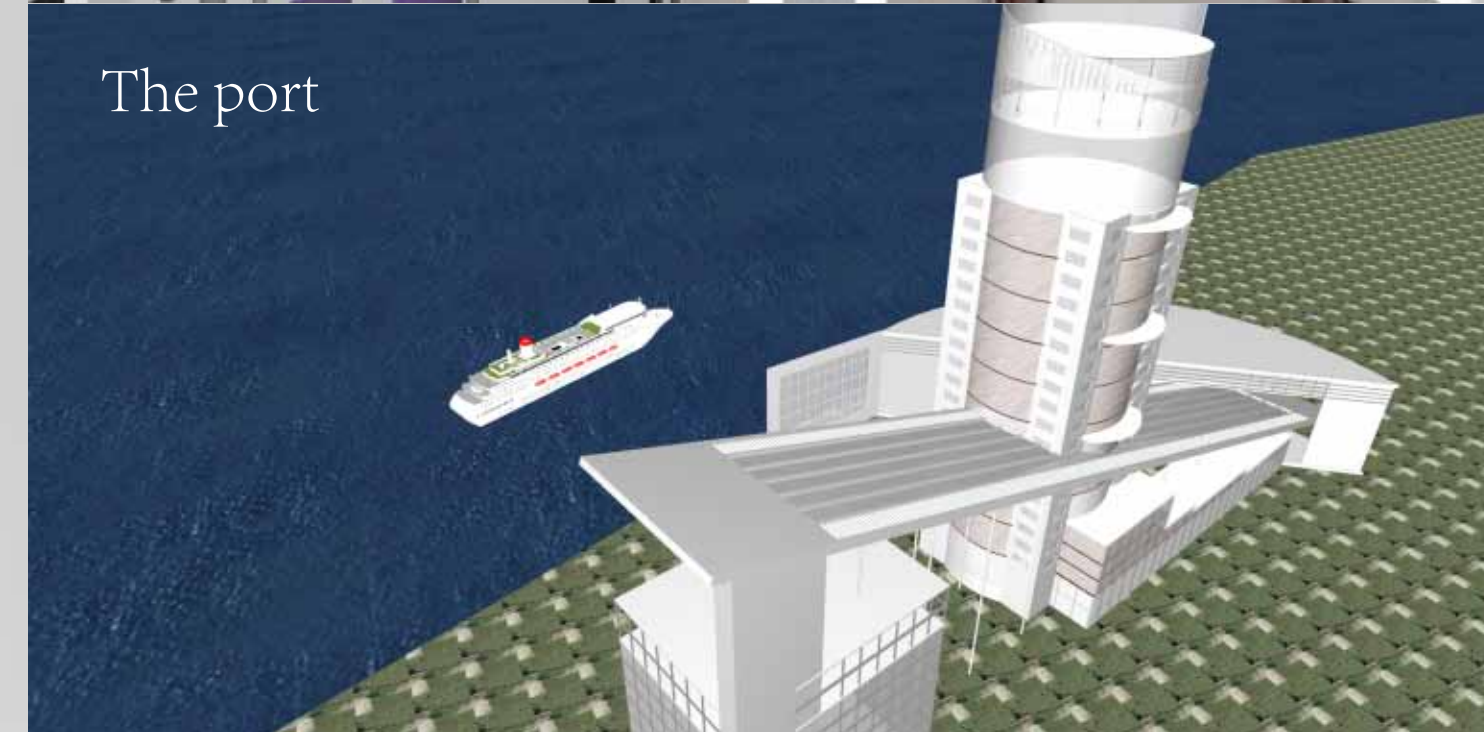
Basically I used the mega float theory in this project. Mega float is a floating big scale structure,thus I produce many big rectangle block that are connected with each other.Each of them is anchored by fixed pile. The advantage of mega float are, we don't have to use land,we can use the sea without considering about ground or the depth of water,it doesn't affect much the environment,it have the earthquake proof ability,the construction time needed to make the island is short,we can migrate the island freely,we can use the internal space,we can build many heavy structure on it without many problems,and many more.

Contents of facilities

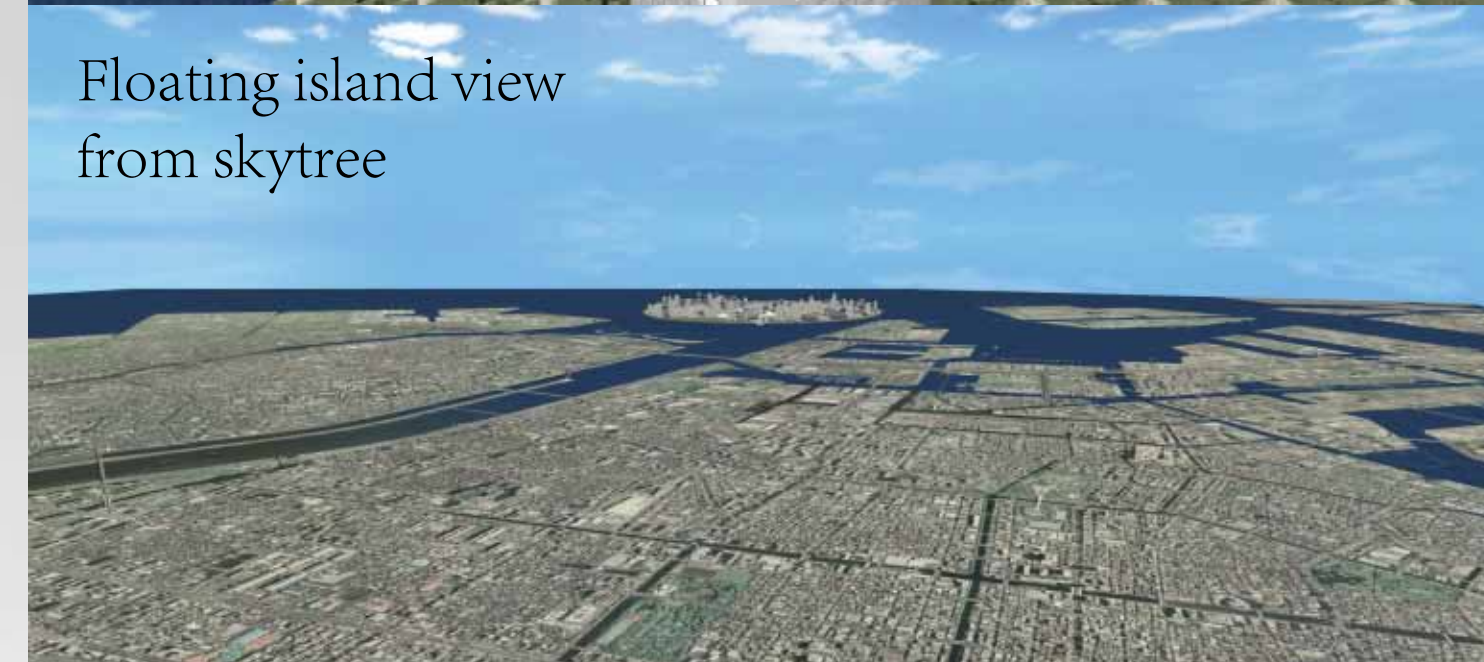
In Tokyo,if there is olympic event being held,the



Underwater train



The port



Floating island view
from skytree



Skytree view from the
floating island



Olympic village



Japan style

ground for the olympic village is none or limited.Thus I want to propose that the limited land to be compensated to the man-made island.We can build new main stadium,olympic village and hotels on the island.

Sustainable plan

We also can see other things besides olympic,for example when olympic event is finished,we can reuse the olympic ground for other purpose.For example we can change the olympic village to apartment for sale,hotels and many more.Then the main stadium can be use by the J-league soccer team,let say the Tokyo football club soccer team for their home stadium.

Access

The island can be accessed by ship and underwater train.The ship and underwater train also can be used for other purpose.For example during the opening of the olympic event,the people who are staying in the main island hotel can outlook the scenery of the sea,main stadium ,skytree and many more.The night scenery will be good also.

Furthermore they also can enjoy the sightseeing during days.For example,if they go to the Tokyo disnealand by using the ship at 10 o'clock in the morning,the 20 minutes approximately time needed for the travel will not be felt,because of the beautiful scenery of the sea.Then when they return to the hotel,they can use the underwater train and enjoy the beautiful and gorgeous scene of the underwater world.