

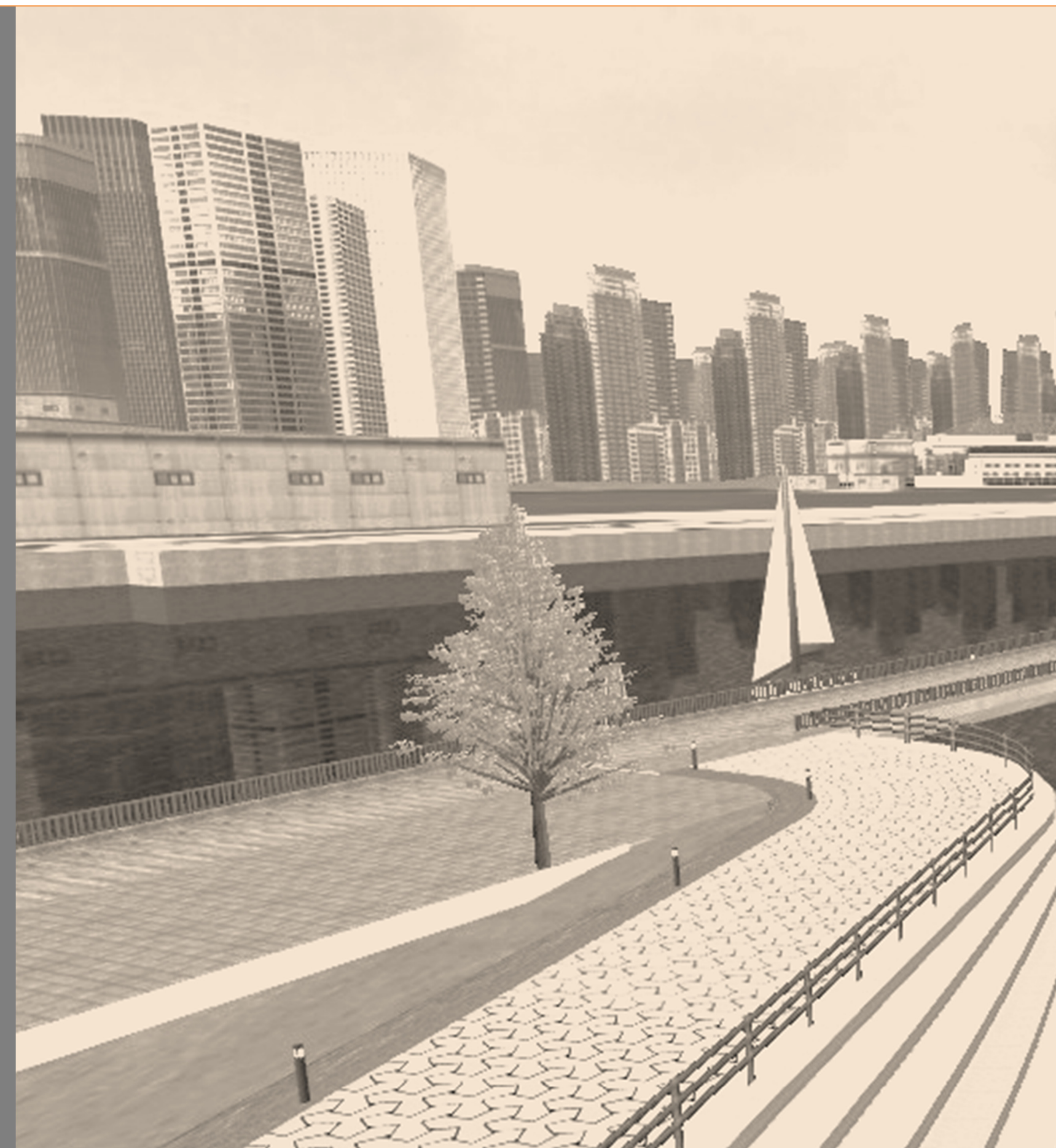


Urban Redevelopment using Water Space



Team: W.D.M. (Watershed Design
& Management, Rit's)

Software: **UC-win/Road**



Theme2016 *“Extension of the central city Melbourne”*

Introduction: living space

Humans have traditionally lived near riversides to maximize their time for relaxation. Proximity to rivers has benefitted the development of new cultures (e.g., the Ganges in India). It is important to construct space for relaxation at Fisherman's Bend in Melbourne, where a modern business district has been developed. The construction of this space will entail the redevelopment of the Yarra riverfront.



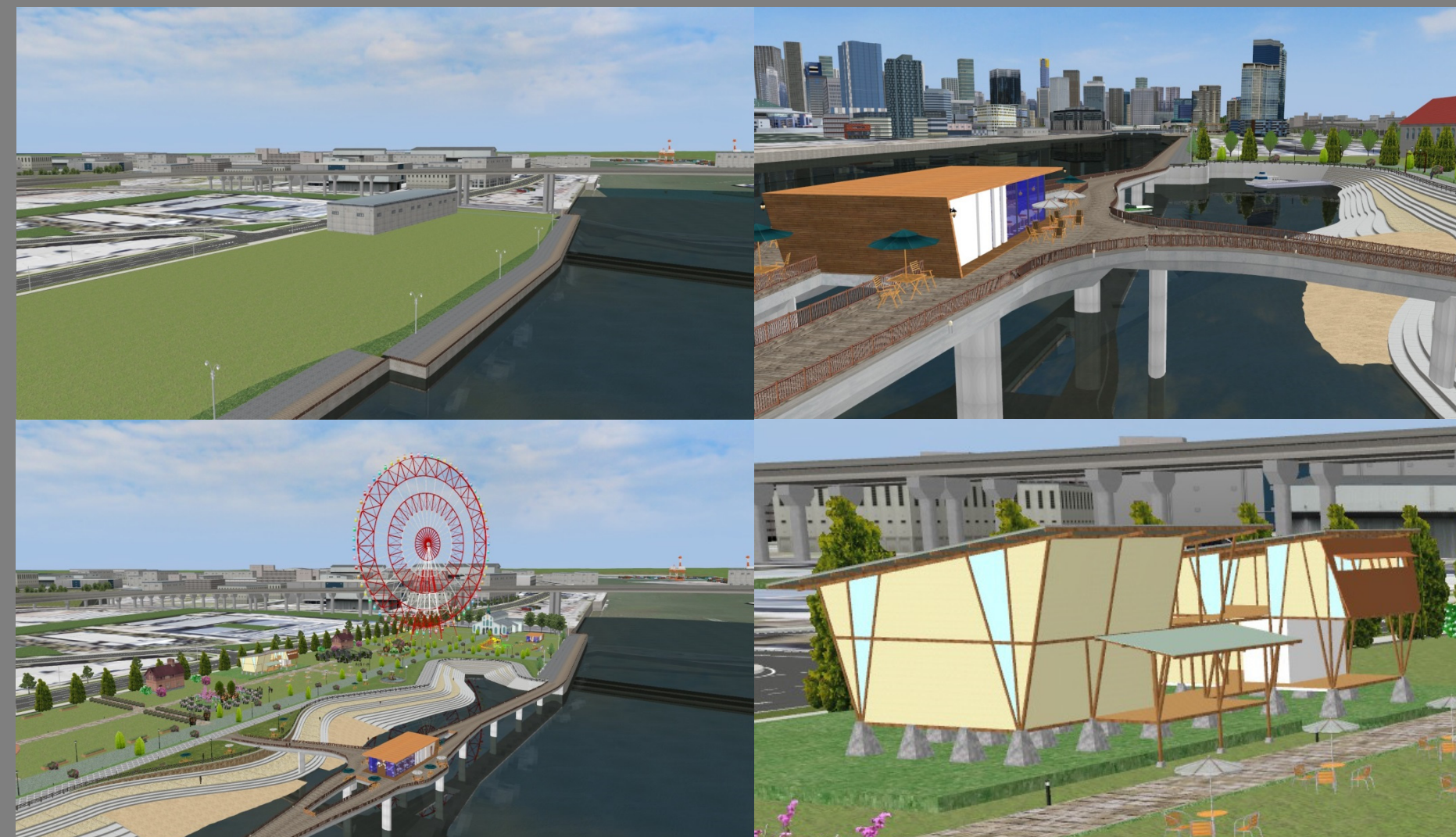
1. People who live along the Ganges river in India.
2. Fisherman's Bend in Melbourne from the sky.
3. Water contamination in the Yarra river.

Concept: boating on the river

The development of this district has similarities with that of waterfront culture in the United Kingdom. Our riverfront design draws inspiration from the view of the river Thames.

4. Image of our planned design.

4



Construction: hydrophilic riverfront

We present a plan to redevelop the riverfront for relaxation. However, further work will be needed to enhance the prosperity of the area, given the poor water quality on the Yarra River caused by drainage from living areas and factories.



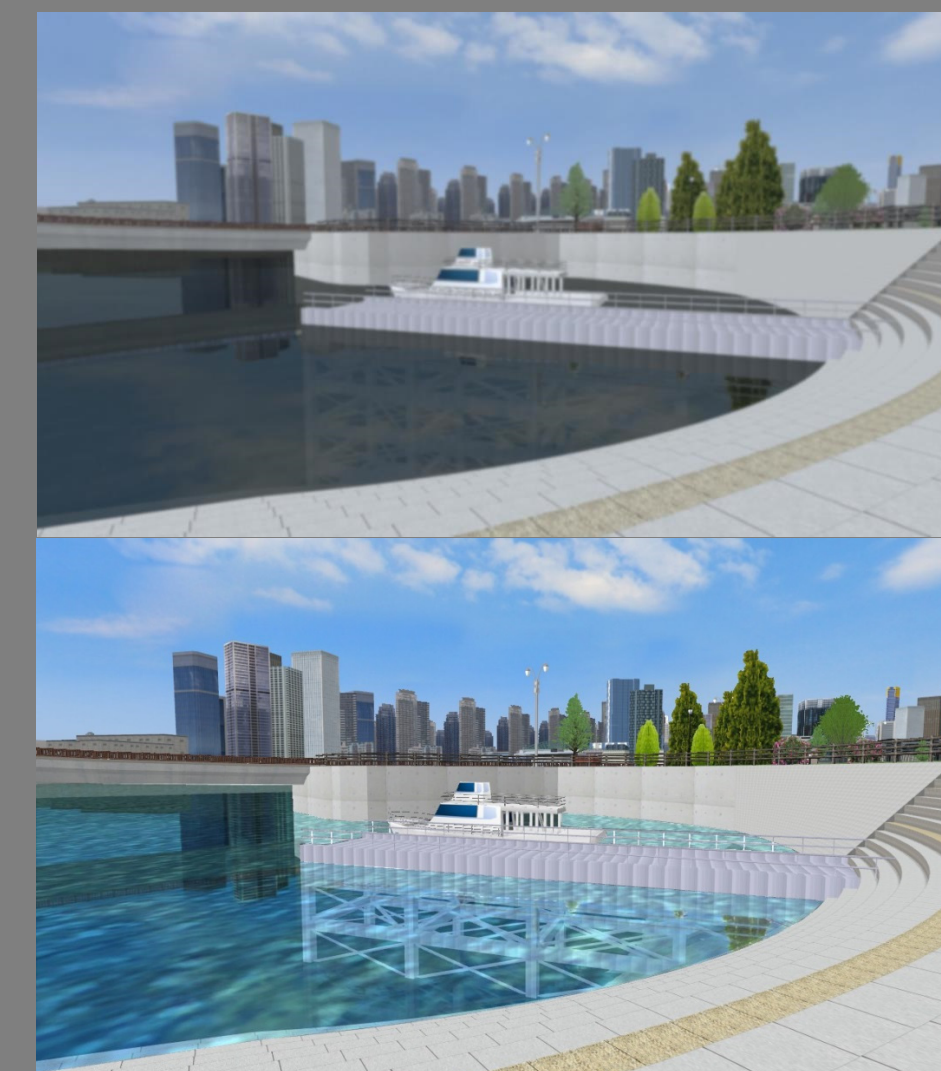
5. Before redevelopment.
6. After redevelopment (same spot).
7. Café restaurant on the bridge.
8. Public hall.

Proposition: water purification

We propose purifying the water of the Yarra River alongside the redevelopment. In Japan, many successful cases of water purification have been reported, and a number of measures to address pollution problems have been implemented.



9. Before water purification.
10. After water purification.



Prosperity: project effect

After improving the water quality, many people will gather and enjoy themselves on the redeveloped riverfront.



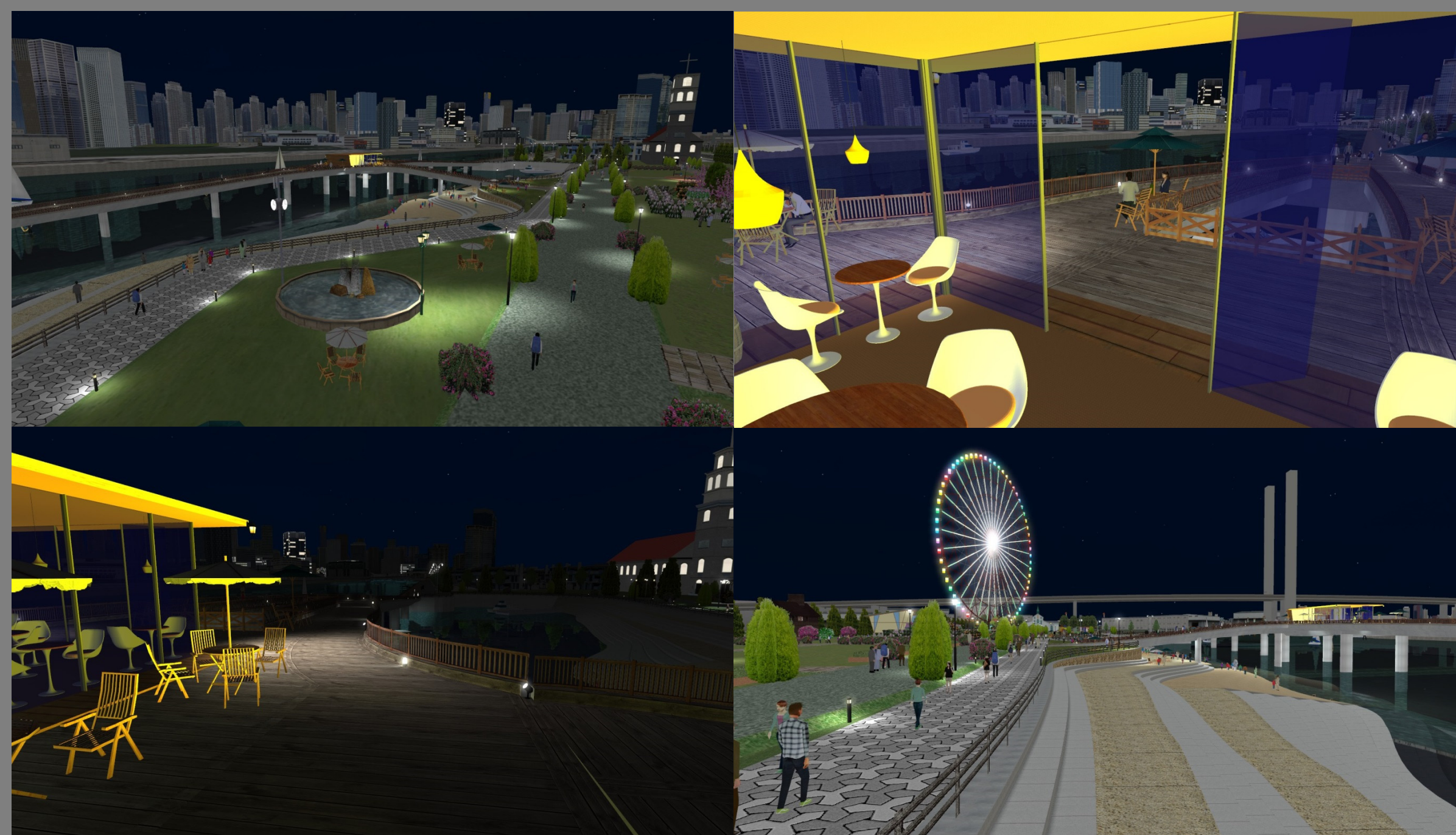
11. Office workers enjoying lunch.
12. Cruising by yacht.
13. Families enjoying themselves.



Consideration: night scene

The new development will be open until midnight as well as during the day. Therefore, an illumination plan is required so that the redeveloped area can be seen.

14. Illumination for walking in the park
15. Illumination of the café restaurant
16. Night view from the inside
17. Ferris wheel view



Discussion: future work

For purposes of relaxation, the living space must be in a healthy environment; in this regard, therefore, the water quality must be improved. However, the water purification project will be difficult without cooperation from residents of the river basin. Therefore, we propose to publish an explanation of the water purification project using VR (Virtual-reality tool; e.g., UC-win/Road).