

OLD MCDONALD'S VERTICAL FARM

As a growing Melbourne seeks to provide new housing stock, it consumes nearby agricultural land that traditionally fed the city. This means new sources of produce must be located further away, increasing the carbon footprint of the Melbourne relating to food production, and removing a connection between people and what they eat. Our team returns food production to being central to city life.

VERTICAL FARM

Vertical Farming involves combining modern technology with agriculture. Each of the three towers will house different types of produce, all grown through gravity fed hydroponics. Each floor is double heighted, fully water-proofed, and electronically monitored to ensure maximum yields and minimum waste. Additional features include climate controlled floors, mobile bee hives for targeted pollination, complimentary plantings to reduce pest invasion, mirrored walls to reflect lighting, rooftop solar powered panels to offset power consumption, and onsite water filtration and recycling system. The vertical farm will produce food for wholesale, retail and local restaurant consumption. Importantly, the vertical farm will extend beyond the building and into nearby public spaces, creating a greater connection between people and what they eat.

SKY-BRIDGES

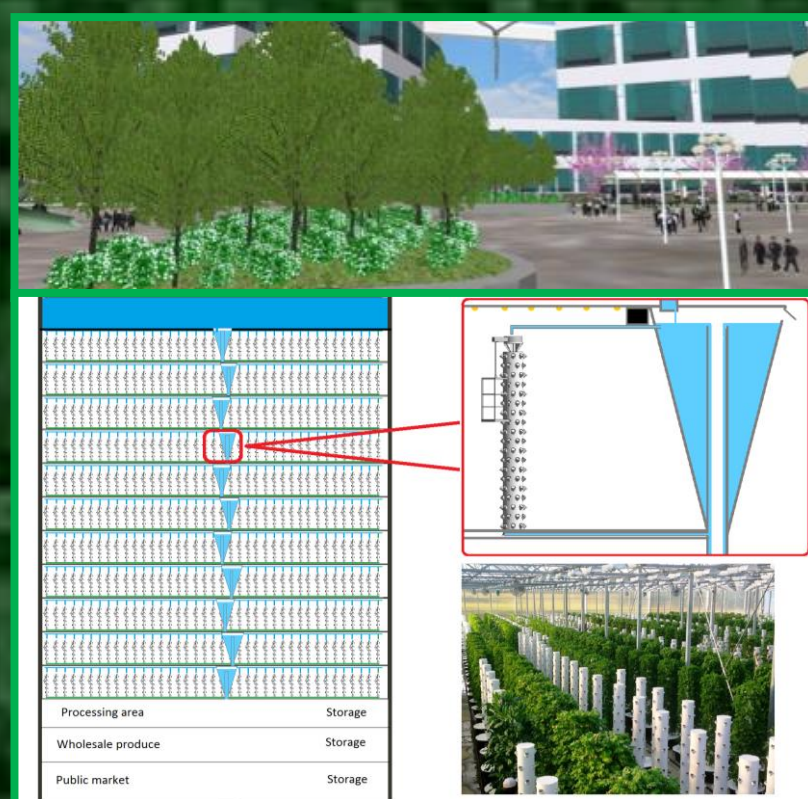
Lorimer will encourage collaboration with sky bridges connecting offices to the research hub, and the vertical farm to the modern STEM (Science, Technology, Engineering and Mathematics) and agricultural high-school. These bridges encourage engagement and collaboration with interests that share common ground and provides opportunity.

LIVING GREEN

There will be a strong focus on green technology throughout Lorimer. Beyond a large network of rooftop solar panels, a combination of permaculture and passive solar design principles will be implemented. Dense tree plantings will be either native to the region, or fruit producing and maintained by the Vertical Farm.



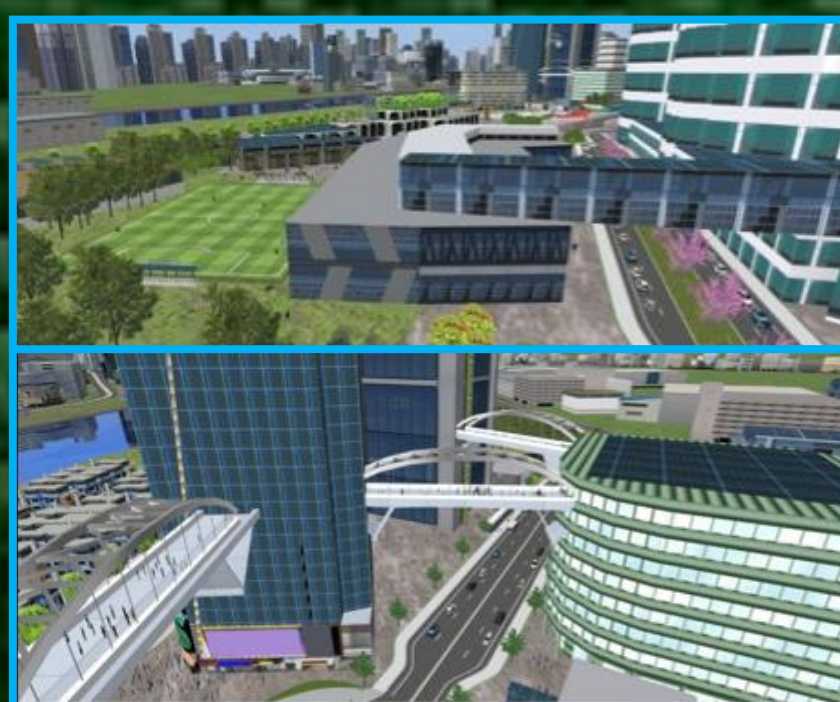
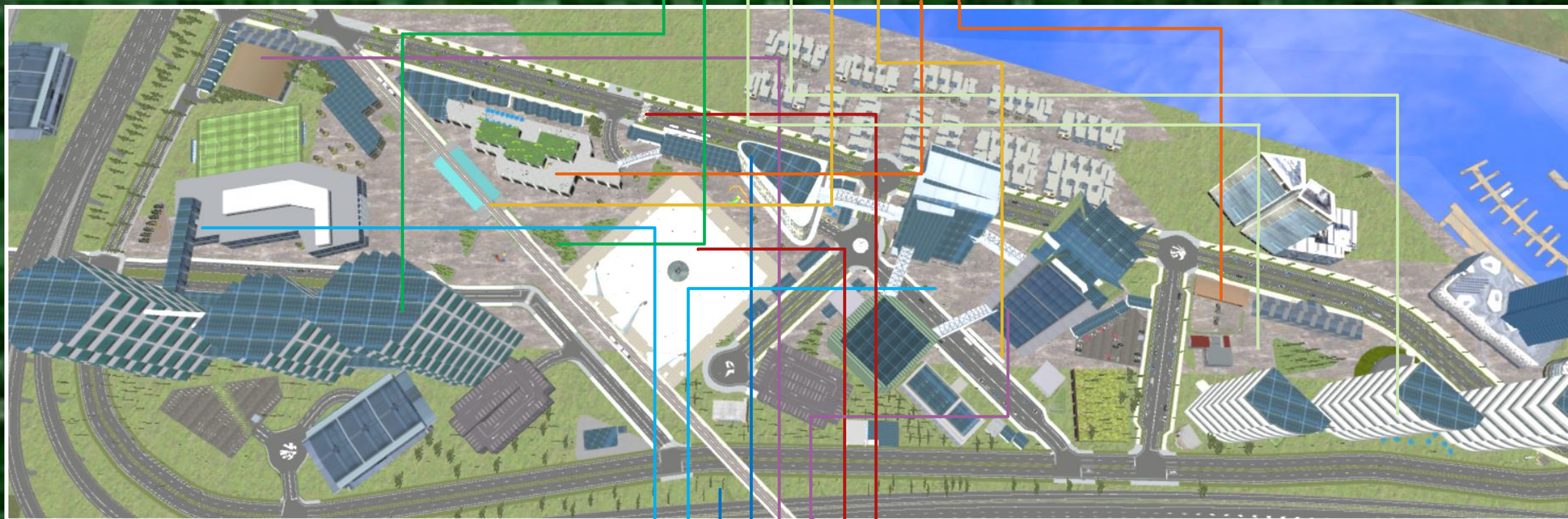
Modern Apartments



Complimentary Living Amenities

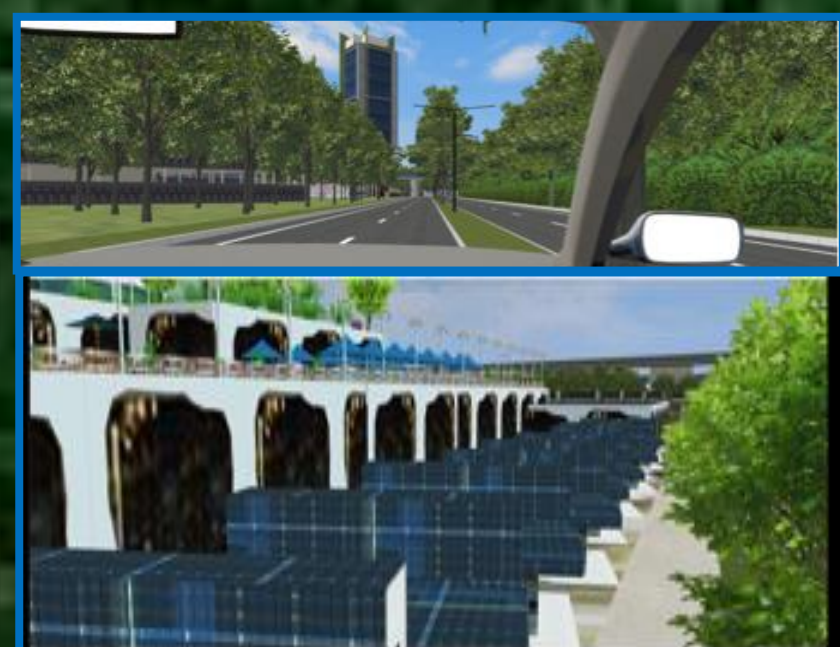
Farmable Public Gardens

Sustainable Vertical Farm



Sky-bridge to Agricultural School

Sky-bridges between Office and R&D Centre



Dense Native Plant

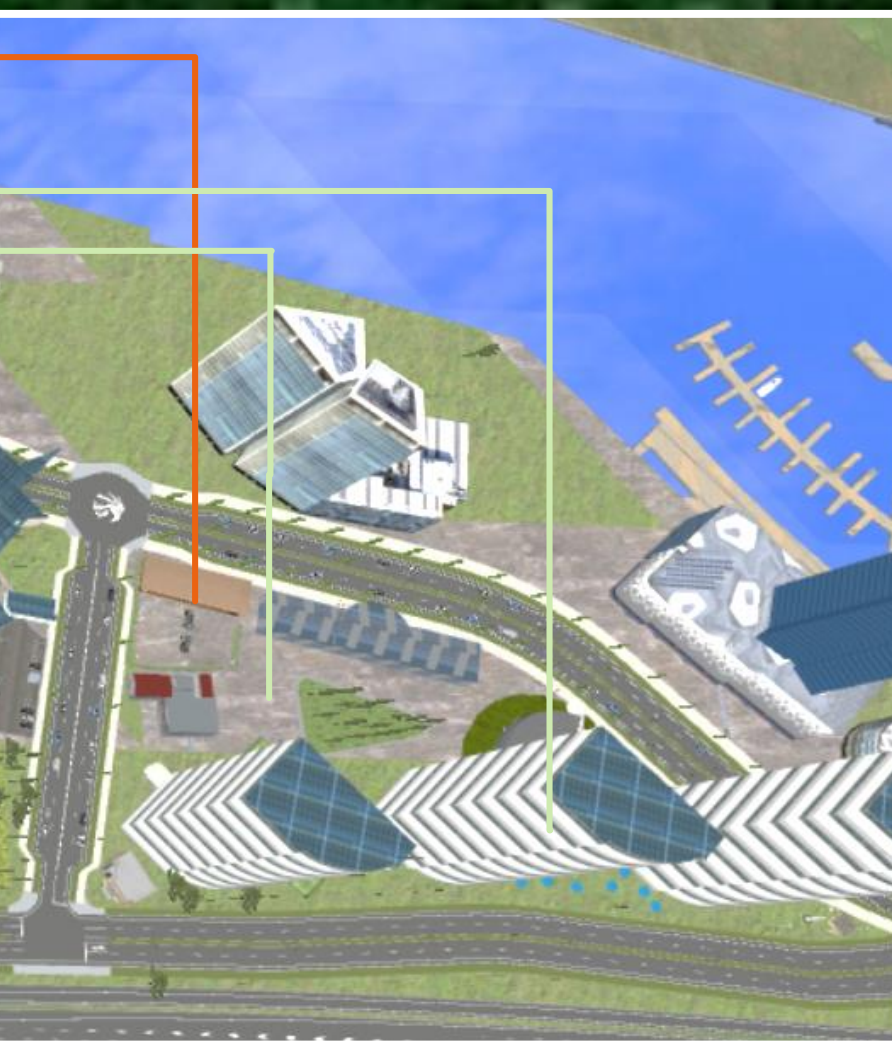
Solar Panelled Roofs

Light Rail Station

Bus Terminal

Retail and Restaurants

Pubs and Bars



Connection to Yarra River

Public Square with Light and Water Feature

Research and Development Centre

Collaborative Office Space

Entrepreneur Centre



LIGHT RAIL AND TRANSIT

The pre-existing and dis-used Industrial rail line will be converted to a new Light-rail line, and this will be continued along Ingles street, where it will connect to the existing Light-rail network at Montague Station, increasing the walkability of the area. There will be a network of bike and foot paths, a bike exchange, and Lorimer will also connect to the public bus network. The McDonald Road will divert traffic away from Lorimer Street, giving easy pedestrian access to the Yarra River.

RESTAURANTS AND RETAIL

Shopping will be located along Lorimer street. The top floor will be open to the public with wrap around views for dinners of all types, including a public bar, children's play equipment, fine dining and casual dining.

PUBLIC SPACE

Lorimer's open public space will be a great location for festivals and gatherings. The square will have numerous places to sit, with views of a public play area. On summer evenings, there will be a light, water and music show that offers a point of interest for all users of the space. A shadow wall will be located along the side of Ingles street bridge which allows people to explore their own created shadows.

MODERN INTERACTIVE OFFICE SPACE

Offices located in Lorimer will have shared open spaces within the building and additional lobbies along access points to the sky-bridges. This will create opportunities for different businesses to gather and collaborate with each other over a common idea, and technology will be available throughout the buildings to facilitate the sharing of these ideas. Offices will have vertical green walls internally and externally, but also wherever feasible there will be internal fruit and vegetable producing plants in all shared spaces. These miniature farms will be monitored by the office users, but the maintenance and harvesting will be done by the vertical farm team. Entrepreneurs will have access to facilities that assist in launching their ideas into market.