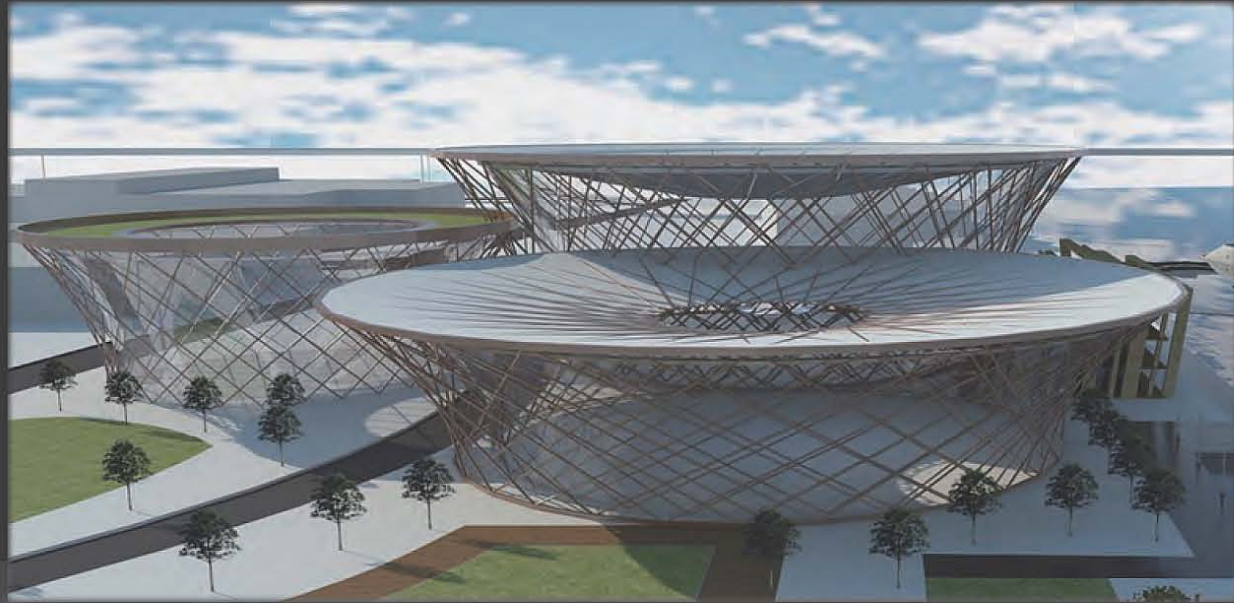


--The 6th Virtual Design World Cap-- MELBOURNE RIPPLE

INTRODUCTION

The Lorimer precinct is part of the Fishermans Bend Urban Renewal Area of Melbourne. It's located between Yarra River and the West Gate Highways. Such a geographical location doesn't allow Lorimer to have a proper transportation system and has to intercept it into two. To connect the transportation system and territory of Lorimer with its surrounding, we tried to change the pattern of the highway so that road and green land can be expanded wider. Also, main buildings of Lorimer was served as transit station for yacht and other public transports.

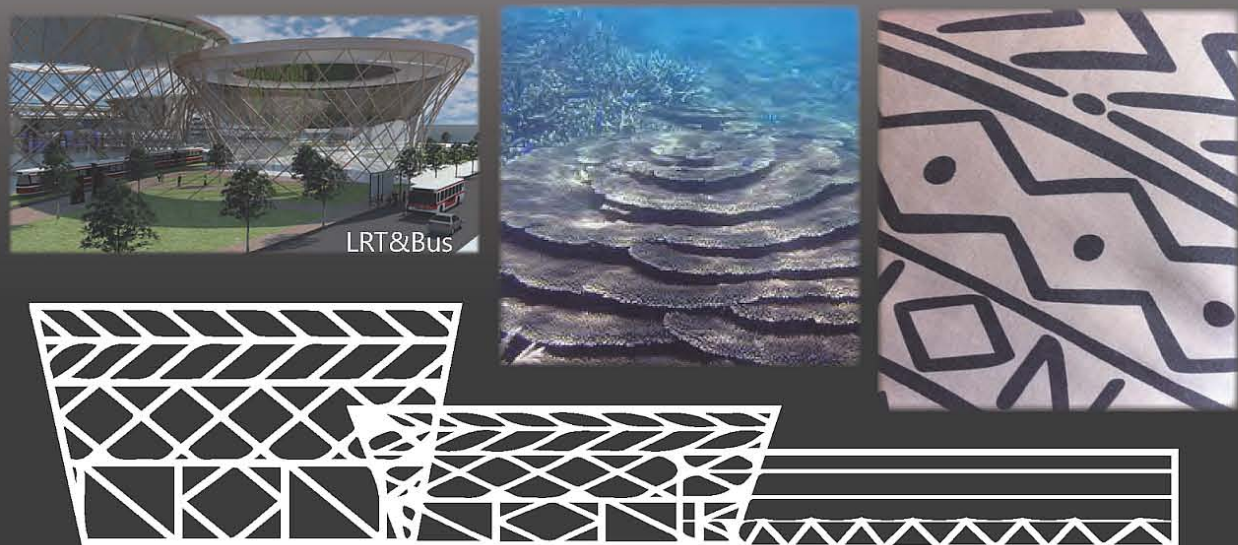
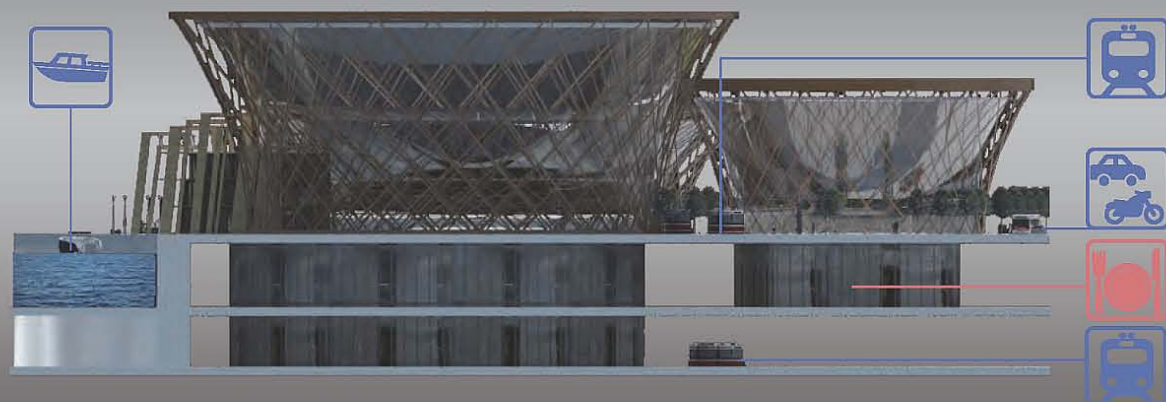
Exterior design of the transit station combined the totem of aboriginal and the imagery of coral reefs as the design concept. Greed land and trees were planted for energy saving and carbon reduction.



DESIGN CONCEPT:

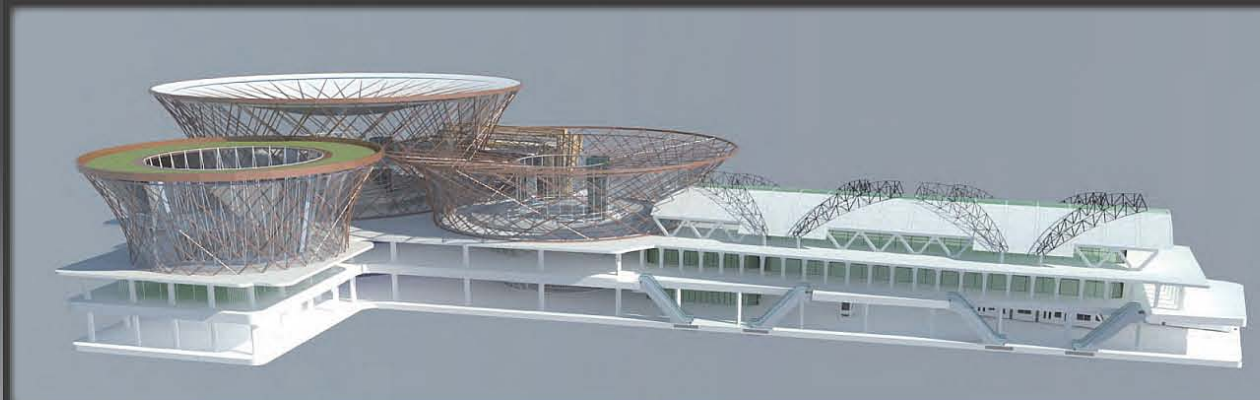
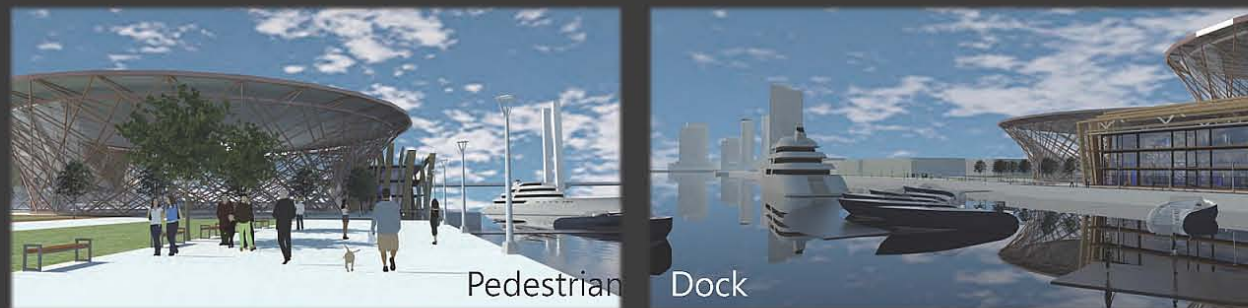
The Lorimer precinct is part of the Fishermans Bend Urban Renewal Area of Melbourne. It's located between Yarra River and the West Gate Highways. Such a geographical location doesn't allow Lorimer to have a proper transportation system and has to intercept it into two. To connect the transportation system and territory of Lorimer with its surrounding, we tried to change the pattern of the highway so that road and green land can be expanded wider. Also, main buildings of Lorimer was served as transit station for yacht and other public transports.

Exterior design of the transit station combined the totem of aboriginal and the imagery of coral reefs as the design concept. Greed land and trees were planted for energy saving and carbon reduction.



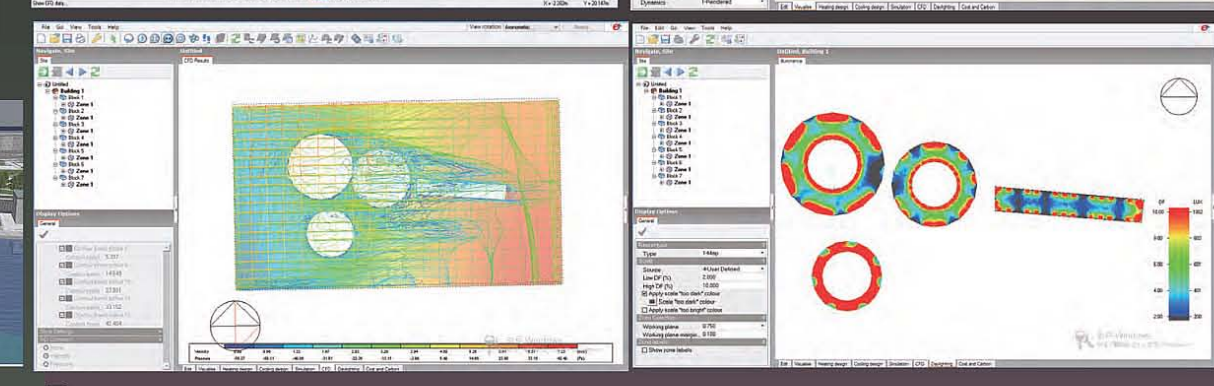
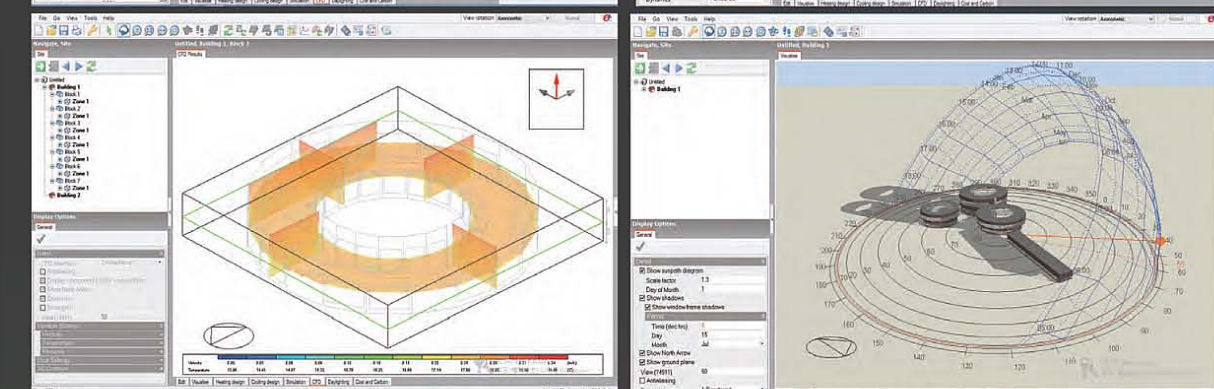
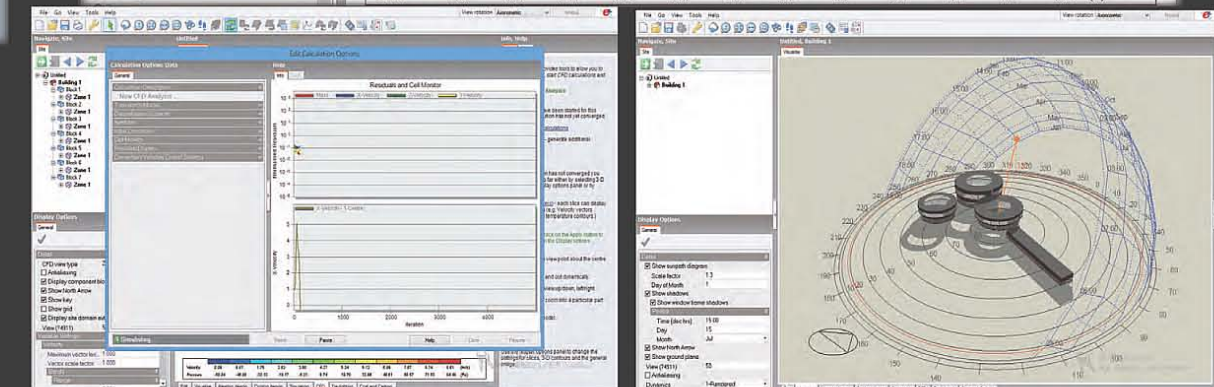
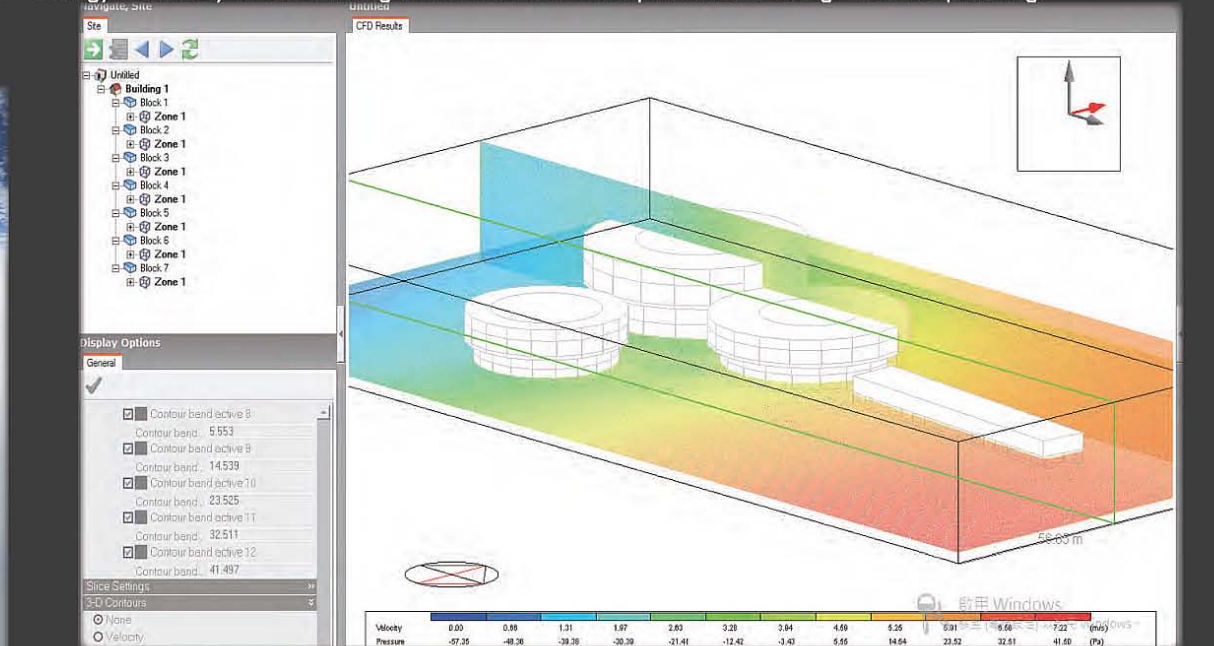
FUNCTIONALITY:

To test the function performance of transit station that we had designed, we used UC-WIN/ROAD software to simulate the changes of flow of road and pedestrian after the transit station was built. We also analyzed the function performance of this building as a transit station through visual simulation from a yacht when sailing on Yarra River.



SUSTAINABILITY & ECOLOGY:

We planed to use Designbuilder software for the daylighting, shadow and CFD simulation and analysis of energy efficiency of the building, in accordance with open window and green land planning.



PREVENTION:

In this project applied software such as Xpswmm, UC-WIN/ROAD to simulate what truly happened to stormwater system, foul water system of floodplain when waters flowed in Melbourne for the purpose of analyzing possible disaster relief.

