

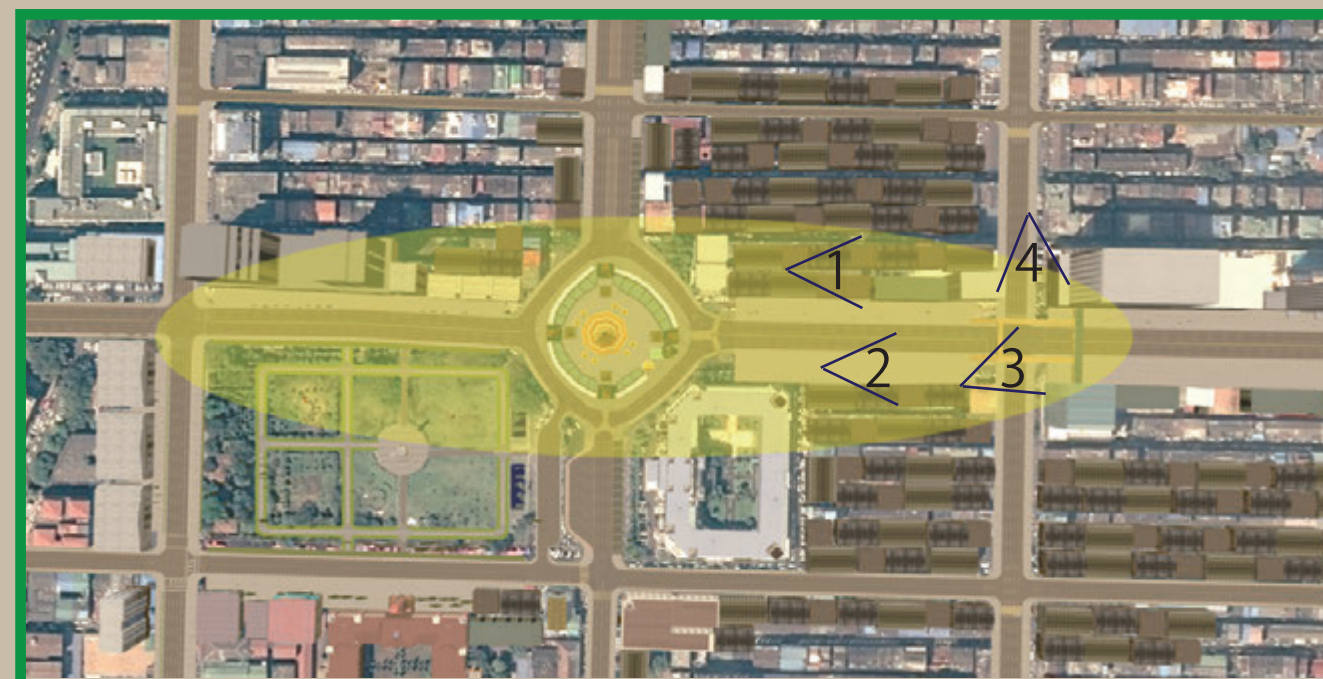
# healthy city

Yangon is full of problems.  
We treat Yangon by planting and achieve the healthy city that it is easy to walk



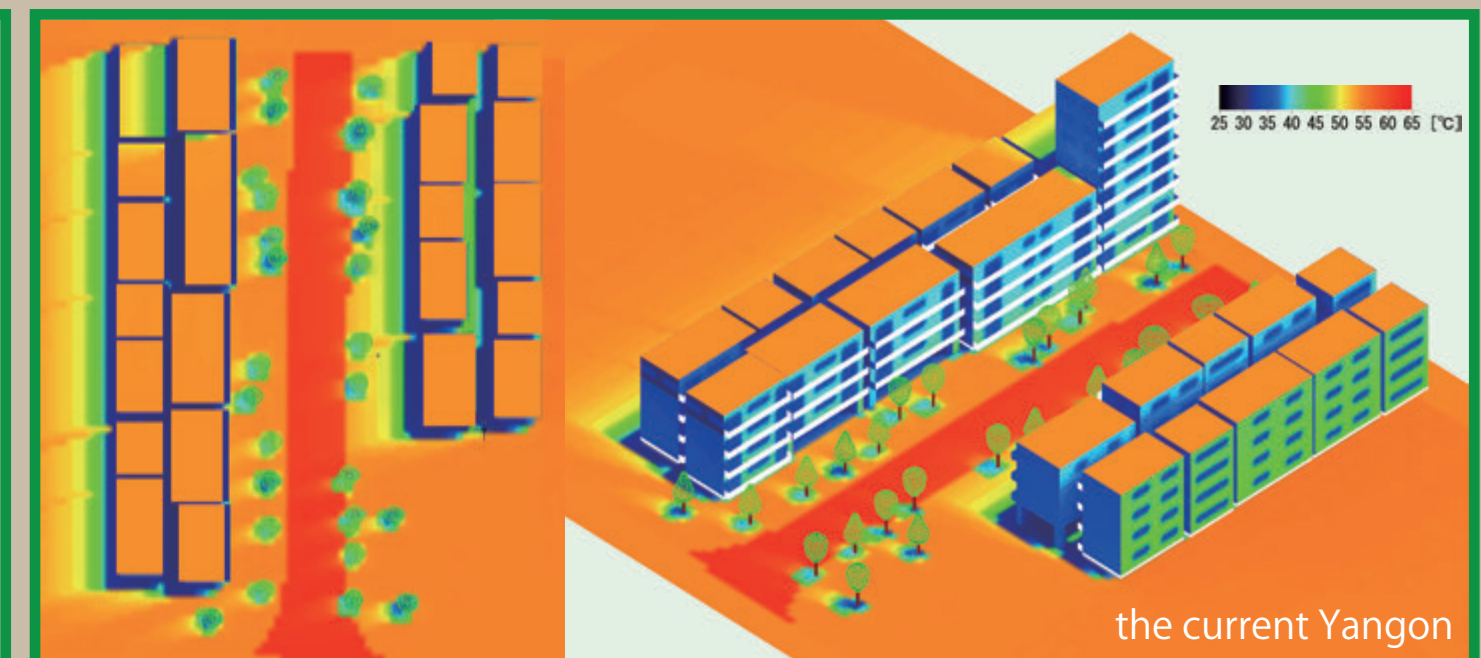
## Main Concept ~ the walking space where people want to walk ~

In the current state of Yangon there are also problems from the viewpoint of traffic such as traffic congestion. It is considered that one of the problems is that the area of the road and the sidewalk is ambiguous as the pedestrian crosses the roadway or the car parks on the sidewalk. Therefore, planning the pedestrian deck with a sidewalk incorporating green for main streets with high traffic volume, Suleley Street, and defining the walking space where people want to walk. Clear definition of sidewalks will make people aware of more traffic rules and lead to a reduction in traffic accidents. In addition, we create relationships between green and cities, connections between people and people, and communication between people and nature. We aim to make a sustainable city growing with the natural environment.

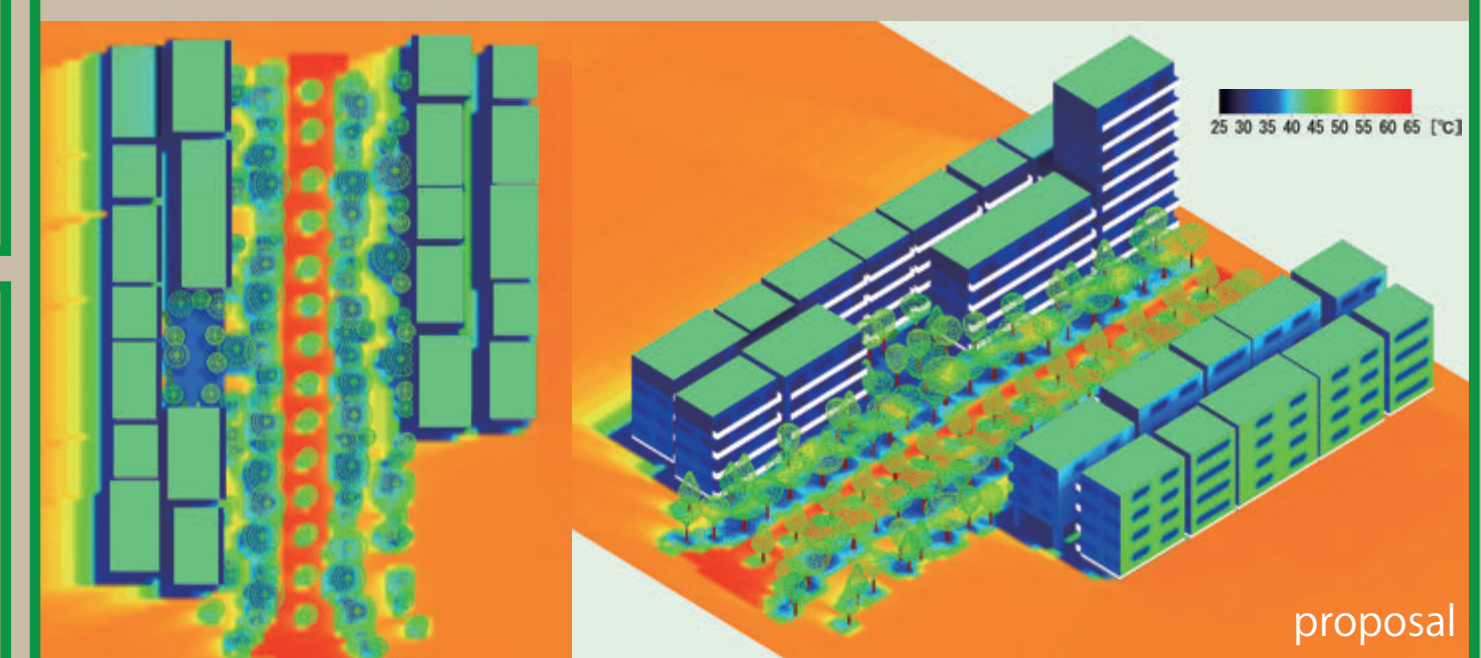


## Thermal Analysis

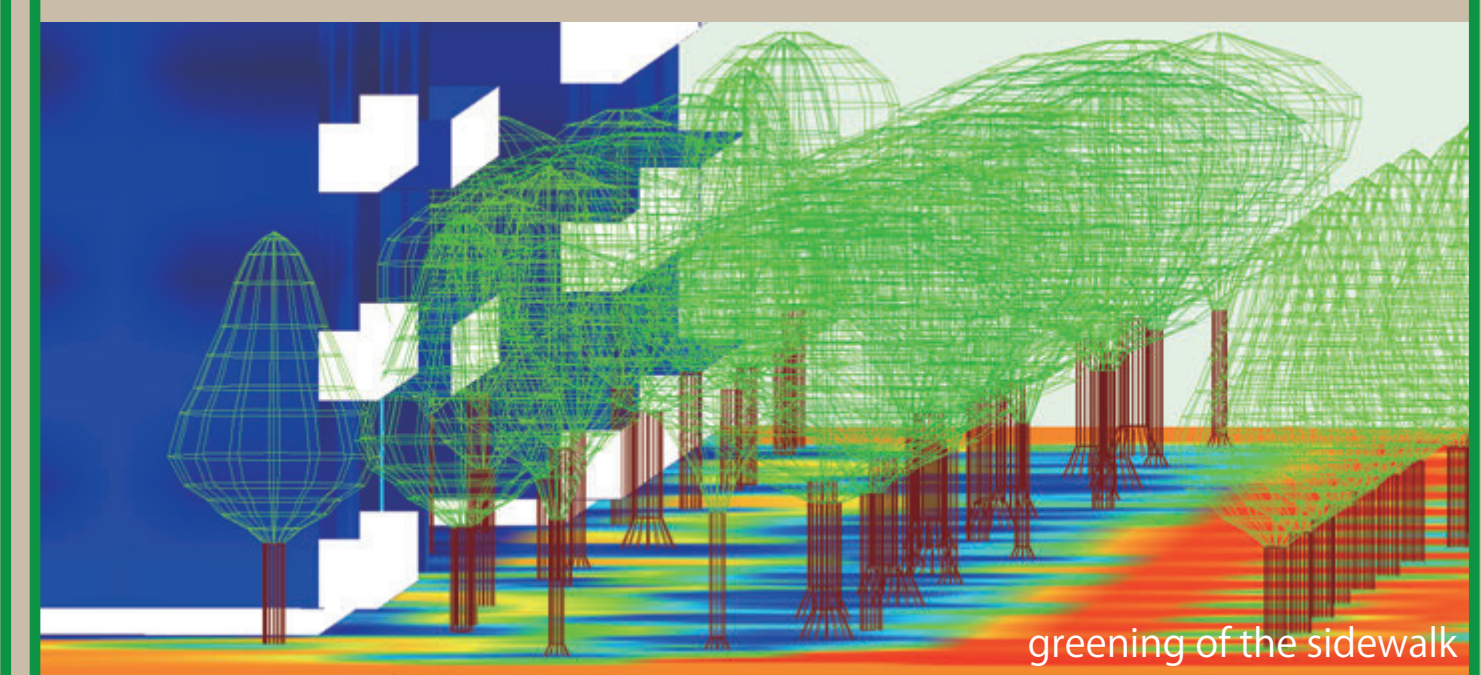
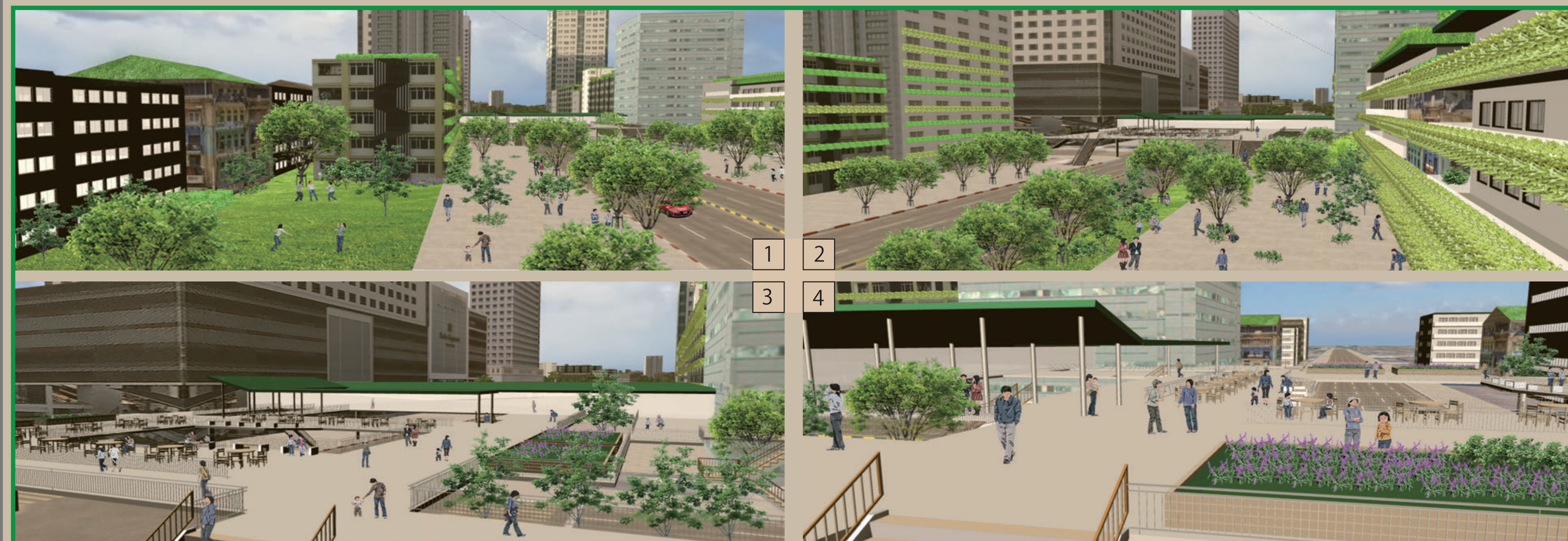
Consider thermal environment using thermal environment simulation and plan the planting of sidewalks where pedestrians can create a cool and comfortable space. We compared "the current Yangon" and "the Yangon which roof and wall greening and incorporation of water-retaining paint and greening of the sidewalk" on the surface temperature.



the current Yangon



proposal



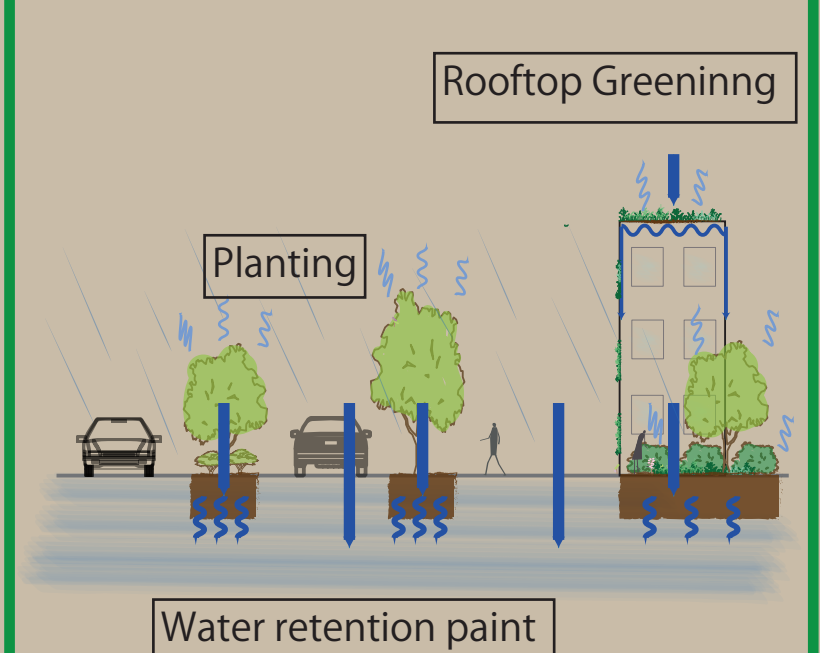
greening of the sidewalk

## Greening Concept

Flooding occurs frequently in Yangon, because there are concentrated torrential rains in the rainy season. Although the city is developing due to rapid economic growth, infrastructure is not catching up, and measures for those are necessary. Therefore, we will revitalize the natural water circulation function in the city and try solving environmental problems. We propose incorporating green into the city.

We will incorporate rooftop greenery, wall greening, planting, water retention paint into the city of Yangon and regain the function of nature that was lost by artificialization of the surface covering. It is a proposal for solving environmental problems such as heat island phenomenon as well as flood damage.

## natural water circulation function



Rooftop and wall greening can delay the descent of rainwater to the ground surface and reduce the amount of inflow to the surface. Water retention paint and planting can improve the drainage function and suppress the rise in road surface temperature by utilizing the heat of evaporation of water retained.