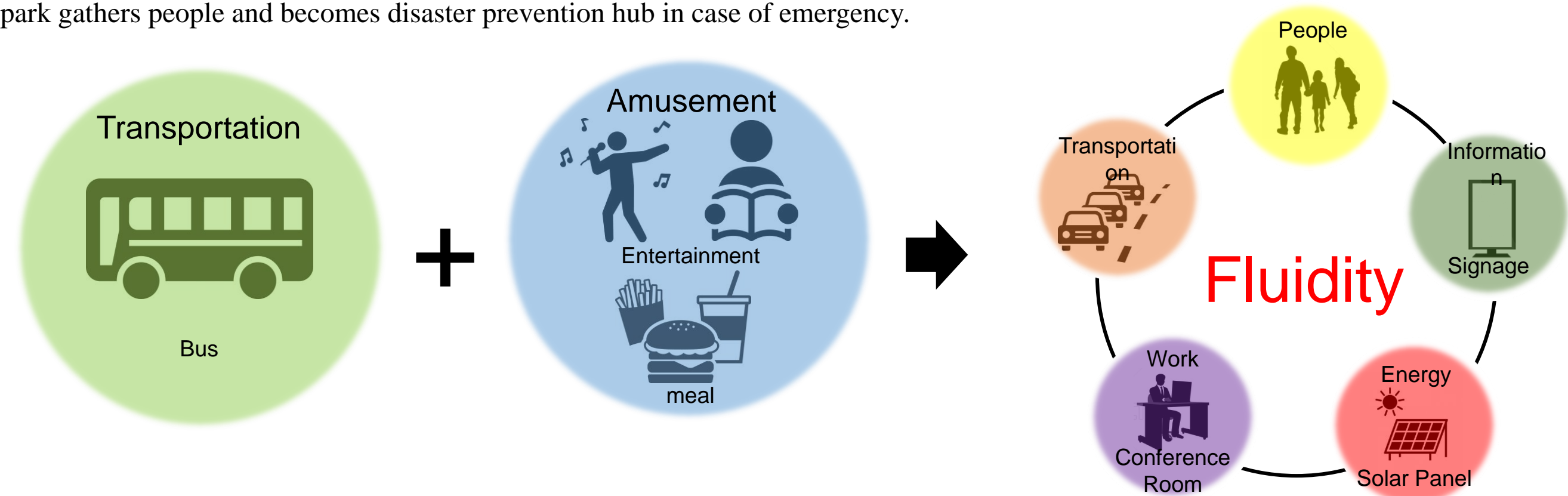


RELIEF NEST

An aerial perspective of the Relief Nest development. The central feature is a large green park area with a complex network of reddish-brown paths. A prominent, irregularly shaped pond is situated in the upper right of the park. The park is bordered by a multi-lane road on the left and a highway on the right. In the foreground, a modern building with a curved, white and red roof is visible. The background shows a dense urban environment with various high-rise buildings.

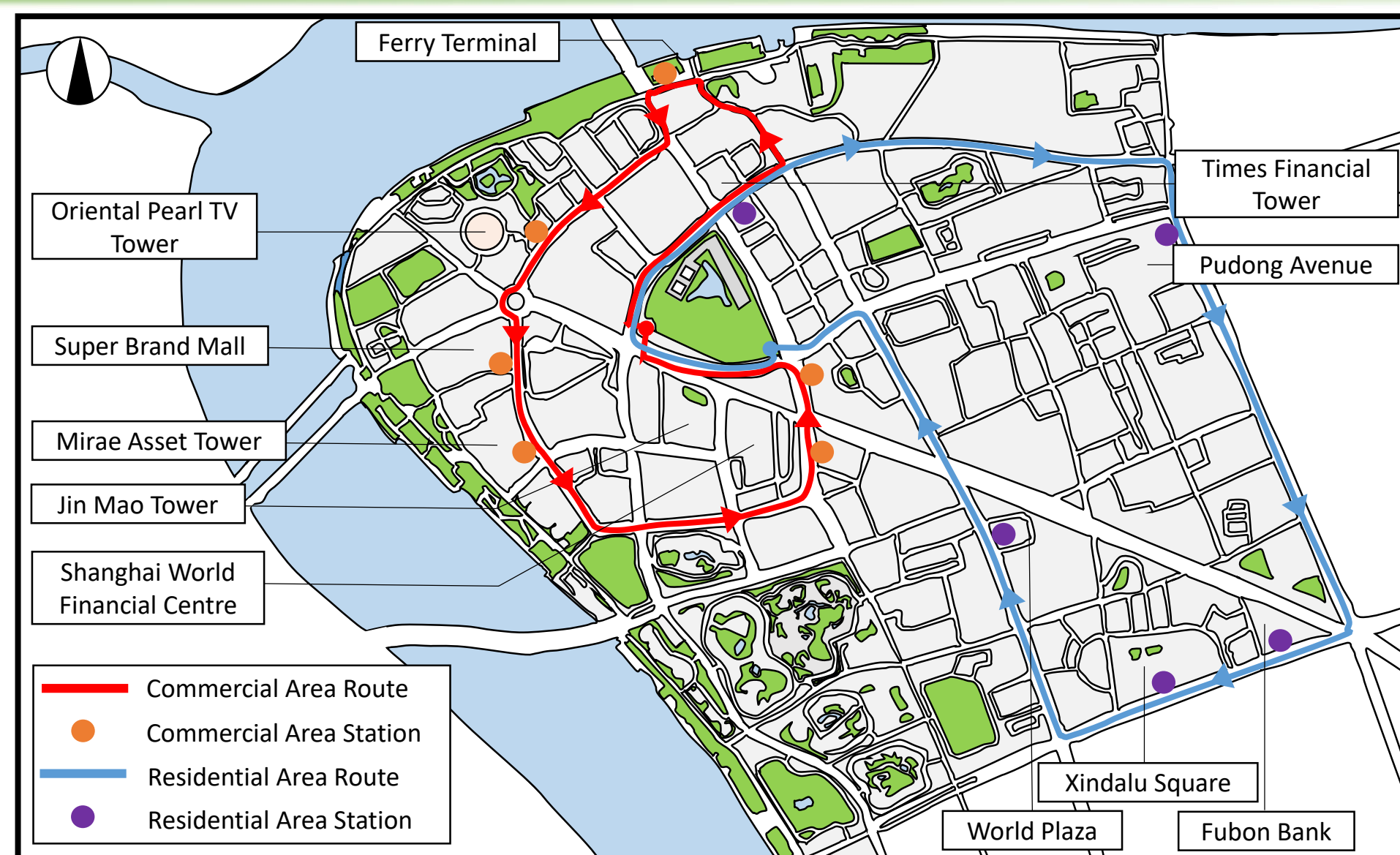
CONCEPT

Shanghai Pudong is known as a futuristic city and has been grown rapidly. We propose further development of this futuristic city and making the sustainable city. Since the transportation facilities such as subway and share cycle were used during the field survey, the commercial area was very lively. On the other hand, there was a disparity between the commercial area and the residential area. Also, the positions of bus station are unclear, it is difficult for tourists to use the bus and we felt that there are few rest areas and amusement facilities. Therefore, we planned the operation “Shared Bus” which circulates in Pudong and “Shared Bus” that incorporate elements of amusement into transportation to make people easy to use. In addition, people can know bus operation information and disaster information at the bus stations. We aim to promote the fluidity of information, transportation and people and encourage the use of public transportation. And Lujiazui Central Green Space makes it the center of this fluidity, and this park gathers people and becomes disaster prevention hub in case of emergency.

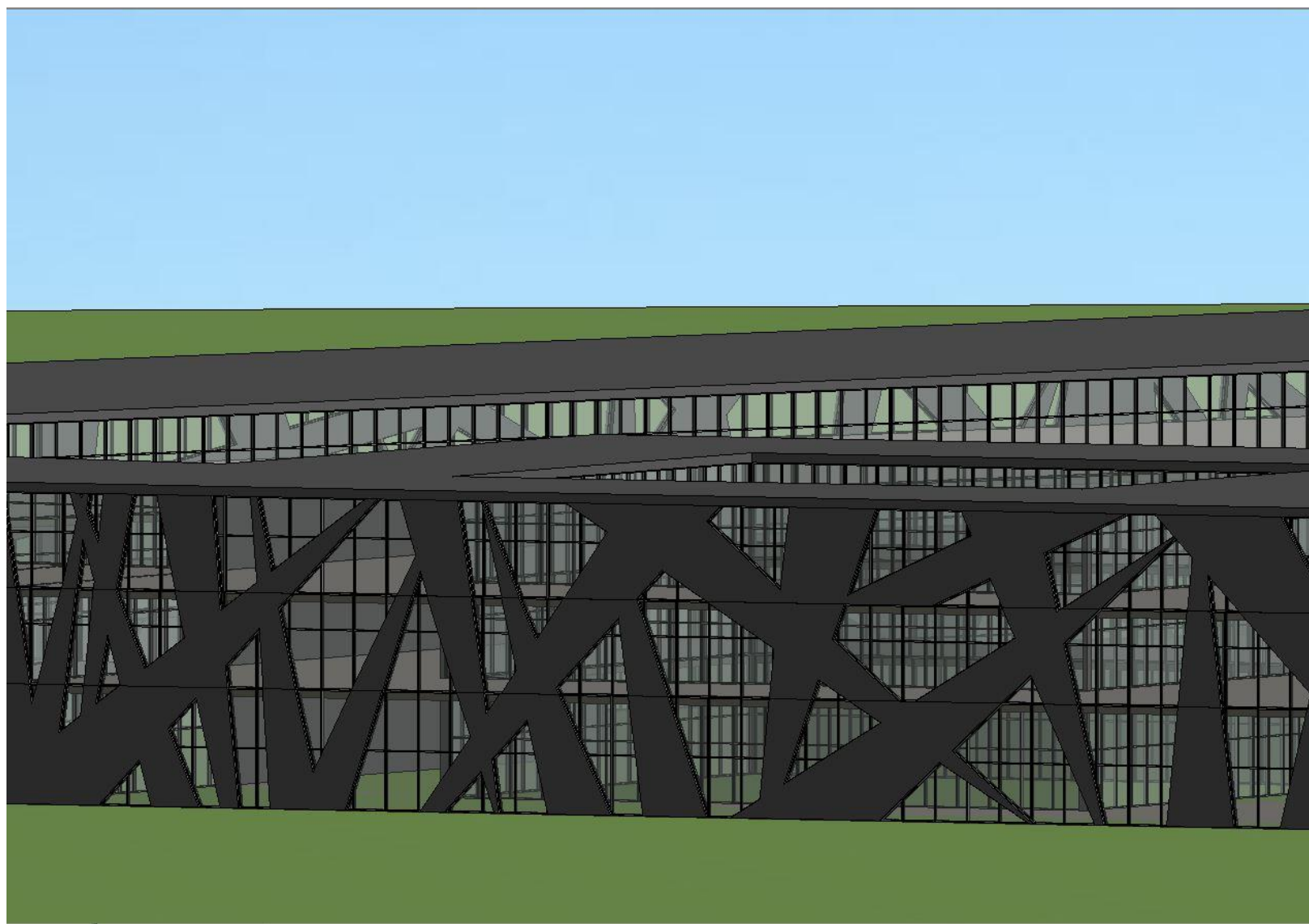


BUS ROUTE

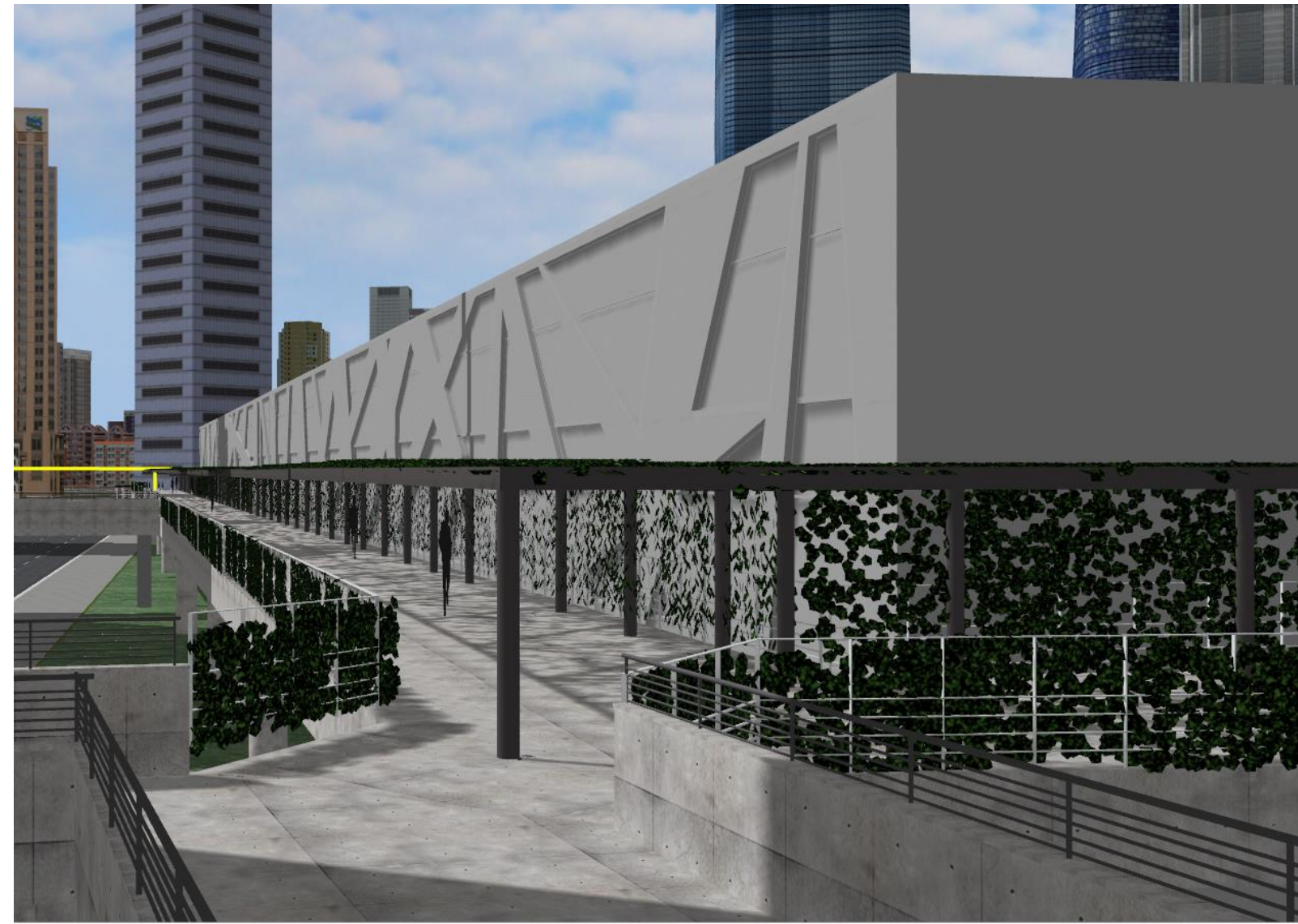
There are two routes of the bus. It is a route circling the commercial area (red line) and a route circling the residential area (blue line). Buses circling the commercial area are mainly for tourists, and the bus stations are set up near representative tourist spots. Buses circling the residential area are mainly for local residents, and the bus stations are set up near facilities that local residents often use in daily life such as banks and large shopping malls. Also, the park is the one of a tourist spot and a representative place for local residents by setting the park as departure and arrival point. Therefore, it is a place where tourists and local residents can casually stop by.



PLAN & DESIGN



We planned to establish many passages in the park so that people can freely pass. We especially took note of the connection between the inside and the outside of the building and the access between the building and the waiting room. The shape motif was a bird's nest which irregularly intersects straight lines. The facility has a connected building shape from the bus stations. Also, pedestrian deck for people to enter the facility is set up outside the park. So it is easy to enter it. The appearance is the bird's nest shape. This means that people gather as birds go to bird's nest. There are many stores to try sharing within the facility. For example, books borrowed from the library can be returned within the bus. In order to form a fluid urban space like this, we were conscious of the connection with the outside, the connection with the bus, and convenience.



SHARED BUS & BUS STATION



The buses incorporate elements of amusement such as library, karaoke and planetarium and meal such as car sales and convenience Store into the function of transportation. This approach creates a space where people can enjoy while riding and want to get on.

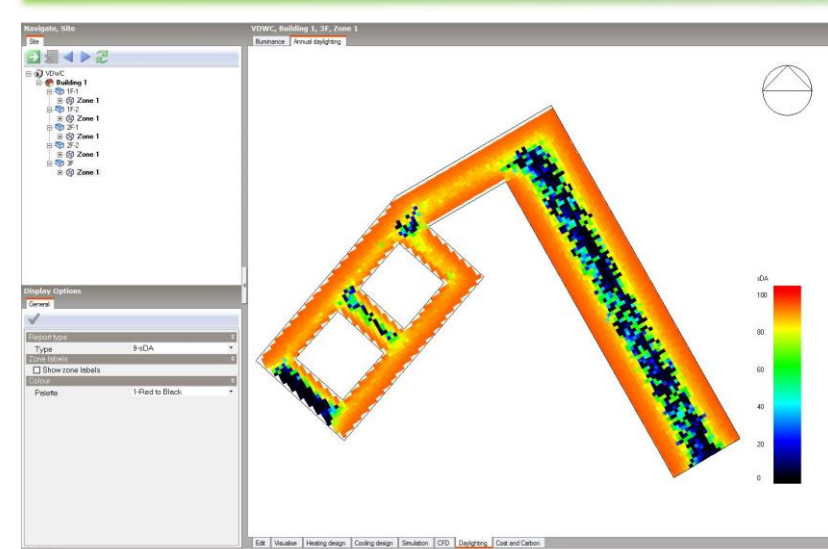
Signage is set up to inform people about bus operation information and disaster information. Also, signage supplies electricity from photovoltaic power generation system.

WAITING ROOM

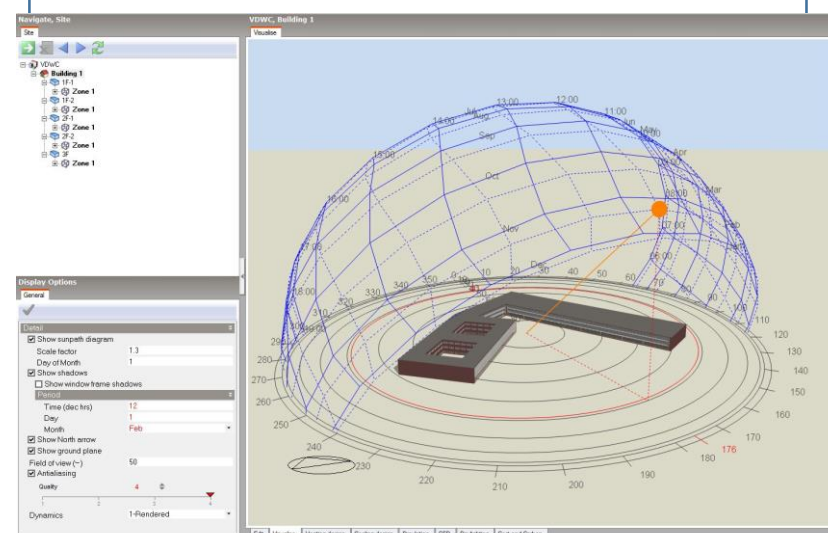


Waiting room is installed along the bus roundabout. In order to make it a comfortable space while waiting for a bus, footbath is installed in a semi-outdoor building. In addition, a solar panel is installed on the roof of the building and supplies electricity to the electric station of the bus.

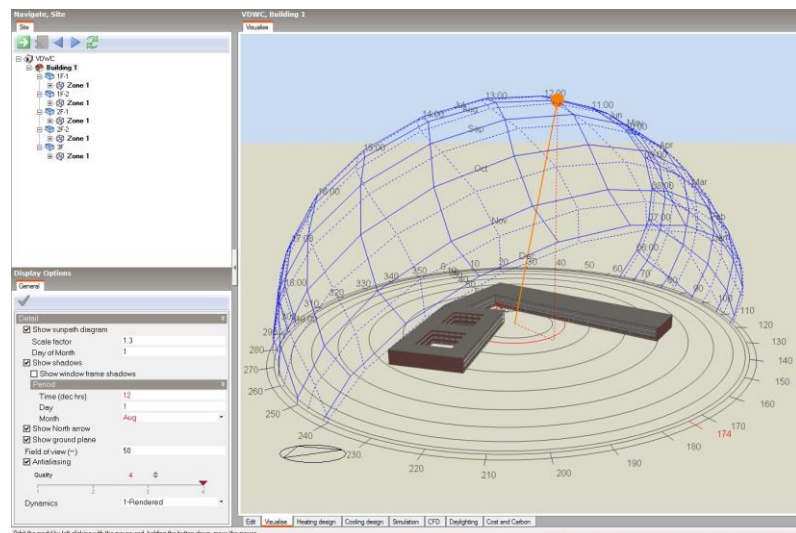
ENVIRONMENTAL ANALYSIS



DesignBuilder is applied to simulate and resolve the problem about energy-conscious technology. The application includes the sunlight factors and illuminance. The optimum position and the building shape have been decided from the sun altitude. Also, using a curtain wall made it possible to increase the illuminance.



1st of February at 12a.m.



1st of August at 12a.m.

DISASTER PREVENTION



Helicopter plays a major role in rescue activities, firefighting activities and transportation of goods when transportation on land is disrupted due to the earthquake disaster. A heliport space is set in the park. That is usually used as a plaza, and it becomes a heliport in case of emergency.



In the event of a disaster, the lid of the manhole is removed and the toilet can be attached



This is a bench which combines the function of a oven used for cooking under the seating surface.