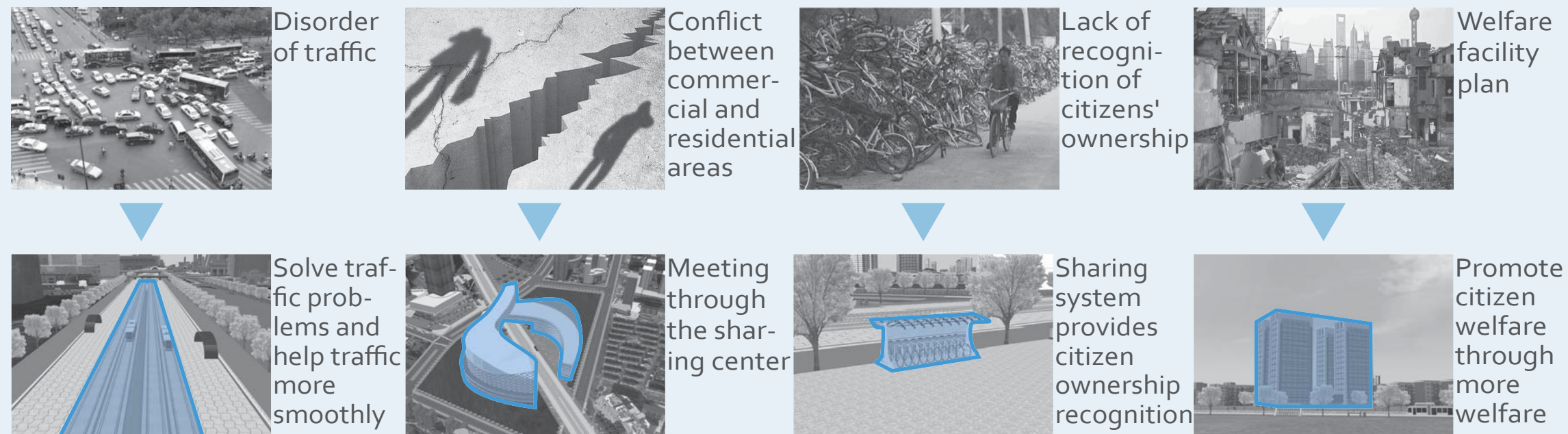


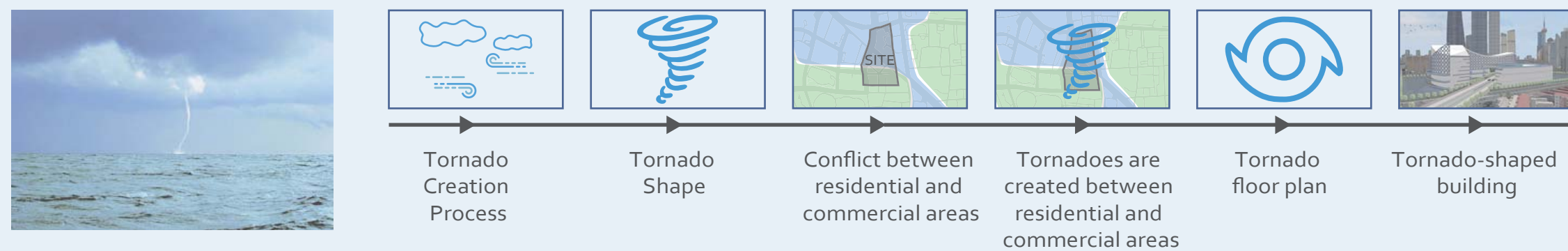
Prologue

Pudong is the center of trade and finance and the future of China. We have planned a sharing center, a waterway, and a platform for a shared city system, which means not only a shared program but a city system that can be shared throughout the city. Considering this meaning, we planned the future Pudong which applied the shared system to the whole city.

Problem and Solution

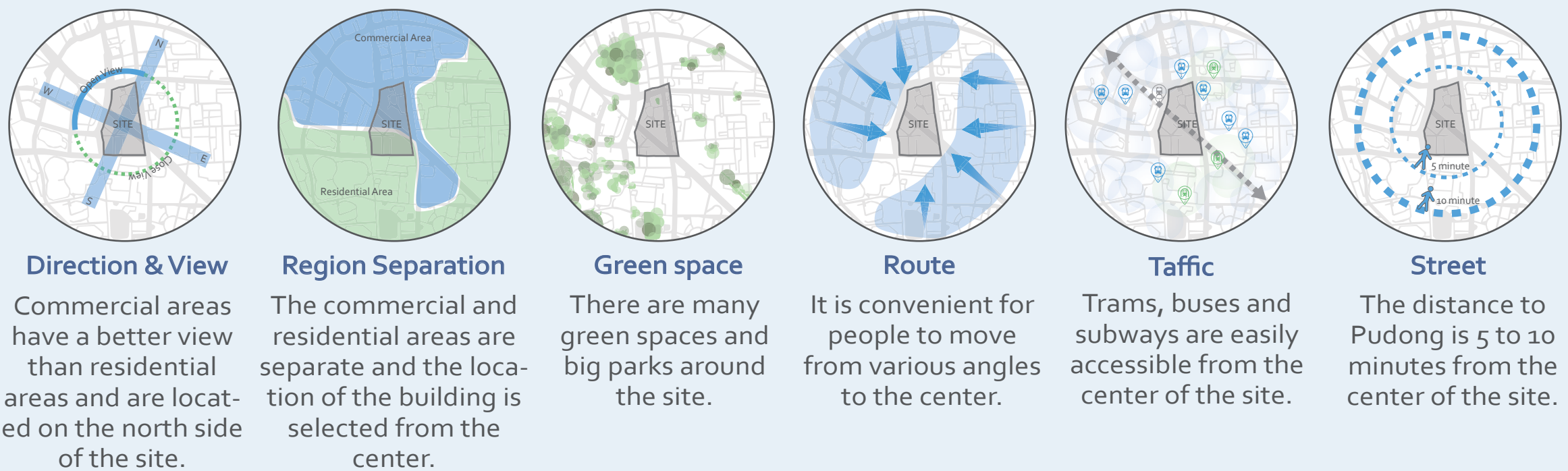


Concept

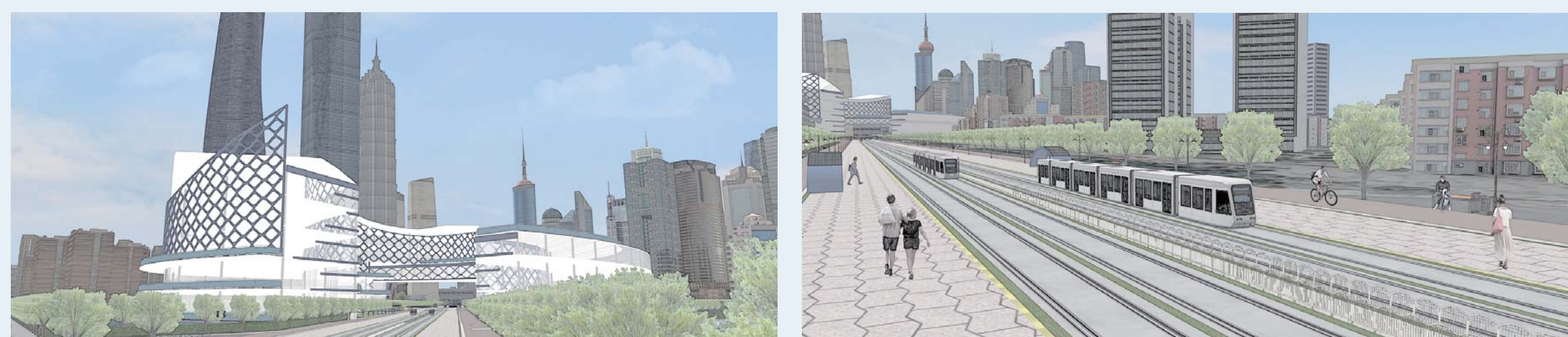


We have created the concept of tornadoes. Tornadoes represent airflow phenomena (building) that cause winds to flow in the vicinity of the surface (residential area) and winds to blow in relatively high air (commercial areas).

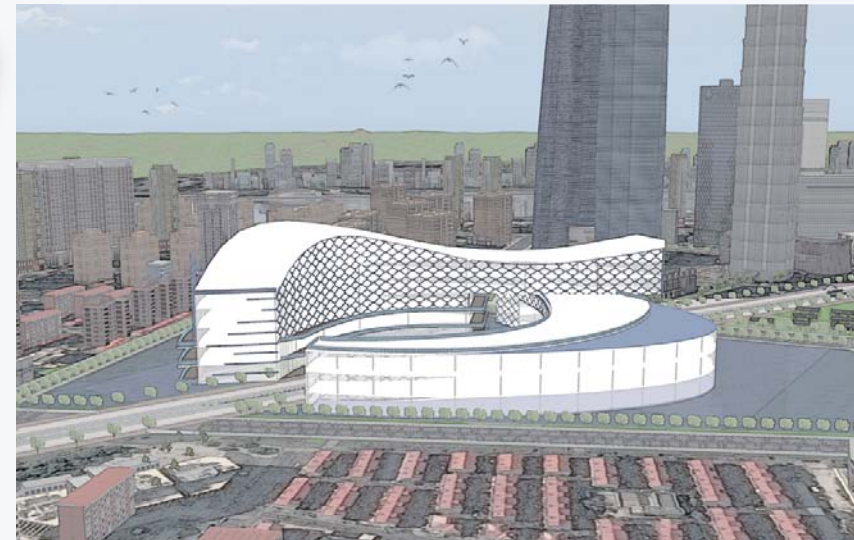
Site analysis



Perspective



Master Plan



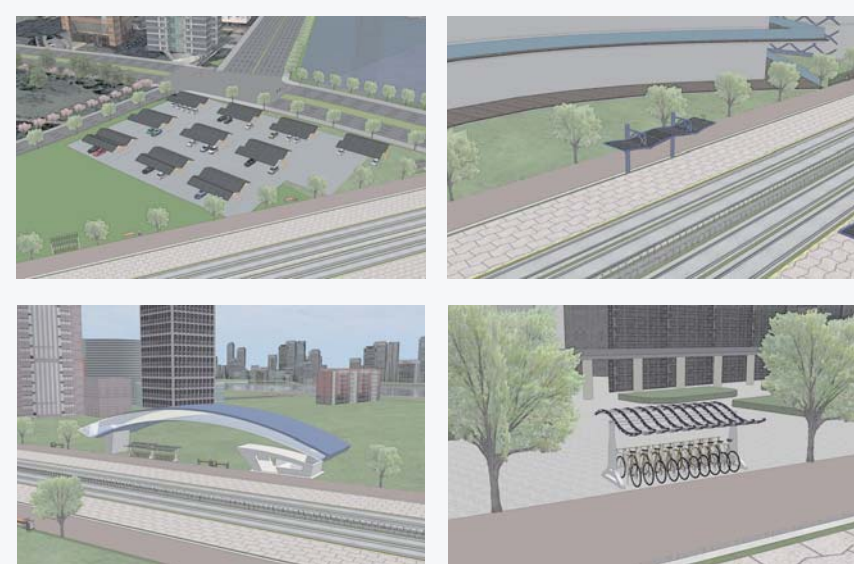
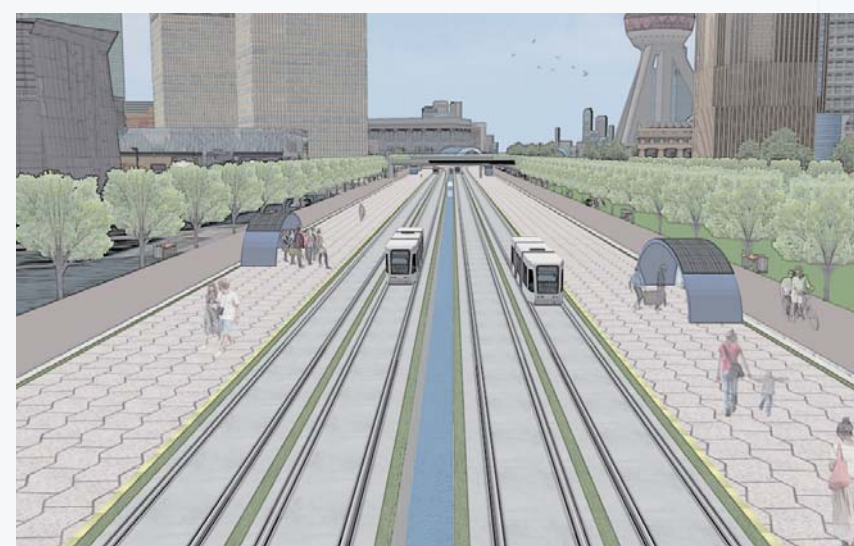
Sharing Center

A tornado-shaped shared center was planned to be the center of commercial and residential areas. Although the shared center functions, it also manages and supplements the shared system. It can be easily used by planning a resting place and also serve as a resting place. The building was divided into two groups, and one planned a shared office and a shared house. The other group planned to be able to rent shared goods.

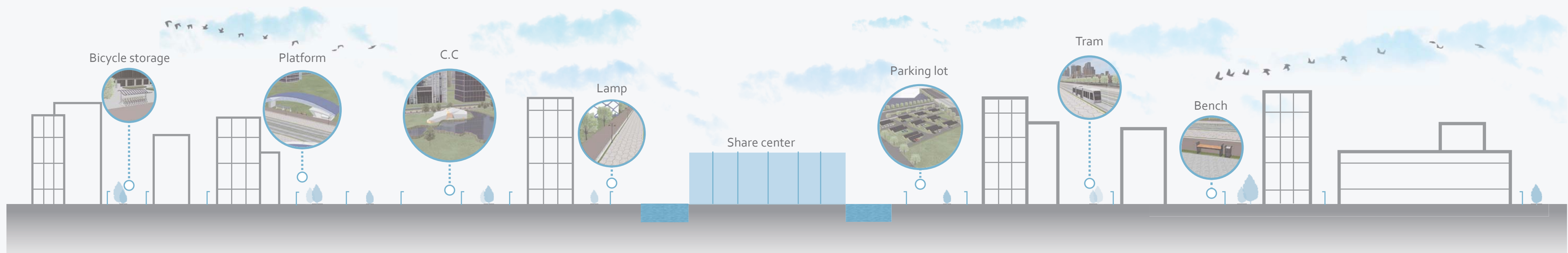


Welfare Center

Adding welfare centers for hospitals, senior citizens, disabled people and children will help ensure more welfare passports for citizens and improve the quality of life for citizens.



Section



Waterway and Tram

By installing a waterway in the center of the main road, various traffic problems are solved and trams are installed on both sides of the waterway to help traffic congestion smoothly. The advantage of the tram is that it is easy to use because it reduces air pollution and has excellent accessibility.



Platform

The platform serves as both a streetcar stop and a platform. It is convenient to visit and move, is readily available to anyone, and helps passengers easily lend and return shared items. It also contributes to the urban power supply by installing solar power on the platform ceiling.

Design builder

