

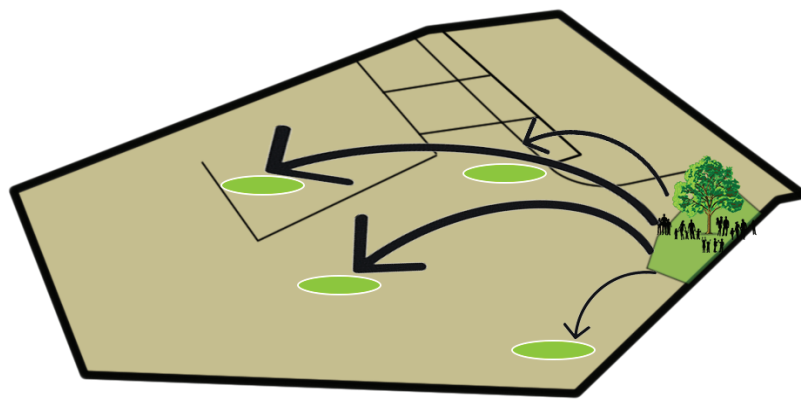
FUTURE AQUA CITY YUMESHIMA

Context

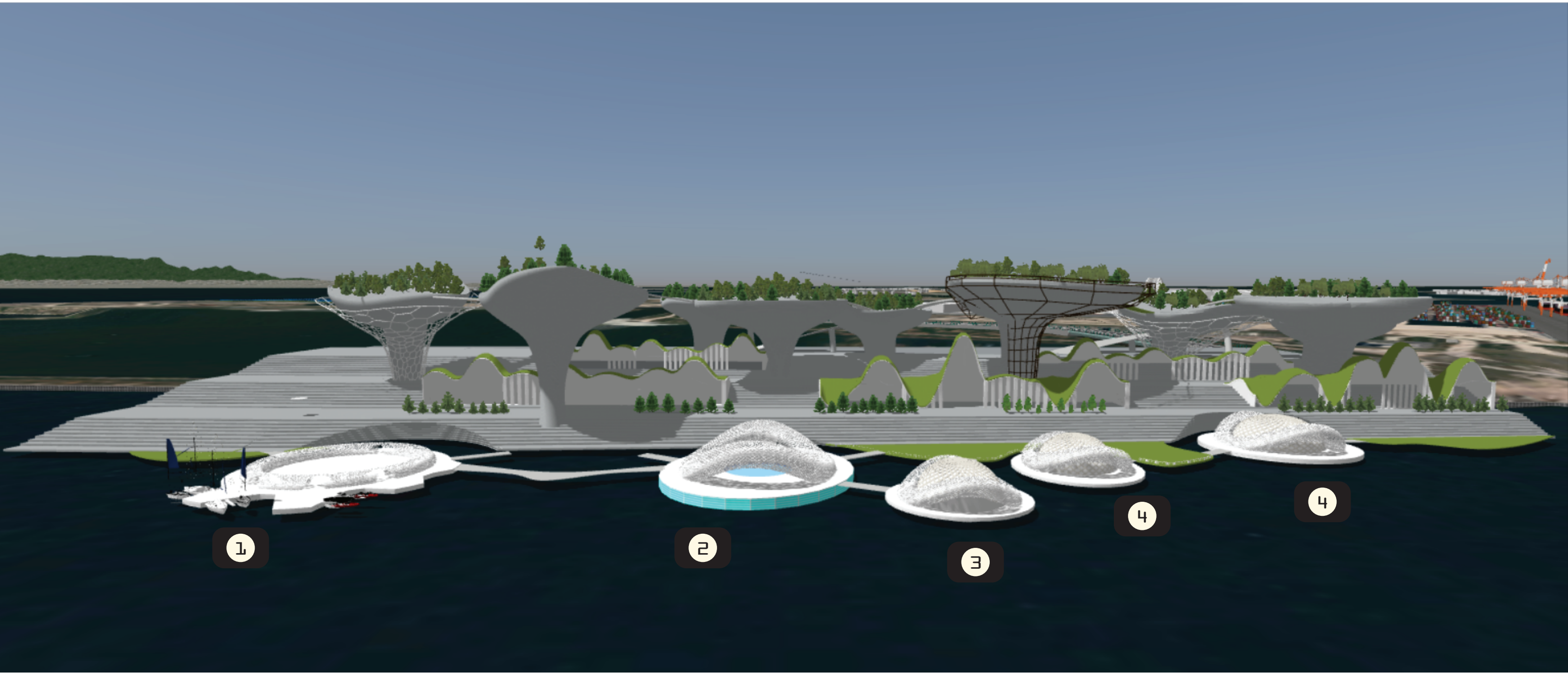


Yumeshima is already in operation on the eastern bank as a container terminal, high-standard logistics hub. Along the western bank is the waste processing site where a substantial “mega solar” power plant is also situated. And in 2025, world expo will be held on this island. Because of these rich resources, this island is developing to futuristic city. Among Reserve 1 and 2, we would like to use Reserve 2 as our site location because it has valuable sea view and easy access from the sea as well as from the Kobe Airports. Then Aqua metropolis osaka can be held along the costal near Reserve 2.

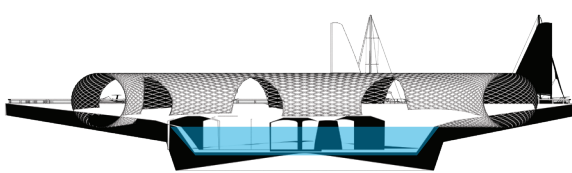
Concept



We would like to make Yumeshima island to develop in a sustainable way. Too much sustainable is boring for the future so we also bring down culture and activities to this island. During making this water frontal design, the concept is to provide sufficient green space since this island is in lack of greeny spaces. We plant the trees along costal for preventing floating and when the trees are grown enough we cut, move and place them on the different places of island.

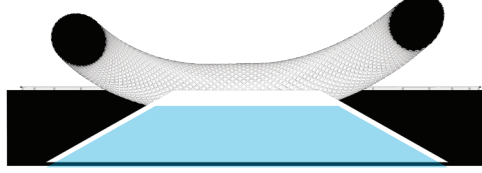


1. Water Sport Zone



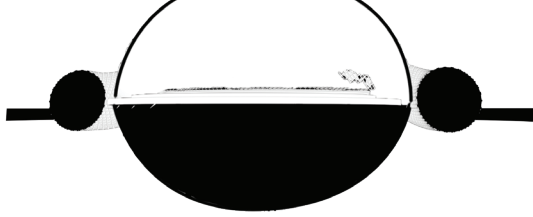
-People can lay down and relax on artificial sand beach within the central core of this pavilion.
-Activities like windsurfing, water polo, swimming, and so many.

2. Scuba diving Activity Zone



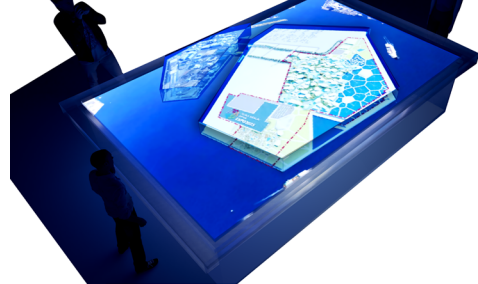
-This floating unit is for diving lovers
-There is preparing diving zone on that top floor and artificial marine life created by human.

3. Water Theater Zone

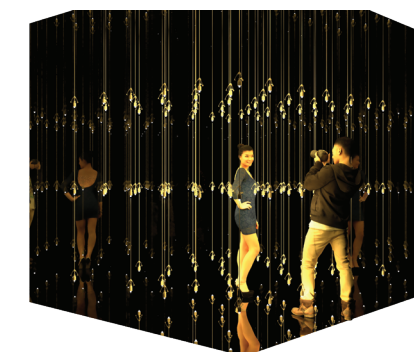


-Visitors can enjoy watching movies at this unit that is floating on water.

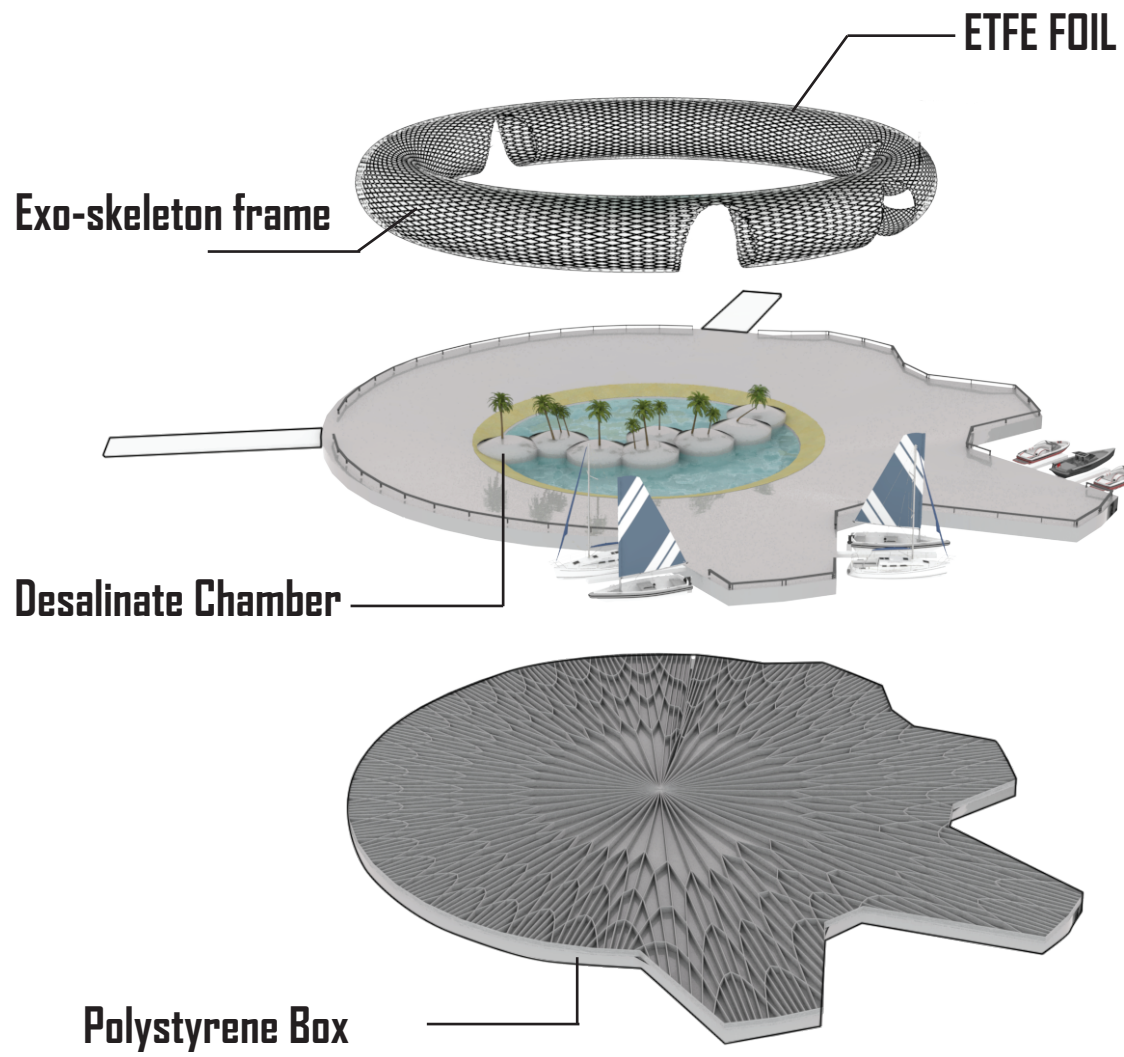
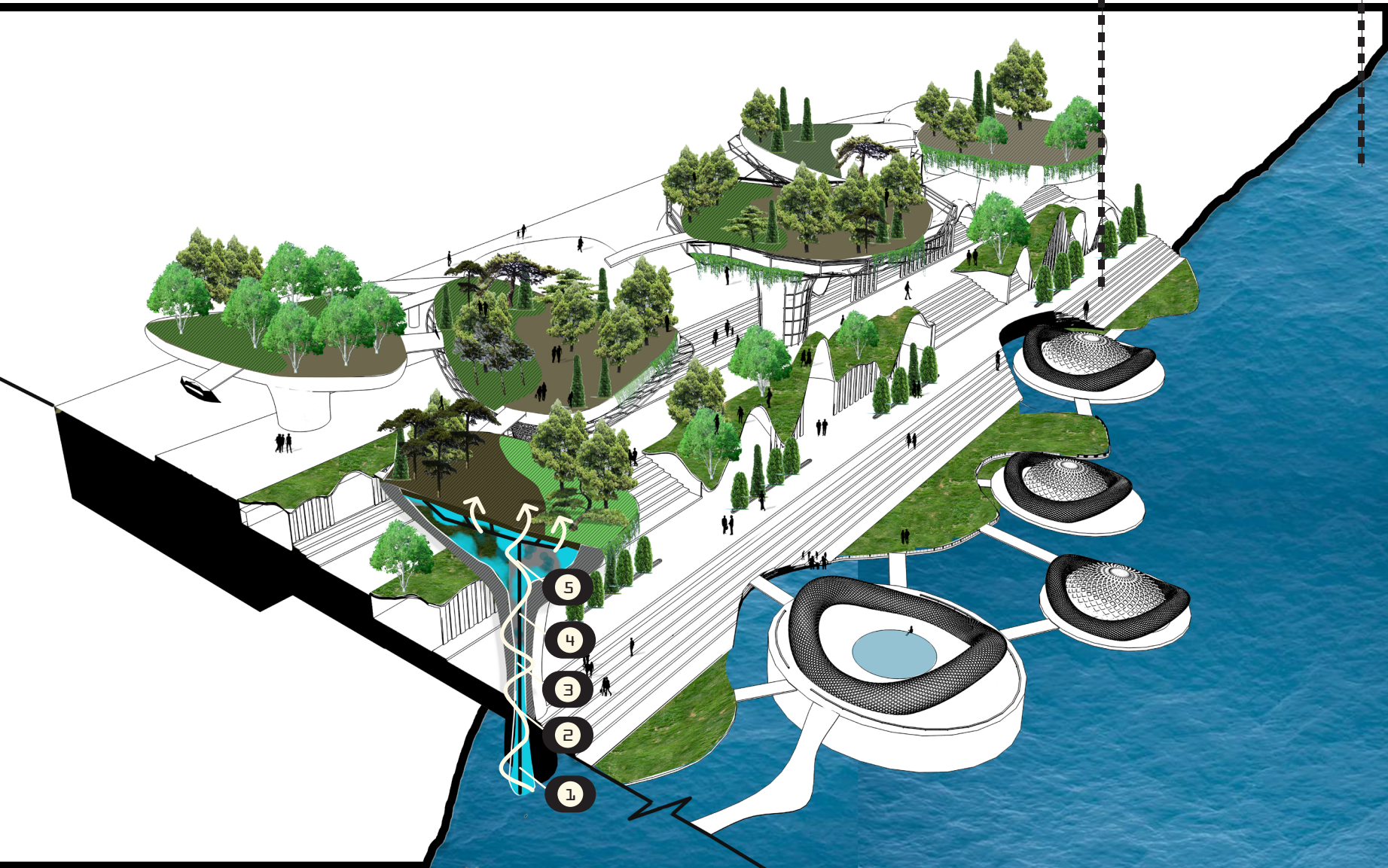
4. Digital Light Forest & Botanic Garden



-Visitors are recommended to come and see the beauty of Yumeshima Island through these digital hologram machines.



-We designed these units to give the different feelings between Digital Light Forest which is futuristic and Botanic Gardens that are giving birth from mother nature.



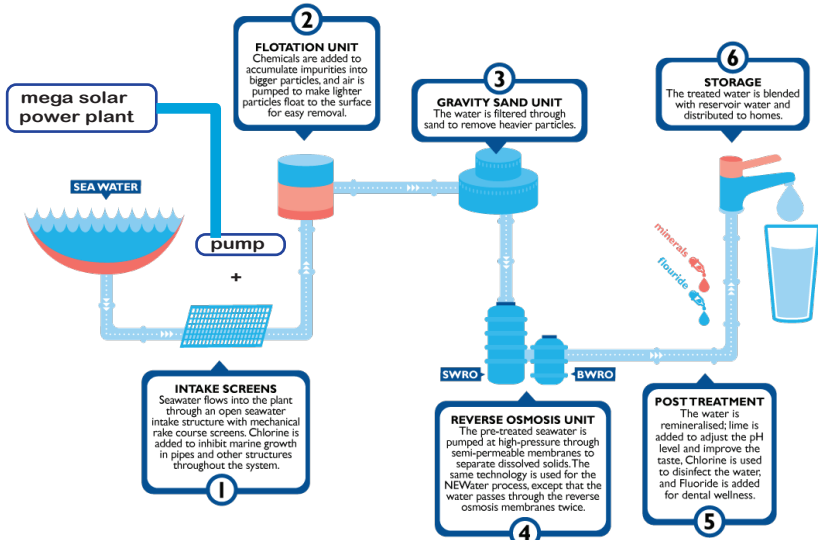
Unit 1



Green park - People can enjoy activities like yoga, picnic and recreational performances.

Sea Side Ciclismo - riding with the fresh breezes of ocean.

Aqua Metropolis Osaka - can enjoy restaurant, cafe and curise with open sea view.



Desalination Process

The Island is still in progress and has no sufficient green spaces. So we will make desalination process along the coastal, and use the existing energy when growing green plants that will be distributed through the Island when they grow up enough. By this mean, the consumers will be supplied sufficient water from the storage tanks that we provided. Then the sea water along the coastal will get purified automatically.

