

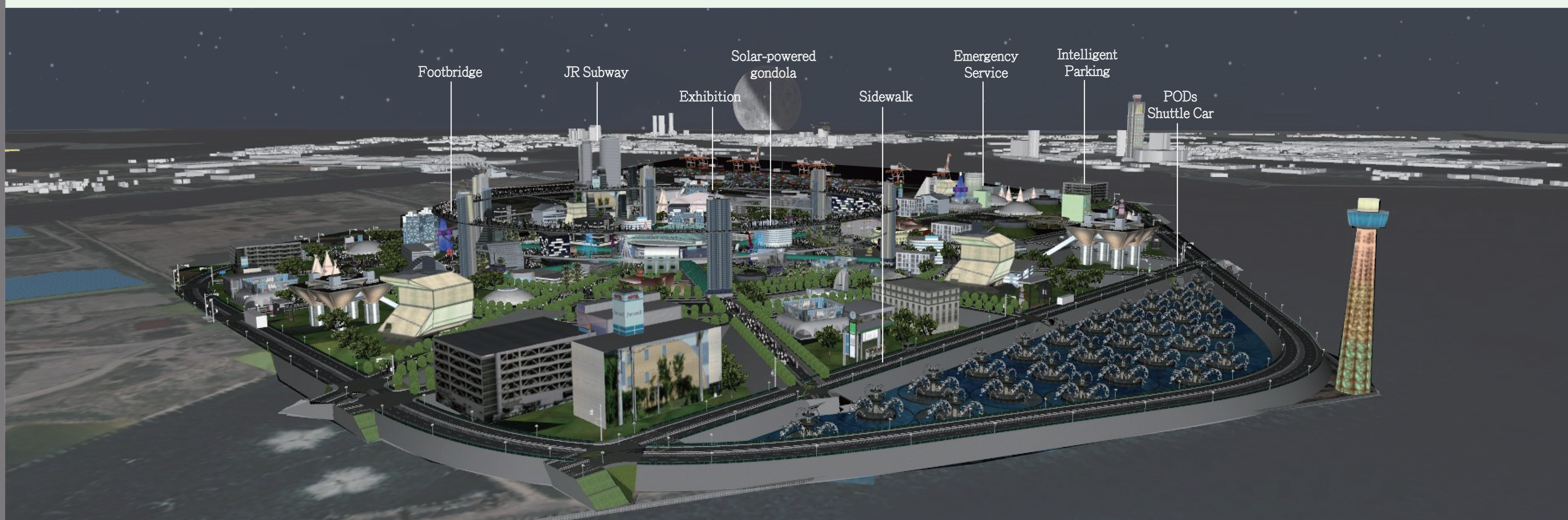
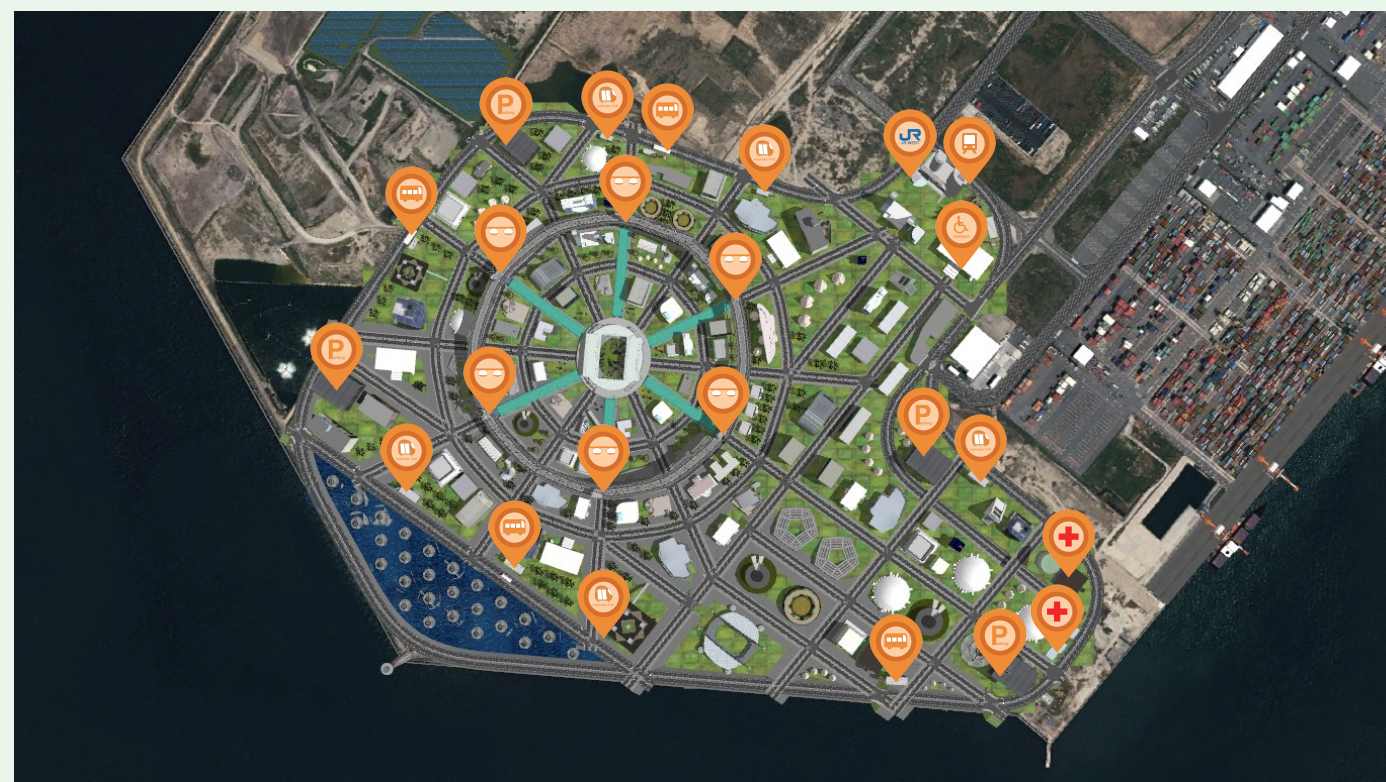


INTRODUCTION

Yumeshima, an artificial island located in Osaka, is the venue of the 2025 Universal Exposition. The Universal Exposition will last for 6 months, and an estimate of 28 million people will participate in the program. Consequently, transportation and e-vacuation are our primary concerns.

Traffic planning

Transportation is designed primarily in the shape of square grid and radiant wreaths. The roundabout transportation system is mainly composed of smart circle, solar energy track and sidewalk so as to boost the utilization of local public transportation. Besides, the construction of underground JR and subway is needed to ease the traffic.



MAIN VISION



In order to build a spatial environment to meet tourists' demand, This plan has a comprehensive setting of seven goals to integrate street design, place-making, innovative policy, and the combination of new and old transportation technologies. We also attempt to merge sustainable development and 5G intellectual together, creating a bold new course for urban mobility.

APP - OKASA EXPO

The application "Osaka EXPO" provides 2025 Universal Exposition informations, including exhibition reservations, transportation information, emergency medical service and etc., offering visitors more convenience in the exposition.



Via the APP



Solar-Powered Gondola



PODs



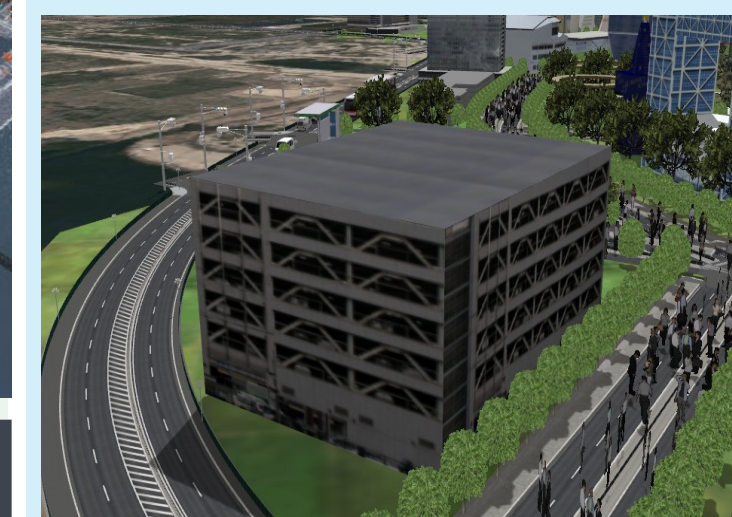
Automated Shuttle Car



JR



Subway



Intelligent parking Lot



Intelligent Wheel Chair



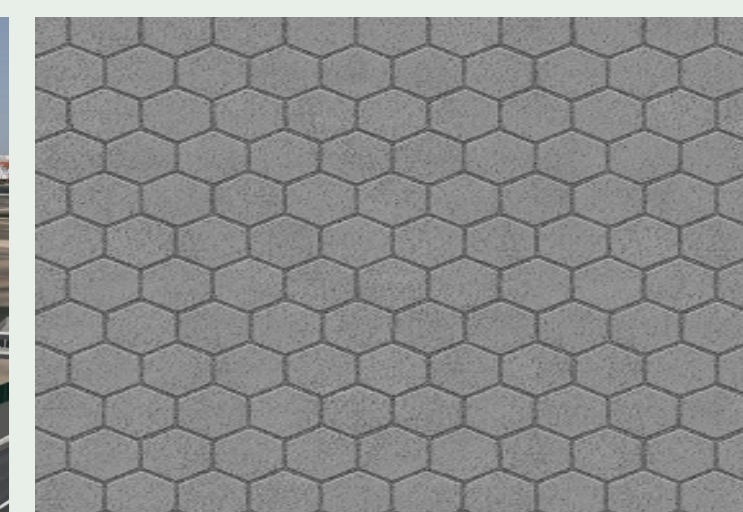
Emergency Medical Service

Key Innovations

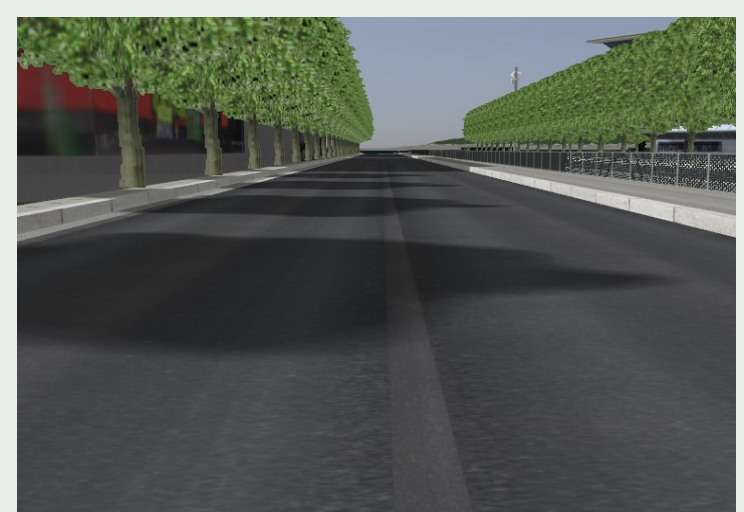
These plans propose an array of digital, wisdom, and innovative technology for 2025 EXPO, with the ultimate goal of "Future Society for Our Lives".



Innovation Traffic Signals



Innovation Modular Pavement



Carousel street