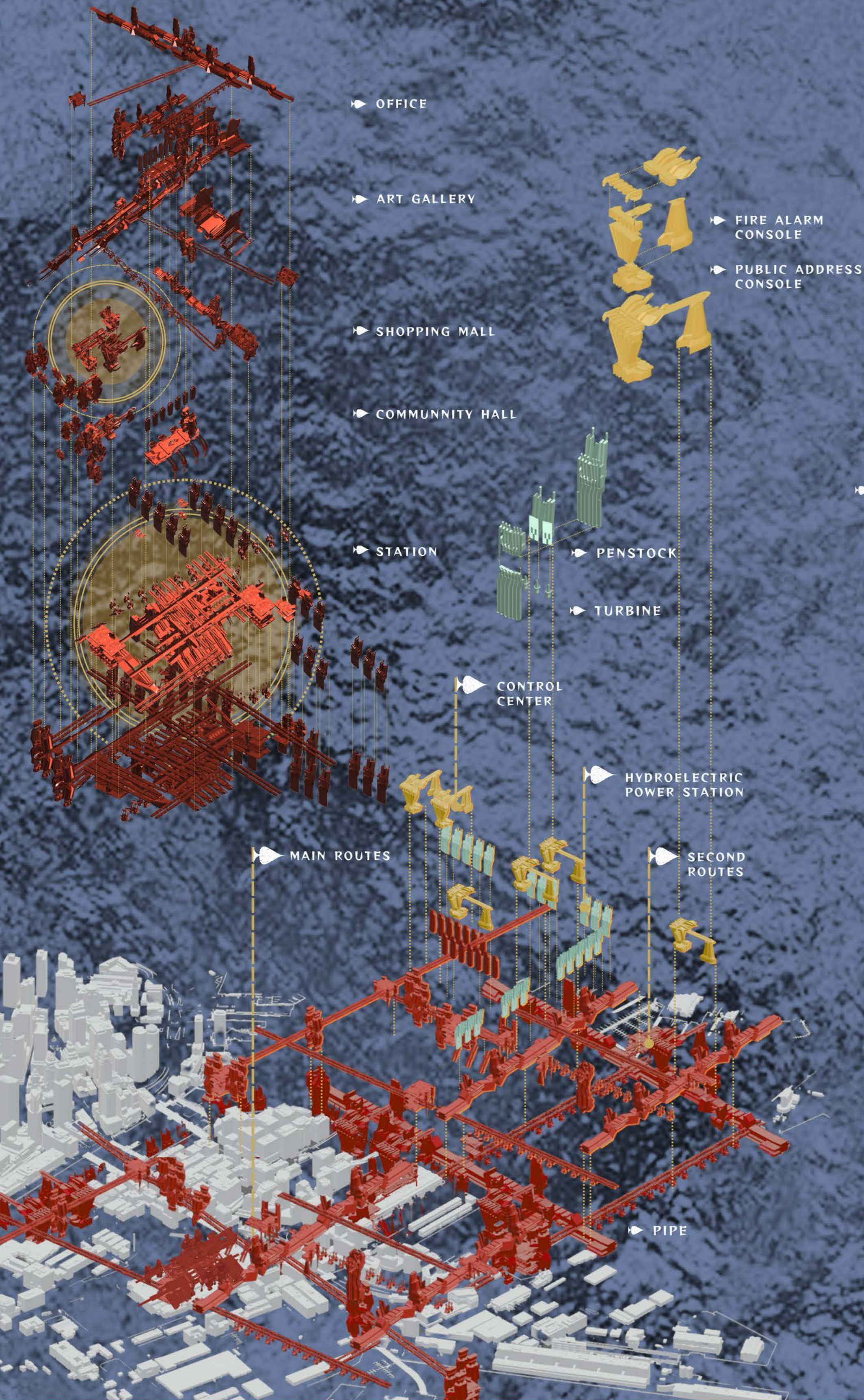
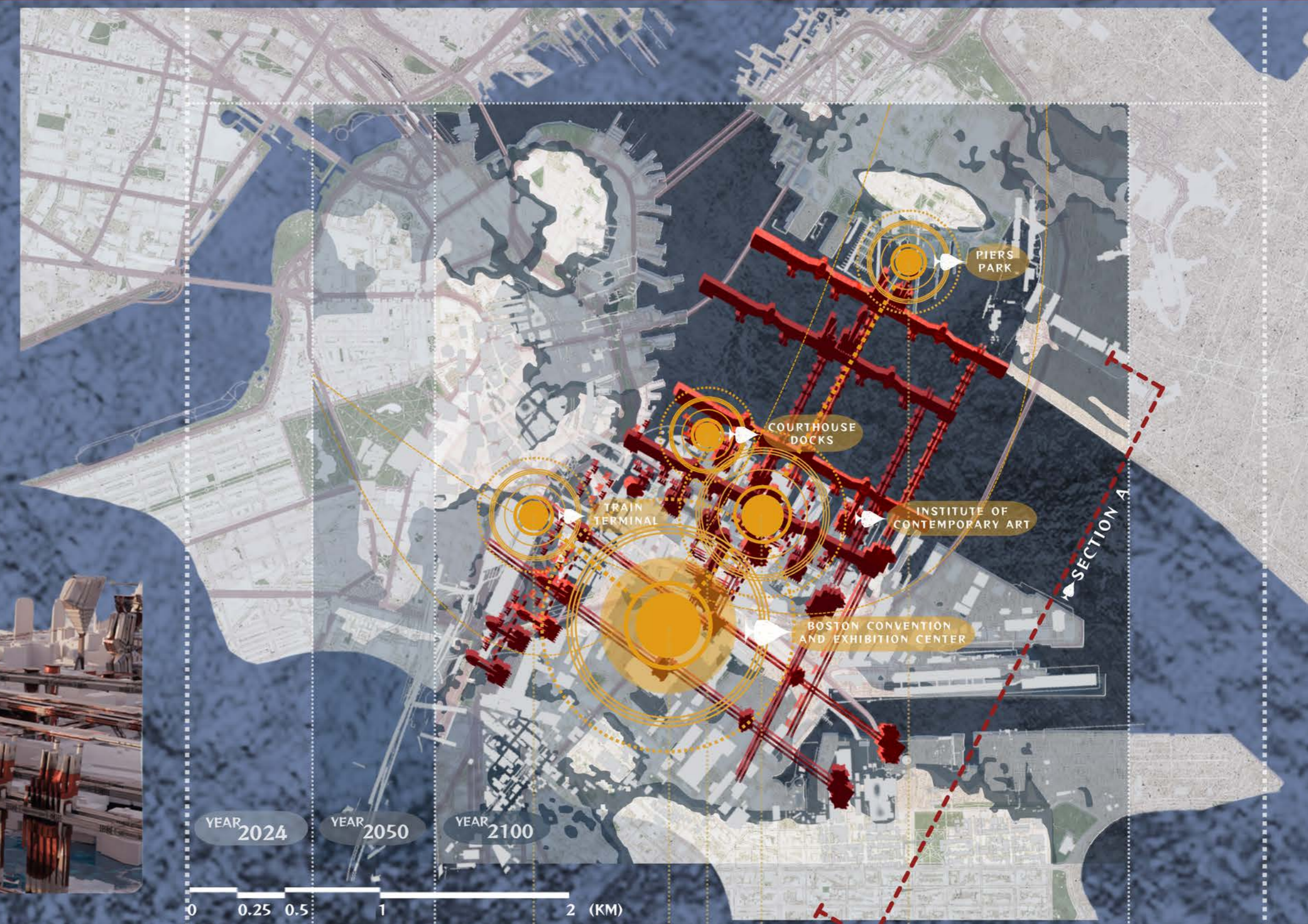


SPADES

MINATOTOWN

SPADE PORT TOWN ♠

Our design prioritizes climate change adaptation strategies through the "SPADES" system, which is a multilayered bridge structure between individuals and small autonomous robots (NHAs). It includes flood mitigation and integrates advanced energy systems to bolster self-reliance, landscapes, and sustainability within this community. In addition, based on the original model, we combined the use of UC-win/Road VR and AI to simulate the urban fabric of the future city. Therefore, with efforts, we establish a resilient urban blueprint for the future.



SEA LEVEL -- FLOODING PROBLEM

The causes of Boston's sea level rise are land subsidence, warming waters, and glacial melting. The complex phenomenon of sea level rise in Boston is driven by multiple factors. The map on the right side shows the projections in Boston: Light blue indicates flooding from a major storm in 2050, while dark blue represents flooding in 2100."

SECTION A

